

Product datasheet

Recombinant Human B7H4 protein (Biotin) ab198650

1 Image

Description

Product name	Recombinant Human B7H4 protein (Biotin)	
Purity	> 90 % SDS-PAGE.	
Endotoxin level	< 1.000 Eu/μg	
Expression system	HEK 293 cells	
Accession	Q7K480	
Protein length	Protein fragment	
Animal free	No	
Nature	Recombinant	
Species	Human	
Sequence	FGISGRHSITVTTVASAGNIGEDGILSCTFEPDIKLSDIVIQW LKEGVLG LVHEFKEGKDELSEQDEMFRGRTAVFADQVMGNASRLR KNVQLTDAGTY KCYIITSKGKGNANLEYKTGAFSMPEVNVVDYNASSETLRC EAPRWFPPQT VVWASQVDQGANFSEVSNTSFELNSENVTMKVVSVLYN VTINNTYSCMIE NDIAKATGDIKVTSEIKRRSHLQLLNSKAHHHHHHHHHHHG GGLNDIFEAKKIEWHE	
Predicted molecular weight	29 kDa including tags	
Amino acids	29 to 258	
Tags	His tag C-Terminus , Avi tag C-Terminus	
Additional sequence information	C-terminal biotin label was added using Avi-tag™ technology.	
Conjugation	Biotin	

Specifications

Our [Abpromise guarantee](#) covers the use of **ab198650** in the following tested applications.

The application notes include recommended starting dilutions; optimal dilutions/concentrations should be determined by the end user.

Applications SDS-PAGE

Form Liquid

Preparation and Storage

Stability and Storage

Shipped on Dry Ice. Store at -80°C. Avoid freeze / thaw cycle.

pH: 8.00

Constituents: 0.48% Tris, 0.64% Sodium chloride, 0.02% Potassium chloride, 20% Glycerol

General Info

Function

Negatively regulates T-cell-mediated immune response by inhibiting T-cell activation, proliferation, cytokine production and development of cytotoxicity. When expressed on the cell surface of tumor macrophages, plays an important role, together with regulatory T-cells (Treg), in the suppression of tumor-associated antigen-specific T-cell immunity. Involved in promoting epithelial cell transformation.

Tissue specificity

Overexpressed in breast, ovarian, endometrial, renal cell (RCC) and non-small-cell lung cancers (NSCLC). Expressed on activated T- and B-cells, monocytes and dendritic cells, but not expressed in most normal tissues (at protein level). Widely expressed, including in kidney, liver, lung, ovary, placenta, spleen and testis.

Sequence similarities

Belongs to the immunoglobulin superfamily. BTN/MOG family.

Contains 2 Ig-like V-type (immunoglobulin-like) domains.

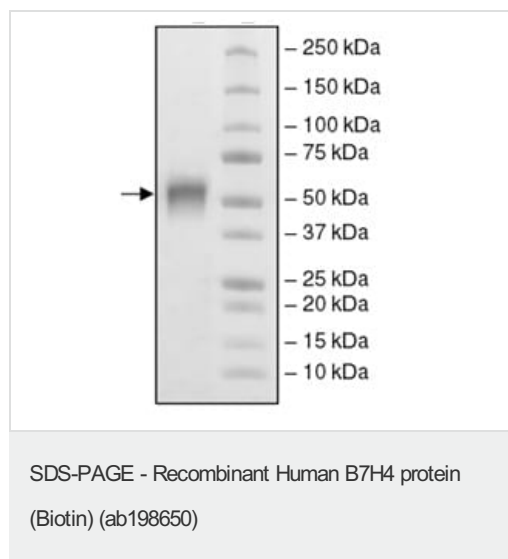
Post-translational modifications

N-glycosylated.

Cellular localization

Cell membrane. Expressed at the cell surface. A soluble form has also been detected.

Images



4-20% SDS Page analysis of ab198650 (2.8 µg)

Please note: All products are "FOR RESEARCH USE ONLY. NOT FOR USE IN DIAGNOSTIC PROCEDURES"

Our Abpromise to you: Quality guaranteed and expert technical support

- Replacement or refund for products not performing as stated on the datasheet
- Valid for 12 months from date of delivery
- Response to your inquiry within 24 hours

- We provide support in Chinese, English, French, German, Japanese and Spanish
- Extensive multi-media technical resources to help you
- We investigate all quality concerns to ensure our products perform to the highest standards

If the product does not perform as described on this datasheet, we will offer a refund or replacement. For full details of the Abpromise, please visit <https://www.abcam.com/abpromise> or contact our technical team.

Terms and conditions

- Guarantee only valid for products bought direct from Abcam or one of our authorized distributors