

Product datasheet

Recombinant Human BASP1 protein ab140056

1 Image

Overview

Product name	Recombinant Human BASP1 protein
Protein length	Full length protein

Description

Nature	Recombinant
Source	Escherichia coli
Amino Acid Sequence	
Accession	P80723
Species	Human

Sequence	<p>MGSSHHHHHH SSGLVPRGSH MGSMGGKLSK KKKGYNVNDE KAKEKDKKAE GAATEEEGTP KESEPQAAAE PAEAKEGKEK PDQDAEGKAE EKEGEKDAAA AKEEAPKAEP EKTEGAAEAK AEPPKAPEQE QAAPGPAAGG EAPKAAEAAA APAESAAPAA GEEPSKEEGE PKKTEAPAAP AAQETKSDGA PASDSKPGSS EAAPSSKETP AATEAPSSTP KAQGPAASAE EPKPVEAPAA NSDQTVTVKE</p>
-----------------	---------------------------------------------------------------------------------------------------------------------------------------------------------------------------------------------------------------------------------------------------------------------------------------------------------------------------------------------------------------------------------------------------

Molecular weight	25 kDa including tags
Amino acids	1 to 227
Tags	His tag N-Terminus

Specifications

Our [Abpromise guarantee](#) covers the use of **ab140056** in the following tested applications.

The application notes include recommended starting dilutions; optimal dilutions/concentrations should be determined by the end user.

Applications	SDS-PAGE
	Mass Spectrometry

Mass spectrometry	MALDI-TOF
--------------------------	-----------

Purity	> 95 % SDS-PAGE. ab140056 was purified by using conventional chromatography techniques.
---------------	--------------------------------------------------------------------------------------------

Form Liquid

Preparation and Storage

Stability and Storage Shipped at 4°C. Store at +4°C short term (1-2 weeks). Upon delivery aliquot. Store at -20°C or -80°C. Avoid freeze / thaw cycle.

pH: 8.00

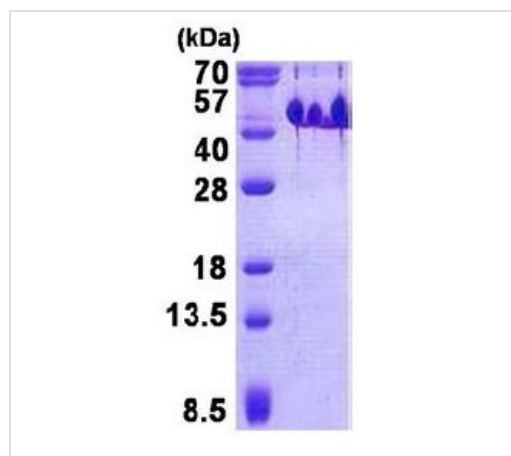
Constituents: 0.32% Tris HCl, 20% Glycerol, 1.17% Sodium chloride

General Info

Relevance BASP1 is a brain abundant membrane bound protein with several transient phosphorylation sites and PEST motifs. BASP1 binds calmodulin, is phosphorylated by protein kinase C and undergoes N-terminal myristoylation. BASP1 is expressed specifically in nervous tissue. Intercellular signaling and nerve outgrowth are influenced by a number of proteins expressed at nerve endings and synapses of which BASP1 is one.

Cellular localization Cell membrane; Lipid-anchor. Cell projection; growth cone. Note: Associated with the membranes of growth cones that form the tips of elongating axons.

Images



15% SDS-PAGE analysis of ab140056 (3µg).

SDS-PAGE - Recombinant Human BASP1 protein
(ab140056)

Please note: All products are "FOR RESEARCH USE ONLY. NOT FOR USE IN DIAGNOSTIC PROCEDURES"

Our Abpromise to you: Quality guaranteed and expert technical support

- Replacement or refund for products not performing as stated on the datasheet
- Valid for 12 months from date of delivery
- Response to your inquiry within 24 hours

- We provide support in Chinese, English, French, German, Japanese and Spanish
- Extensive multi-media technical resources to help you
- We investigate all quality concerns to ensure our products perform to the highest standards

If the product does not perform as described on this datasheet, we will offer a refund or replacement. For full details of the Abpromise, please visit <https://www.abcam.com/abpromise> or contact our technical team.

Terms and conditions

- Guarantee only valid for products bought direct from Abcam or one of our authorized distributors