

Product datasheet

Recombinant Human Bcl 7A protein ab139229

1 Image

Description

Product name	Recombinant Human Bcl 7A protein	
Purity	> 85 % SDS-PAGE. ab139229 is purified using conventional chromatography techniques.	
Expression system	Escherichia coli	
Accession	Q4VC05	
Protein length	Full length protein	
Animal free	No	
Nature	Recombinant	
Species	Human	
Sequence	MGSSHHHHHSSGLVPRGSHMGSMGRSVRAETRSRAK DDIKRVMAAIEK VRKWEKKWVTVGDTSLRIYKWVPVTEPKVDDKNKNNKKK GKDEKCGSEVTT PENSSSPGMMDMHDDNSNQSSIADASPIKQENSSNSSP APEPNSAVPSDG TEAKVDEAQADGKEHPGAEDASDEQNSQSSMEHSMNS SEKVDRQPSGDSG LAAETSAISQDLEGVPPSKMKLEASQQNSEEM	
Predicted molecular weight	25 kDa including tags	
Amino acids	1 to 210	
Tags	His tag N-Terminus	

Specifications

Our [Abpromise guarantee](#) covers the use of **ab139229** in the following tested applications.

The application notes include recommended starting dilutions; optimal dilutions/concentrations should be determined by the end user.

Applications	SDS-PAGE Mass Spectrometry
Mass spectrometry	MALDI-TOF
Form	Liquid

Preparation and Storage

Stability and Storage

Shipped at 4°C. Store at +4°C short term (1-2 weeks). Upon delivery aliquot. Store at -20°C or -80°C. Avoid freeze / thaw cycle.

pH: 8.00

Constituents: 0.02% DTT, 0.32% Tris HCl, 0.06% EDTA, 10% Glycerol, 0.88% Sodium chloride

General Info

Involvement in disease

Note=Chromosomal aberrations involving BCL7A may be a cause of B-cell non-Hodgkin lymphoma. Three-way translocation t(8;14;12)(q24.1;q32.3;q24.1) with MYC and with immunoglobulin gene regions.

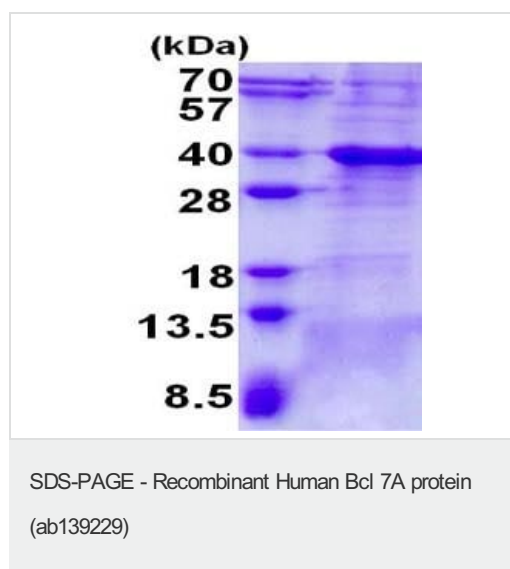
Sequence similarities

Belongs to the BCL7 family.

Post-translational modifications

Phosphorylated upon DNA damage, probably by ATM or ATR.

Images



15% SDS-PAGE analysis of 3 µg ab139229.

Please note: All products are "FOR RESEARCH USE ONLY. NOT FOR USE IN DIAGNOSTIC PROCEDURES"

Our Abpromise to you: Quality guaranteed and expert technical support

- Replacement or refund for products not performing as stated on the datasheet
- Valid for 12 months from date of delivery
- Response to your inquiry within 24 hours
- We provide support in Chinese, English, French, German, Japanese and Spanish
- Extensive multi-media technical resources to help you
- We investigate all quality concerns to ensure our products perform to the highest standards

If the product does not perform as described on this datasheet, we will offer a refund or replacement. For full details of the Abpromise,

please visit <https://www.abcam.com/abpromise> or contact our technical team.

Terms and conditions

- Guarantee only valid for products bought direct from Abcam or one of our authorized distributors