

Product datasheet

Recombinant Human Beta crystallin S protein
ab111642

1 Image

Description

Product name	Recombinant Human Beta crystallin S protein
Purity	> 95 % SDS-PAGE. ab111642 is purified using conventional chromatography.
Expression system	Escherichia coli
Accession	P22914
Protein length	Full length protein
Animal free	No
Nature	Recombinant
Species	Human
Sequence	MGSSHHHHHSSGLVPRGSHMGSHMSKTGKITYEDK NFQGRRYDCDCD CADFHTYLSRCNSIKVEGGTWAVYERPINFAGYMYLPQGE YPEYQRWMGL NDRLSSCRAVHLPSGGQYKIQIFEKGFSGQMYETTEDCP SIMEQFHMRE IHSCKVLEGVWIFYELPNYRGRQYLLDKKEYRKPIDWGAAS PAVQSFRRIVE
Predicted molecular weight	24 kDa including tags
Amino acids	1 to 178
Tags	His tag N-Terminus

Specifications

Our [Abpromise guarantee](#) covers the use of **ab111642** in the following tested applications.

The application notes include recommended starting dilutions; optimal dilutions/concentrations should be determined by the end user.

Applications	SDS-PAGE Mass Spectrometry
Mass spectrometry	MALDI-TOF
Form	Liquid

Preparation and Storage

Stability and Storage

Shipped at 4°C. Store at +4°C short term (1-2 weeks). Upon delivery aliquot. Store at -20°C or -80°C. Avoid freeze / thaw cycle.

pH: 8.00

Constituents: 0.02% DTT, 10% Glycerol (glycerin, glycerine), 0.58% Sodium chloride

Contains 89% Tris-HCl buffer.

General Info

Function

Crystallins are the dominant structural components of the vertebrate eye lens.

Sequence similarities

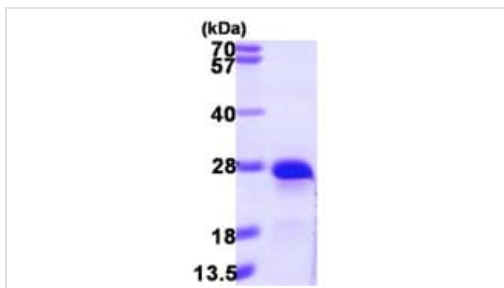
Belongs to the beta/gamma-crystallin family.

Contains 4 beta/gamma crystallin 'Greek key' domains.

Domain

Has a two-domain beta-structure, folded into four very similar Greek key motifs.

Images



15% SDS-PAGE analysis of ab111642 (3 µg)

SDS-PAGE - Recombinant Human Beta crystallin S protein (ab111642)

Please note: All products are "FOR RESEARCH USE ONLY. NOT FOR USE IN DIAGNOSTIC PROCEDURES"

Our Abpromise to you: Quality guaranteed and expert technical support

- Replacement or refund for products not performing as stated on the datasheet
- Valid for 12 months from date of delivery
- Response to your inquiry within 24 hours
- We provide support in Chinese, English, French, German, Japanese and Spanish
- Extensive multi-media technical resources to help you
- We investigate all quality concerns to ensure our products perform to the highest standards

If the product does not perform as described on this datasheet, we will offer a refund or replacement. For full details of the Abpromise, please visit <https://www.abcam.com/abpromise> or contact our technical team.

Terms and conditions

- Guarantee only valid for products bought direct from Abcam or one of our authorized distributors