

Product datasheet

Recombinant Human BLAP75 protein ab153518

1 Image

Overview

Product name	Recombinant Human BLAP75 protein
Protein length	Full length protein

Description

Nature	Recombinant
Source	Wheat germ
Amino Acid Sequence	
Species	Human
Sequence	<p>MNVTSIALRAETWLLAAWHVKVPPMWLEACINWQEE NNNVNLSQAQMNK QVFEQWLLTDLRDLEHPLLPDGILEIPKGELNGFYALQI NSLVDVSQPAH SQQKLRGKNTTNDLVTAEAQVTPKPWEAKPSRMLML QLTGIVQIQGME YQPIILHSDLPPGTKILYGNISFRLGVLLLKPENVKVLG GEVDALLEE YAQEKVLARLIGEPDLVSVIPNNSNENIPRVTDVLDPA LGPSDEELLAS LDENDELTTANNDTSSERCFTTGSSSNTIPTRQSSFEPE FVISPRPKEEPS NLSIHVMDGELDDFSLEEALLLEETVQKEQMETKELQ PLTFNRNADRSIE RFSHNPNTTNNFSLTCKNGNNWSEKNVSEQMTNED KSGCPSVRDQNRS IFSVHCNVPLAHDFTNKEKNLETDNLIKQTSSSDSHSL NNKILIERWSTM YRKGHFKFLMKMIVYRVVL</p>
Amino acids	1 to 470
Tags	GST tag N-Terminus

Specifications

Our [Abpromise guarantee](#) covers the use of **ab153518** in the following tested applications.

The application notes include recommended starting dilutions; optimal dilutions/concentrations should be determined by the end user.

Applications	Western blot ELISA
Form	Liquid
Additional notes	Protein concentration is above or equal to 0.05 mg/ml.

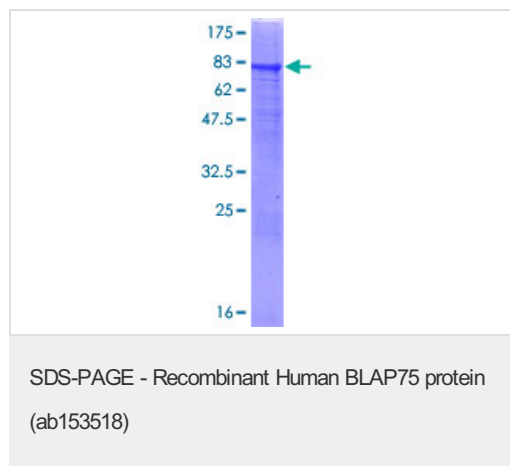
Preparation and Storage

Stability and Storage	Shipped on dry ice. Upon delivery aliquot and store at -80°C. Avoid freeze / thaw cycles. pH: 8.00 Constituents: 0.31% Glutathione, 0.79% Tris HCl
------------------------------	--

General Info

Function	Essential component of the RMI complex, a complex that plays an important role in the processing of homologous recombination intermediates to limit DNA crossover formation in cells. Promotes TOP3A binding to double Holliday junctions (DHJ) and hence stimulates TOP3A-mediated dissolution. Required for BLM phosphorylation during mitosis. Within the BLM complex, required for BLM and TOP3A stability.
Sequence similarities	Belongs to the RMI1 family.
Cellular localization	Nucleus. Forms foci in response to DNA damage.

Images



ab153518 on a 12.5% SDS-PAGE stained with Coomassie Blue.

Please note: All products are "FOR RESEARCH USE ONLY. NOT FOR USE IN DIAGNOSTIC PROCEDURES"

Our Abpromise to you: Quality guaranteed and expert technical support

- Replacement or refund for products not performing as stated on the datasheet
- Valid for 12 months from date of delivery
- Response to your inquiry within 24 hours

- We provide support in Chinese, English, French, German, Japanese and Spanish
- Extensive multi-media technical resources to help you
- We investigate all quality concerns to ensure our products perform to the highest standards

If the product does not perform as described on this datasheet, we will offer a refund or replacement. For full details of the Abpromise, please visit <https://www.abcam.com/abpromise> or contact our technical team.

Terms and conditions

- Guarantee only valid for products bought direct from Abcam or one of our authorized distributors