

Product datasheet

Recombinant Human BLK protein ab157962

1 Image

Overview

<b>Product name</b>	Recombinant Human BLK protein
<b>Protein length</b>	Full length protein

Description

<b>Nature</b>	Recombinant
<b>Source</b>	Wheat germ
<b>Amino Acid Sequence</b>	
<b>Species</b>	Human
<b>Sequence</b>	<p>MGLVSSKKPDKEKPIKEKDKGQWSPLKVSQAQDKDAP          PLPPLVVFNHLTPP          PPDEHLDEDKHFVVALYDYAMNDRDLQMLKGEKLQ          VLKGTGDWWLARS          VTGREGYVPSNFVARVESLEMERWFFRSQGRKEAER          QLLAPINKAGSFLI          RESETNKGAFSLSVKDVTTQGELIKHYKIRCLDEGGYI          SPRITFPSLQA          LVQHYSKKGDLGCQRLTLPVVRPAPQNPWAQDEWEI          PRQSLRLVRKLGSG          QFGEVWMGYKNNMKVAIKTLKEGTMSPEAFLGEANV          MKALQHERLVRLY          AVVTKEPIYVTEYMARGCLLDLFLKTDEGSRLSLPRID          MSAQIAEGMAY          IERMNSIHRDLRAANILVSEALCCKIADFGLARIIDSEYTA          QEGAKFPIK          WTAPEAIHFGVFTIKADVWSFGVLLMEVVYGRVPYPG          MSNPEVIRNLER          GYRMPRPDTCPPELYRGVIAECWRSRPEERPTFEFLQ          SVLEDFYTATERQ YELQP</p>
<b>Amino acids</b>	1 to 505
<b>Tags</b>	proprietary tag N-Terminus

Specifications

Our [Abpromise guarantee](#) covers the use of **ab157962** in the following tested applications.

The application notes include recommended starting dilutions; optimal dilutions/concentrations should be determined by the end user.

<b>Applications</b>	ELISA Western blot
<b>Form</b>	Liquid
<b>Additional notes</b>	Protein concentration is above or equal to 0.05 mg/ml.

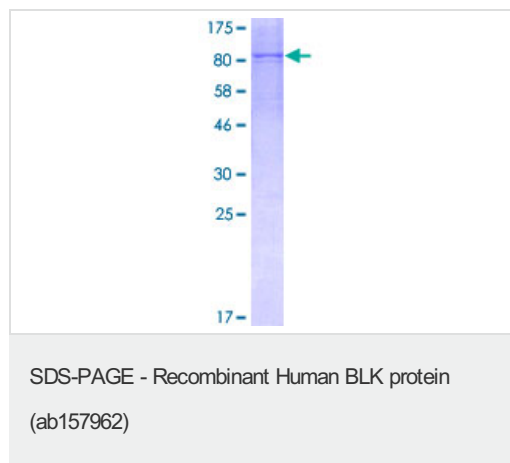
## Preparation and Storage

<b>Stability and Storage</b>	Shipped on dry ice. Upon delivery aliquot and store at -80°C. Avoid freeze / thaw cycles. pH: 8.00 Constituents: 0.31% Glutathione, 0.79% Tris HCl
------------------------------	--

## General Info

<b>Function</b>	Modulator of beta-cells function, acting through the up-regulation of PDX1 and NKX6-1 and consequent stimulation of insulin secretion in response to glucose.
<b>Tissue specificity</b>	Expressed in lymphatic organs, pancreatic islets, Leydig cells, striate ducts of salivary glands and hair follicles.
<b>Involvement in disease</b>	Defects in BLK are a cause of maturity-onset diabetes of the young type 11 (MODY11) [MIM:613375]. MODY11 is a form of diabetes that is characterized by an autosomal dominant mode of inheritance, onset in childhood or early adulthood (usually before 25 years of age), a primary defect in insulin secretion and frequent insulin-independence at the beginning of the disease.
<b>Sequence similarities</b>	Belongs to the protein kinase superfamily. Tyr protein kinase family. SRC subfamily. Contains 1 protein kinase domain. Contains 1 SH2 domain. Contains 1 SH3 domain.

## Images



ab157962 on a 12.5% SDS-PAGE stained with Coomassie Blue.

## **Our Abpromise to you: Quality guaranteed and expert technical support**

---

- Replacement or refund for products not performing as stated on the datasheet
- Valid for 12 months from date of delivery
- Response to your inquiry within 24 hours
  
- We provide support in Chinese, English, French, German, Japanese and Spanish
- Extensive multi-media technical resources to help you
- We investigate all quality concerns to ensure our products perform to the highest standards

If the product does not perform as described on this datasheet, we will offer a refund or replacement. For full details of the Abpromise, please visit <https://www.abcam.com/abpromise> or contact our technical team.

## **Terms and conditions**

---

- Guarantee only valid for products bought direct from Abcam or one of our authorized distributors