

Product datasheet

Recombinant Human BMPR1A protein (Tagged-His Tag) ab219485

1 Image

Description

<b>Product name</b>	Recombinant Human BMPR1A protein (Tagged-His Tag)
<b>Purity</b>	> 95 % SDS-PAGE. ab219485 was purified using conventional chromatography techniques.
<b>Endotoxin level</b>	< 1.000 Eu/µg
<b>Expression system</b>	Baculovirus infected insect cells
<b>Accession</b>	<a href="#">P36894</a>
<b>Protein length</b>	Protein fragment
<b>Animal free</b>	No
<b>Nature</b>	Recombinant
<b>Species</b>	Human
<b>Sequence</b>	ADPQNLD SML HGTGMKSDSD QKKSENGVTL APEDTLPFLK CYCSGHCPDD AINNTCITNG HCF AII EEDD QGETTLASGC MKYEGSDFQC KDSPKAQLRR TIECCRTNLC NQYLQPTLPP VVIGPFFDGS IRLEPKSCDK THTCPPCPAP ELGGPSVFL FPPKPKDTLM ISRTPEVTCV VVDVSHEDPE VKFNWYVDGV EVHNAKTKPR EEQYNSTYRV VSVLTVLHQD WLNGKEYKCK VSNKALPAPI EKTISKAKGQ PREPQVYTL P PSRDELTKNQ VSLTCLVKGF YPSDIAVEWE SNGQPENNYK TTPPVLDSDG SFFLYSKLTV DKSRWQQGNV FSCSVMHEAL HNHYTQKSLS LSPGKHHHHH H
<b>Predicted molecular weight</b>	41 kDa including tags
<b>Amino acids</b>	24 to 152
<b>Tags</b>	His tag C-Terminus
<b>Additional sequence information</b>	extracellular domain with a hlgG-His-tag at C-terminus (NP_004320).

Specifications

Our [Abpromise guarantee](#) covers the use of **ab219485** in the following tested applications.

The application notes include recommended starting dilutions; optimal dilutions/concentrations should be determined by the end user.

**Applications** SDS-PAGE

**Form** Liquid

### Preparation and Storage

**Stability and Storage** Shipped at 4°C. Store at +4°C short term (1-2 weeks). Upon delivery aliquot. Store at -20°C or -80°C. Avoid freeze / thaw cycle.

pH: 7.4

Constituents: 10% Glycerol, 90% PBS

### General Info

**Function** On ligand binding, forms a receptor complex consisting of two type II and two type I transmembrane serine/threonine kinases. Type II receptors phosphorylate and activate type I receptors which autophosphorylate, then bind and activate SMAD transcriptional regulators. Receptor for BMP2, BMP4, GDF5 and GDF6. Positively regulates chondrocyte differentiation through GDF5 interaction. Mediates induction of adipogenesis by GDF6.

**Tissue specificity** Highly expressed in skeletal muscle.

**Involvement in disease** Juvenile polyposis syndrome  
Polyposis syndrome, mixed hereditary 2  
A microdeletion of chromosome 10q23 involving BMPR1A and PTEN is a cause of chromosome 10q23 deletion syndrome, which shows overlapping features of the following three disorders: Bannayan-Zonana syndrome, Cowden disease and juvenile polyposis syndrome.

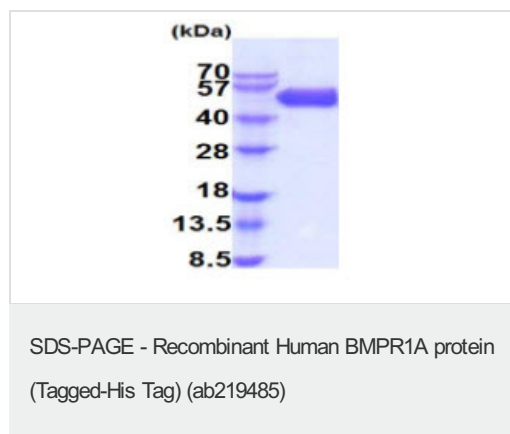
**Sequence similarities** Belongs to the protein kinase superfamily. TKL Ser/Thr protein kinase family. TGFB receptor subfamily.

Contains 1 GS domain.

Contains 1 protein kinase domain.

**Cellular localization** Membrane.

### Images



15% SDS-PAGE analysis of ab219485 (3µg).

## **Our Abpromise to you: Quality guaranteed and expert technical support**

---

- Replacement or refund for products not performing as stated on the datasheet
- Valid for 12 months from date of delivery
- Response to your inquiry within 24 hours
  
- We provide support in Chinese, English, French, German, Japanese and Spanish
- Extensive multi-media technical resources to help you
- We investigate all quality concerns to ensure our products perform to the highest standards

If the product does not perform as described on this datasheet, we will offer a refund or replacement. For full details of the Abpromise, please visit <https://www.abcam.com/abpromise> or contact our technical team.

## **Terms and conditions**

---

- Guarantee only valid for products bought direct from Abcam or one of our authorized distributors