

Product datasheet

Recombinant Human Bone marrow stromal cell antigen 1 protein (His tag) ab235881

1 Image

Description

Product name	Recombinant Human Bone marrow stromal cell antigen 1 protein (His tag)	
Purity	> 95 % SDS-PAGE. ab235881 was purified by using conventional chromatography techniques.	
Endotoxin level	< 0.100 Eu/µg	
Expression system	Baculovirus infected insect cells	
Accession	Q10588	
Protein length	Protein fragment	
Animal free	No	
Nature	Recombinant	
Species	Human	
Sequence	RWRGEGTSAHLRDIFLGRCAEYRALLSPEQRNKNCTAWE AFKVALDKDP CSVLPSDYDLFINLSRHSIPRDKSLFWENSHLLVNSFADNT RRFMPLSDV LYGRVADFLSWCRQKND SGLDYQSCPTSEDCENNPVDS FWKRASIYSKD SSGVIHVMLNGSEPTGAYPIKGGFFADYEIPNLQKEKITRIEM VMHEIGG PNVE SCGEGSMKVLEKRLKDMGFQYSCINDYRPVKLLQC VDHSTHPDCAL KSA AAAATQRKAHHHHHH	
Predicted molecular weight	31 kDa including tags	
Amino acids	33 to 293	
Tags	His tag N-Terminus	
Additional sequence information	NP_004325	

Specifications

Our [Abpromise guarantee](#) covers the use of **ab235881** in the following tested applications.

The application notes include recommended starting dilutions; optimal dilutions/concentrations should be determined by the end user.

Applications SDS-PAGE

Form Liquid

Preparation and Storage

Stability and Storage Shipped at 4°C. Store at +4°C short term (1-2 weeks). Store at -20°C or -80°C. Avoid freeze / thaw cycle.
pH: 7.40
Constituents: PBS, 10% Glycerol (glycerin, glycerine)

General Info

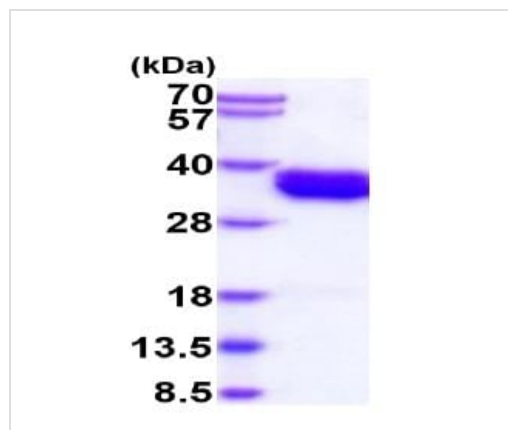
Function Synthesizes the second messengers cyclic ADP-ribose and nicotinate-adenine dinucleotide phosphate, the former a second messenger that elicits calcium release from intracellular stores. May be involved in pre-B-cell growth.

Tissue specificity Widely expressed.

Sequence similarities Belongs to the ADP-ribosyl cyclase family.

Cellular localization Cell membrane.

Images



15% SDS-PAGE analysis of 3 µg ab235881.

28-40 kDa (Under reducing conditions)

SDS-PAGE - Recombinant Human Bone marrow stromal cell antigen 1 protein (His tag) (ab235881)

Please note: All products are "FOR RESEARCH USE ONLY. NOT FOR USE IN DIAGNOSTIC PROCEDURES"

Our Abpromise to you: Quality guaranteed and expert technical support

- Replacement or refund for products not performing as stated on the datasheet
- Valid for 12 months from date of delivery
- Response to your inquiry within 24 hours
- We provide support in Chinese, English, French, German, Japanese and Spanish

- Extensive multi-media technical resources to help you
- We investigate all quality concerns to ensure our products perform to the highest standards

If the product does not perform as described on this datasheet, we will offer a refund or replacement. For full details of the Abpromise, please visit <https://www.abcam.com/abpromise> or contact our technical team.

Terms and conditions

- Guarantee only valid for products bought direct from Abcam or one of our authorized distributors