

## Product datasheet

# Recombinant Human BPNT1 protein ab103057

1 Image

### Description

<b>Product name</b>	Recombinant Human BPNT1 protein	
<b>Purity</b>	> 90 % SDS-PAGE. ab103057 was purified by using conventional chromatography techniques.	
<b>Expression system</b>	Escherichia coli	
<b>Accession</b>	<a href="#">O95861</a>	
<b>Protein length</b>	Full length protein	
<b>Animal free</b>	No	
<b>Nature</b>	Recombinant	
<b>Species</b>	Human	
<b>Sequence</b>	<p>MRGSHHHHHHGMASMTGGQQMGRDLYDDDDKDRWGS            MASSNTVLMRLVAS            AYSIAQKAGMIVRRVIAEGDLGMEKTCATDLQTKADRLAQ            MSICSSLAR            KFPKLTIIIGEEEDLPSEEVDQELIEDSQWEEILKQPCPSQYS            AIKEEDLVV            WVDPLDGTKEYTEGLLDNVTVLIGIAYEGKAIAGVINQPYYN            YEAGPDAV            LGRTIWGVLGLGAFGFQLKEVPAGKHIITTRSHSNKLVTD            CVAAMNPDA            VLRVGGAGNKIIQLIEGKASAYVFASPGCKKWDTCAPEVIL            HAVGGKLT            IHGNVLQYHKDVKHMNSAGVLATLRNYDYYASRPESIKN            ALVP</p>	
<b>Predicted molecular weight</b>	38 kDa including tags	
<b>Amino acids</b>	1 to 308	
<b>Tags</b>	His tag N-Terminus	

### Specifications

Our [Abpromise guarantee](#) covers the use of **ab103057** in the following tested applications.

The application notes include recommended starting dilutions; optimal dilutions/concentrations should be determined by the end user.

**Applications** SDS-PAGE

	Mass Spectrometry
<b>Mass spectrometry</b>	MALDI-TOF
<b>Form</b>	Liquid

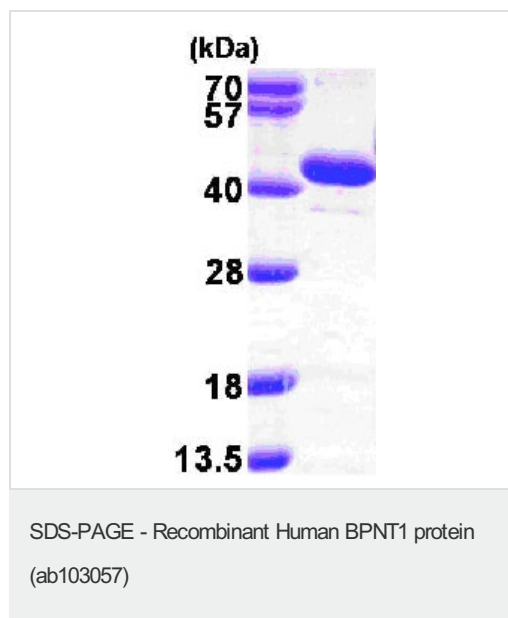
## Preparation and Storage

<b>Stability and Storage</b>	Shipped at 4°C. Store at +4°C short term (1-2 weeks). Upon delivery aliquot. Store at -20°C or -80°C. Avoid freeze / thaw cycle. pH: 8.00 Constituents: 0.077% DTT, 0.316% Tris HCl, 10% Glycerol, 0.58% Sodium chloride
------------------------------	--

## General Info

<b>Function</b>	Converts adenosine 3'-phosphate 5'-phosphosulfate (PAPS) to adenosine 5'-phosphosulfate (APS) and 3'(2')-phosphoadenosine 5'- phosphate (PAP) to AMP. Has 1000-fold lower activity towards inositol 1,4-bisphosphate (Ins(1,4)P2) and inositol 1,3,4-trisphosphate (Ins(1,3,4)P3), but does not hydrolyze Ins(1)P, Ins(3,4)P2, Ins(1,3,4,5)P4 or InsP6.
<b>Tissue specificity</b>	Highly expressed in kidney, liver, pancreas and heart. Detected at lower levels in brain, placenta, lung and skeletal muscle.
<b>Sequence similarities</b>	Belongs to the inositol monophosphatase family.

## Images



15% SDS-PAGE (3 µg)

**Please note:** All products are "FOR RESEARCH USE ONLY. NOT FOR USE IN DIAGNOSTIC PROCEDURES"

**Our Abpromise to you: Quality guaranteed and expert technical support**

- Replacement or refund for products not performing as stated on the datasheet
- Valid for 12 months from date of delivery
- Response to your inquiry within 24 hours
  
- We provide support in Chinese, English, French, German, Japanese and Spanish
- Extensive multi-media technical resources to help you
- We investigate all quality concerns to ensure our products perform to the highest standards

If the product does not perform as described on this datasheet, we will offer a refund or replacement. For full details of the Abpromise, please visit <https://www.abcam.com/abpromise> or contact our technical team.

### **Terms and conditions**

---

- Guarantee only valid for products bought direct from Abcam or one of our authorized distributors