

Product datasheet

Recombinant Human BPR protein ab153540

1 Image

Overview

Product name	Recombinant Human BPR protein
Protein length	Full length protein

Description

Nature	Recombinant
Source	Wheat germ
Amino Acid Sequence	
Species	Human
Sequence	<p>MGRPAGLFPPLCPFLGFRPEACWERHMQUIERAPSVP PFLRWAGYRPGPVR RRGKVELIKFVRVQWRRPQVEWRRRRWGPGPGASM AGSEELGLREDTLRV LAAFLRRGEAAGSPVPTPPSPAQEEPTDFLSRLRRCL PCSLGRGAAPSES PRPCSLPIRPCYGLEPGPATPDFYALVAQRLEQLVQE QLKSPPSPELQGP PSTEKEAILRRLVALLEEEAEVINQKLASDPALRSKLV LSSDSFARLVE LFCSRDDSSRPSRACPGPPPPSPEPLARLALAMELS RRVAGLGGTLAGLS VEHVHSFTPWIAHGGWEGILAVSPVDLNLPLD</p>
Amino acids	1 to 333
Tags	GST tag N-Terminus

Specifications

Our [Abpromise guarantee](#) covers the use of **ab153540** in the following tested applications.

The application notes include recommended starting dilutions; optimal dilutions/concentrations should be determined by the end user.

Applications	Western blot
	ELISA
Form	Liquid

Additional notes

Protein concentration is above or equal to 0.05 mg/ml.
This product was previously labelled as BCL2L12

Preparation and Storage

Stability and Storage

Shipped on dry ice. Upon delivery aliquot and store at -80°C. Avoid freeze / thaw cycles.

pH: 8.00

Constituents: 0.31% Glutathione, 0.79% Tris HCl

General Info

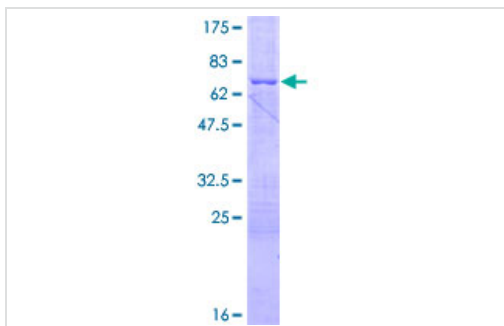
Tissue specificity

Expressed mainly in breast, thymus, prostate, fetal liver, colon, placenta, pancreas, small intestine, spinal cord, kidney, and bone marrow and to a lesser extent in many other tissues. Isoform 2 is primarily expressed in skeletal muscle.

Sequence similarities

Belongs to the Bcl-2 family.

Images



ab153540 on a 12.5% SDS-PAGE stained with Coomassie Blue.

SDS-PAGE - Recombinant Human BPR protein
(ab153540)

Please note: All products are "FOR RESEARCH USE ONLY. NOT FOR USE IN DIAGNOSTIC PROCEDURES"

Our Abpromise to you: Quality guaranteed and expert technical support

- Replacement or refund for products not performing as stated on the datasheet
- Valid for 12 months from date of delivery
- Response to your inquiry within 24 hours
- We provide support in Chinese, English, French, German, Japanese and Spanish
- Extensive multi-media technical resources to help you
- We investigate all quality concerns to ensure our products perform to the highest standards

If the product does not perform as described on this datasheet, we will offer a refund or replacement. For full details of the Abpromise,

please visit <https://www.abcam.com/abpromise> or contact our technical team.

Terms and conditions

- Guarantee only valid for products bought direct from Abcam or one of our authorized distributors