

Product datasheet

Recombinant human Brk/PTK6 protein ab60888

5 Images

Description

---

<b>Product name</b>	Recombinant human Brk/PTK6 protein
<b>Purity</b>	> 90 % SDS-PAGE. Purity: >90% as determined by densitometry. Affinity purified.
<b>Expression system</b>	Baculovirus infected Sf9 cells
<b>Protein length</b>	Full length protein
<b>Animal free</b>	No
<b>Nature</b>	Recombinant
<b>Species</b>	Human

Specifications

---

Our [Abpromise guarantee](#) covers the use of **ab60888** in the following tested applications.

The application notes include recommended starting dilutions; optimal dilutions/concentrations should be determined by the end user.

<b>Applications</b>	SDS-PAGE Functional Studies
<b>Form</b>	Liquid
<b>Additional notes</b>	<a href="#">ab204877</a> (Poly (4:1 Glu, Tyr) peptide) can be utilized as a substrate for assessing kinase activity This product was previously labelled as Brk

Preparation and Storage

---

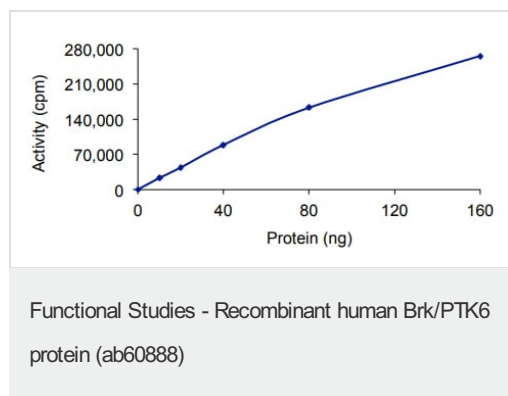
<b>Stability and Storage</b>	Shipped on dry ice. Upon delivery aliquot and store at -80°C. Avoid freeze / thaw cycles. pH: 7.50 Constituents: 0.0038% EGTA, 0.00174% PMSF, 0.00385% DTT, 0.79% Tris HCl, 0.00292% EDTA, 25% Glycerol (glycerin, glycerine), 0.87% Sodium chloride This product is an active protein and may elicit a biological response in vivo, handle with caution.
------------------------------	--

General Info

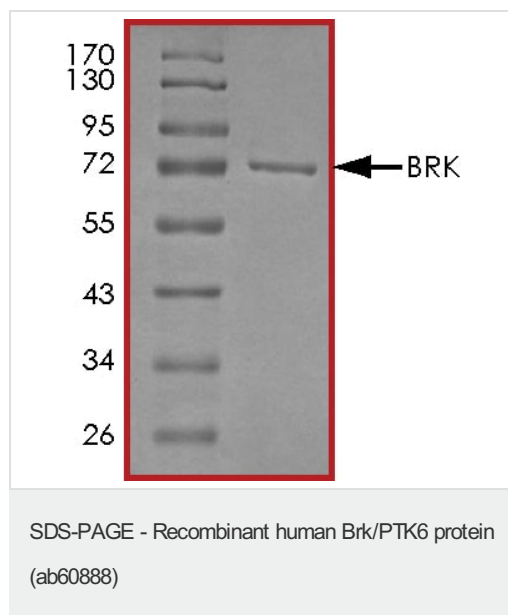
---

<b>Function</b>	Phosphorylates KHDRBS1, KHDRBS2, KHDRBS3 and STAP2/BKS. May function as an intracellular signal transducer in epithelial tissues. Overexpression in mammary cells leads to mitogenically sensitization to EGF, and results in a partially transformed phenotype. Its presence in the nucleus appears to be linked to suppression of tumor progression.
<b>Tissue specificity</b>	Epithelia-specific. Very high level in colon and high levels in small intestine and prostate, and low levels in some fetal tissues. Expressed at low level in some breast tumors, but not in normal breast. Also found in melanocytes. Not expressed in heart, brain, placenta, lung, liver, skeletal muscle, kidney and pancreas.
<b>Sequence similarities</b>	Belongs to the protein kinase superfamily. Tyr protein kinase family. BRK/PTK6/SIK subfamily. Contains 1 protein kinase domain. Contains 1 SH2 domain. Contains 1 SH3 domain.
<b>Post-translational modifications</b>	Autophosphorylated. The phosphorylation of Tyr-447 may lead to the autoinhibition of the enzyme.
<b>Cellular localization</b>	Cytoplasm. Nucleus. Colocalizes with KHDRBS1, KHDRBS2 or KHDRBS3, within the nucleus. In secretory epithelial cells from prostate adenocarcinoma, nuclear localization is higher in low-grade and lower in high-grade regions of the tumors.

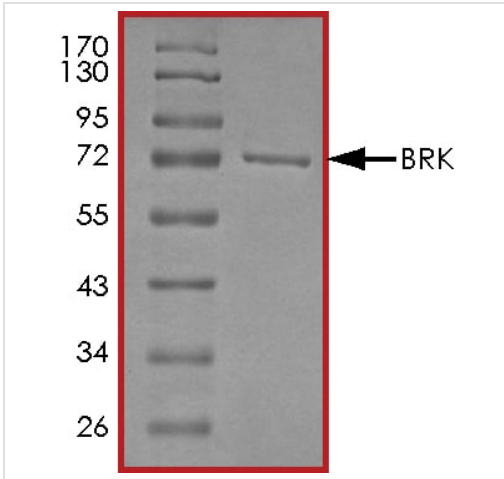
## Images



The specific activity of Brk/PTK6 (ab60888) was determined to be 136 nmol/min/mg as per activity assay protocol

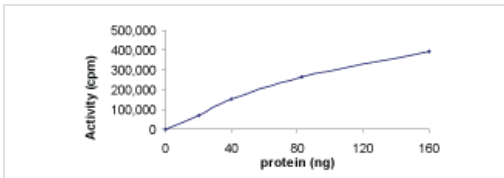


SDS PAGE analysis of ab60888



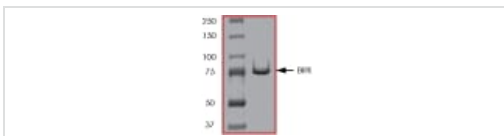
SDS-PAGE - Recombinant human Brk/PTK6 protein (ab60888)

Sample Kinase Activity Plot.



Functional Studies - Recombinant human Brk/PTK6 protein (ab60888)

ab60888 on SDS-PAGE, MW ~80 kDa.



SDS-PAGE - Recombinant human Brk/PTK6 protein (ab60888)

**Please note:** All products are "FOR RESEARCH USE ONLY. NOT FOR USE IN DIAGNOSTIC PROCEDURES"

### Our Abpromise to you: Quality guaranteed and expert technical support

- Replacement or refund for products not performing as stated on the datasheet
- Valid for 12 months from date of delivery
- Response to your inquiry within 24 hours
- We provide support in Chinese, English, French, German, Japanese and Spanish
- Extensive multi-media technical resources to help you
- We investigate all quality concerns to ensure our products perform to the highest standards

If the product does not perform as described on this datasheet, we will offer a refund or replacement. For full details of the Abpromise, please visit <https://www.abcam.com/abpromise> or contact our technical team.

## Terms and conditions

---

- Guarantee only valid for products bought direct from Abcam or one of our authorized distributors