

Product datasheet

Recombinant Human BRMS1 protein (denatured)
 ab177609

1 Image

Description

Product name	Recombinant Human BRMS1 protein (denatured)
Purity	> 80 % SDS-PAGE.
Expression system	Escherichia coli
Accession	Q9HCU9
Protein length	Full length protein
Animal free	No
Nature	Recombinant
Species	Human
Sequence	MASMTGGQQM GRGSHMPVQP PSKDTEEMEA EGDSAAEMNG EEEEEEEERS GSQTESEES SEMDDEDYER RRSECVSEML DLEKQFSELK EKLFRERLSQ LRLRLEEVEGA ERAPEYTEPL GGLQRSLKIR IQVAGYKGF CLDVIRNKYE CELQGAKQHL ESEKLLLYDT LQGELQERIQ RLEEDRQSLD LSSEWDDDKL HARGSSRSWD SLPPSKRKKA PLVSGPYVY MLQEIDILED WTAIKKARAA VSPQKRKSDG P
Predicted molecular weight	30 kDa including tags
Amino acids	1 to 246
Tags	T7 tag N-Terminus
Additional sequence information	(NP_056214.1).
Description	Recombinant Human BRMS1 protein

Specifications

Our [Abpromise guarantee](#) covers the use of **ab177609** in the following tested applications.

The application notes include recommended starting dilutions; optimal dilutions/concentrations should be determined by the end user.

Applications SDS-PAGE

Form Liquid

Preparation and Storage

Stability and Storage

Shipped at 4°C. Store at +4°C short term (1-2 weeks). Upon delivery aliquot. Store at -20°C or -80°C. Avoid freeze / thaw cycle.

pH: 8.00

Constituents: 24.02% Urea, 0.32% Tris HCl, 10% Glycerol (glycerin, glycerine)

General Info

Function

Transcriptional repressor. Down-regulates transcription activation by NF-kappa-B by promoting the deacetylation of RELA at 'Lys-310'. Promotes HDAC1 binding to promoter regions. Down-regulates expression of anti-apoptotic genes that are controlled by NF-kappa-B. Promotes apoptosis in cells that have inadequate adherence to a substrate, a process called anoikis, and may thereby inhibit metastasis. May be a mediator of metastasis suppression in breast carcinoma.

Tissue specificity

Expression levels are higher in term placentas than in early placentas. Low levels of expression observed in normal pregnancies and in molar pregnancies.

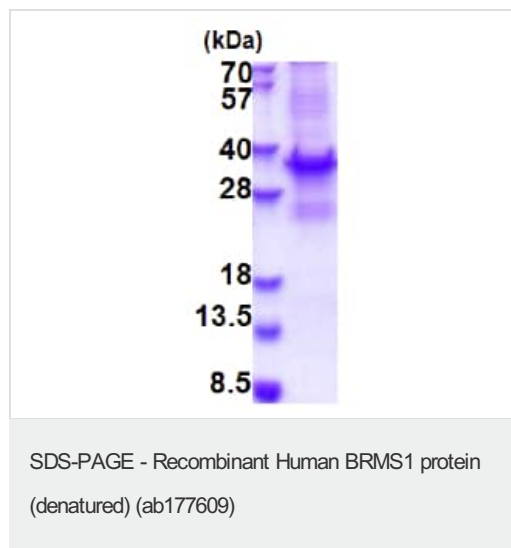
Sequence similarities

Belongs to the BRMS1 family.

Cellular localization

Nucleus. Cytoplasm. Predominantly nuclear.

Images



ab177609 (3ug) on a 15% SDS-PAGE.

Please note: All products are "FOR RESEARCH USE ONLY. NOT FOR USE IN DIAGNOSTIC PROCEDURES"

Our Abpromise to you: Quality guaranteed and expert technical support

- Replacement or refund for products not performing as stated on the datasheet
- Valid for 12 months from date of delivery
- Response to your inquiry within 24 hours

- We provide support in Chinese, English, French, German, Japanese and Spanish
- Extensive multi-media technical resources to help you
- We investigate all quality concerns to ensure our products perform to the highest standards

If the product does not perform as described on this datasheet, we will offer a refund or replacement. For full details of the Abpromise, please visit <https://www.abcam.com/abpromise> or contact our technical team.

Terms and conditions

- Guarantee only valid for products bought direct from Abcam or one of our authorized distributors