

Product datasheet

Recombinant Human BTBD9 protein ab165030

1 Image

Overview

Product name	Recombinant Human BTBD9 protein
Protein length	Protein fragment

Description

Nature	Recombinant
Source	Wheat germ
Amino Acid Sequence	
Species	Human
Sequence	RESQPEAEIPLQDTTAEAFMMLLKYYTGRATLTDEKEE VLLDFLSLAHK YGFPELEDSTSEYLCTILN
Amino acids	2 to 70
Tags	proprietary tag N-Terminus

Specifications

Our [Abpromise guarantee](#) covers the use of **ab165030** in the following tested applications. The application notes include recommended starting dilutions; optimal dilutions/concentrations should be determined by the end user.

Applications	Western blot ELISA
Form	Liquid
Additional notes	Protein concentration is above or equal to 0.05 mg/ml.

Preparation and Storage

Stability and Storage	Shipped on dry ice. Upon delivery aliquot and store at -80°C. Avoid freeze / thaw cycles. pH: 8.00 Constituents: 0.31% Glutathione, 0.79% Tris HCl
------------------------------	--

General Info

Tissue specificity

Highly expressed in kidney and moderately expressed in all other adult and fetal tissues.
Moderately expressed in all specific brain regions examined.

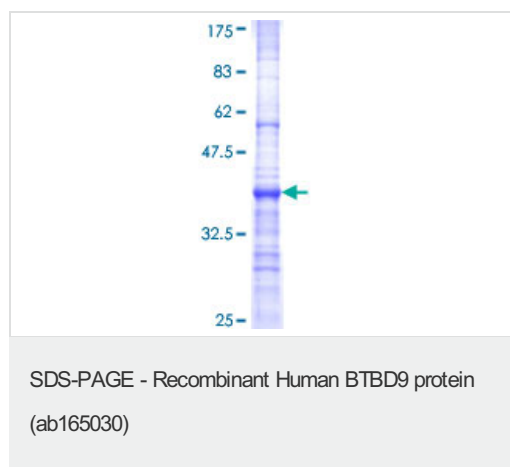
Involvement in disease

Genetic variations in BTBD9 may be associated with susceptibility to restless legs syndrome type 6 (RLS6) [MIM:611185]; also called periodic limb movements in sleep. Restless legs syndrome (RLS) is a neurologic disorder characterized by an uncontrollable urge to move the legs during periods of rest. The majority of patients with RLS also have periodic limb movements in sleep, which are characterized by involuntary, highly stereotypical, regularly occurring limb movements that occur during sleep.

Sequence similarities

Contains 1 BACK (BTB/Kelch associated) domain.
Contains 1 BTB (POZ) domain.

Images



ab165030 on a 12.5% SDS-PAGE stained with Coomassie Blue.

Please note: All products are "FOR RESEARCH USE ONLY AND ARE NOT INTENDED FOR DIAGNOSTIC OR THERAPEUTIC USE"

Our Abpromise to you: Quality guaranteed and expert technical support

- Replacement or refund for products not performing as stated on the datasheet
- Valid for 12 months from date of delivery
- Response to your inquiry within 24 hours
- We provide support in Chinese, English, French, German, Japanese and Spanish
- Extensive multi-media technical resources to help you
- We investigate all quality concerns to ensure our products perform to the highest standards

If the product does not perform as described on this datasheet, we will offer a refund or replacement. For full details of the Abpromise, please visit <https://www.abcam.com/abpromise> or contact our technical team.

Terms and conditions

- Guarantee only valid for products bought direct from Abcam or one of our authorized distributors