

Product datasheet

Recombinant Human CACNA1F protein ab158015

1 Image

Description

<b>Product name</b>	Recombinant Human CACNA1F protein	
<b>Expression system</b>	Wheat germ	
<b>Protein length</b>	Protein fragment	
<b>Animal free</b>	No	
<b>Nature</b>	Recombinant	
<b>Species</b>	Human	
<b>Sequence</b>	LHVPGTHSDPSHGKRGSAADSLVEAVLISEGLGLFARD PRFVALAKQEIAD ACRLTDEMMDNAASDLLAQGTSSLYSDEESILSRFDE EDLGDEMACVHAL	
<b>Amino acids</b>	1878 to 1977	
<b>Tags</b>	GST tag N-Terminus	

Specifications

Our [Abpromise guarantee](#) covers the use of **ab158015** in the following tested applications.

The application notes include recommended starting dilutions; optimal dilutions/concentrations should be determined by the end user.

<b>Applications</b>	ELISA
	Western blot
<b>Form</b>	Liquid
<b>Additional notes</b>	Protein concentration is above or equal to 0.05 mg/ml.

Preparation and Storage

<b>Stability and Storage</b>	Shipped on dry ice. Upon delivery aliquot and store at -80°C. Avoid freeze / thaw cycles.
	pH: 8.00
	Constituents: 0.31% Glutathione, 0.79% Tris HCl

General Info

**Relevance**

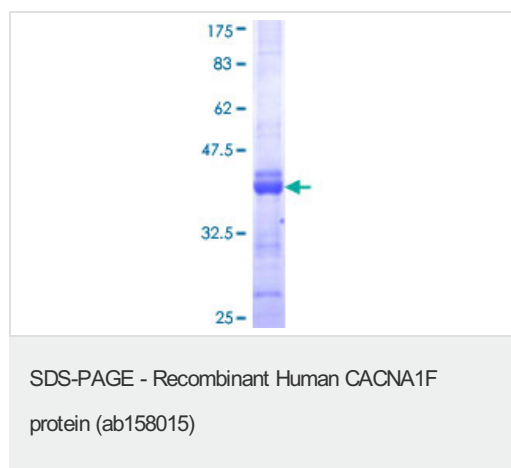
CACNA1F (Calcium channel, voltage-dependent, L type, alpha 1F subunit) is a subunit of a voltage-dependent calcium channel complex. Voltage-gated calcium channels mediate the entry of calcium ions into excitable cells. CACNA1F gives rise to L-type calcium currents. Long-lasting (L-type) calcium channels belong to the "high-voltage activated" (HVA) group and are blocked by dihydropyridines (DHP).

**Cellular localization**

Membrane; Multi-pass membrane protein.

**Images**

---



ab158015 on a 12.5% SDS-PAGE stained with Coomassie Blue.

**Please note:** All products are "FOR RESEARCH USE ONLY. NOT FOR USE IN DIAGNOSTIC PROCEDURES"

**Our Abpromise to you: Quality guaranteed and expert technical support**

---

- Replacement or refund for products not performing as stated on the datasheet
- Valid for 12 months from date of delivery
- Response to your inquiry within 24 hours
- We provide support in Chinese, English, French, German, Japanese and Spanish
- Extensive multi-media technical resources to help you
- We investigate all quality concerns to ensure our products perform to the highest standards

If the product does not perform as described on this datasheet, we will offer a refund or replacement. For full details of the Abpromise, please visit <https://www.abcam.com/abpromise> or contact our technical team.

**Terms and conditions**

---

- Guarantee only valid for products bought direct from Abcam or one of our authorized distributors