

Product datasheet

Recombinant Human Casein Kinase 1 delta/CSNK1D protein (denatured) ab180293

1 Image

Description

<b>Product name</b>	Recombinant Human Casein Kinase 1 delta/CSNK1D protein (denatured)	
<b>Purity</b>	> 85 % SDS-PAGE.	
<b>Expression system</b>	Escherichia coli	
<b>Accession</b>	<a href="#">P48730-2</a>	
<b>Protein length</b>	Full length protein	
<b>Animal free</b>	No	
<b>Nature</b>	Recombinant	
<b>Species</b>	Human	
<b>Sequence</b>	MGSSHHHHHH SSGLVPRGSH MELRVGNRYR LGRKIGSGSF GDIYLGTDIA AGEEVAIKLE CVKTKHPQLH IESKIYKMMQ GGVGIPTIRW CGAEGDYNVM VMELLGPSLE DLFNFCSRKF SLKTVLLLD QMISRIEYIH SKNFIHRDVK PDNFLMGLGK KGNLVYIIDF GLAKKYRDAR THQHIPPYREN KNLTGTARYA SINHLGIEQ SRRDDLESLG YLMYFNLGS LPWQGLKAAT KRQKYERISE KKMSTPIEVL CKGYPSEFAT YLNFCRSLRF DDKPDYSYLR QLFRNLFHRQ GFSYDYVFDW NMLKFGASRA ADDAERERRD REERLRHSRN PATRGLPSTA SGRLRGTQEV APPTPLTPTS HTANTSPRPV SGMERERKVS MRLHRGAPVN ISSSDLTGRQ DTSRMSTSQN SIPFEHHGK	
<b>Predicted molecular weight</b>	49 kDa including tags	
<b>Amino acids</b>	1 to 409	
<b>Tags</b>	His tag N-Terminus	
<b>Additional sequence information</b>	Isoform 2	

Specifications

Our [Abpromise guarantee](#) covers the use of **ab180293** in the following tested applications.

The application notes include recommended starting dilutions; optimal dilutions/concentrations should be determined by the end user.

<b>Applications</b>	SDS-PAGE
<b>Form</b>	Liquid
<b>Additional notes</b>	Previously labelled as Casein Kinase 1 delta.

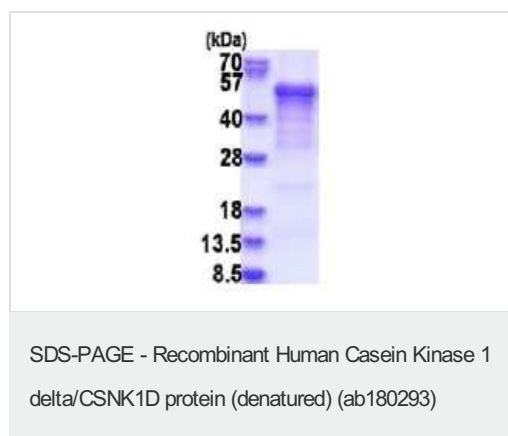
## Preparation and Storage

<b>Stability and Storage</b>	Shipped at 4°C. Store at +4°C short term (1-2 weeks). Upon delivery aliquot. Store at -20°C or -80°C. Avoid freeze / thaw cycle.  pH: 8.00 Constituents: 0.32% Tris HCl, 10% Glycerol (glycerin, glycerine), 2.4% Urea
------------------------------	---

## General Info

<b>Function</b>	Casein kinases are operationally defined by their preferential utilization of acidic proteins such as caseins as substrates. It can phosphorylate a large number of proteins. Participates in Wnt signaling. Central component of the circadian clock. May act as a negative regulator of circadian rhythmicity by phosphorylating PER1 and PER2. Retains PER1 in the cytoplasm.
<b>Tissue specificity</b>	Expressed in all tissues examined, including brain, heart, lung, liver, pancreas, kidney, placenta and skeletal muscle. In blood, highly expressed in hemopoietic cells and mature granulocytes. Also found in monocytes and lymphocytes.
<b>Involvement in disease</b>	Defects in CSNK1D are a cause of familial advanced sleep-phase syndrome (FASPS) [MIM:604348]. FASPS is characterized by very early sleep onset and offset. Individuals are 'morning larks' with a 4 hours advance of the sleep, temperature and melatonin rhythms.
<b>Sequence similarities</b>	Belongs to the protein kinase superfamily. CK1 Ser/Thr protein kinase family. Casein kinase I subfamily. Contains 1 protein kinase domain.
<b>Post-translational modifications</b>	Autophosphorylated on serine and threonine residues.
<b>Cellular localization</b>	Cytoplasm. Nucleus.

## Images



15% SDS-PAGE (3µg)

**Please note:** All products are "FOR RESEARCH USE ONLY. NOT FOR USE IN DIAGNOSTIC PROCEDURES"

### **Our Abpromise to you: Quality guaranteed and expert technical support**

---

- Replacement or refund for products not performing as stated on the datasheet
- Valid for 12 months from date of delivery
- Response to your inquiry within 24 hours
  
- We provide support in Chinese, English, French, German, Japanese and Spanish
- Extensive multi-media technical resources to help you
- We investigate all quality concerns to ensure our products perform to the highest standards

If the product does not perform as described on this datasheet, we will offer a refund or replacement. For full details of the Abpromise, please visit <https://www.abcam.com/abpromise> or contact our technical team.

### **Terms and conditions**

---

- Guarantee only valid for products bought direct from Abcam or one of our authorized distributors