

Product datasheet

Recombinant human Cathepsin F protein ab198436

2 Images

Description

<b>Product name</b>	Recombinant human Cathepsin F protein
<b>Biological activity</b>	≥ 0.9 pmole/min/μg. Enzyme activity was measured in a buffer containing 100 mM Sodium acetate (pH 5.5), 2 mM EDTA, 8 mM DTT, 0.05% Brij, and 20 μM substrate (Z-FRAMC), with 3.75-30 ng/μl Cathepsin F. Reaction was carried out at 30°C for 40-120 min, and fluorescence signal was measured at Ex360 nm/Em460 nm. Enzyme was preactivated in 50 mM sodium acetate pH 4.5, 5 mM DTT buffer for 90 min at RT prior to reaction.
<b>Purity</b>	> 90 % SDS-PAGE. Purity varies with Lot.
<b>Expression system</b>	HEK 293 cells
<b>Accession</b>	<a href="#">Q9UBX1</a>
<b>Protein length</b>	Full length protein
<b>Animal free</b>	No
<b>Nature</b>	Recombinant
<b>Species</b>	Human
<b>Predicted molecular weight</b>	53 kDa including tags
<b>Amino acids</b>	20 to 484
<b>Tags</b>	His tag C-Terminus
<b>Additional sequence information</b>	Mature protein Cathepsin F; NM_003793. Also contains CD33 signal peptide (a.a. 1-16). MWt. is more than 58kDa after post-modification. Expressed in FreeStyle 293-F cells.

Specifications

Our [Abpromise guarantee](#) covers the use of **ab198436** in the following tested applications.

The application notes include recommended starting dilutions; optimal dilutions/concentrations should be determined by the end user.

<b>Applications</b>	Functional Studies SDS-PAGE
<b>Form</b>	Liquid

Preparation and Storage

<b>Stability and Storage</b>	Shipped on Dry Ice. Store at -80°C. Avoid freeze / thaw cycle.
------------------------------	--

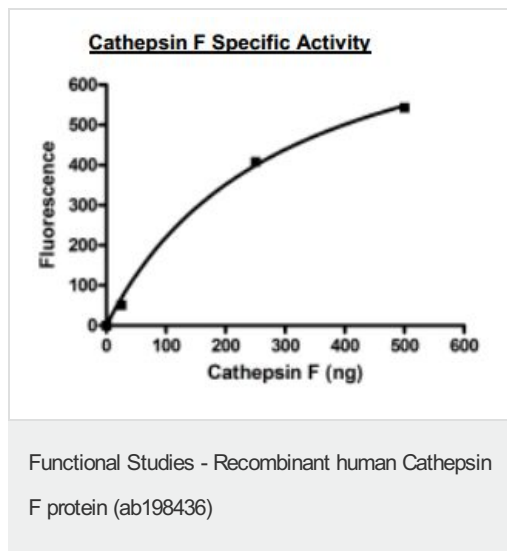
Constituents: 0.36% Sodium acetate, 0.78% Sodium chloride, 10% Glycerol

This product is an active protein and may elicit a biological response in vivo, handle with caution.

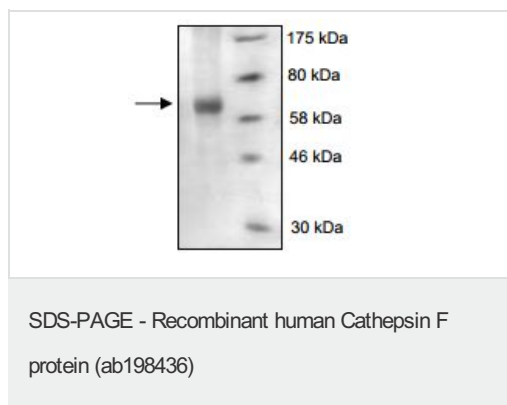
## General Info

<b>Function</b>	Thiol protease which is believed to participate in intracellular degradation and turnover of proteins. Has also been implicated in tumor invasion and metastasis.
<b>Tissue specificity</b>	High expression levels in heart, skeletal muscle, brain, testis and ovary; moderate levels in prostate, placenta, liver and colon; and no detectable expression in peripheral leukocytes and thymus.
<b>Sequence similarities</b>	Belongs to the peptidase C1 family.
<b>Cellular localization</b>	Lysosome.

## Images



Activity assay of ab198436.



10% SDS-PAGE analysis of 3 µg ab198436 with Coomassie staining.

**Please note:** All products are "FOR RESEARCH USE ONLY. NOT FOR USE IN DIAGNOSTIC PROCEDURES"

**Our Abpromise to you: Quality guaranteed and expert technical support**

- Replacement or refund for products not performing as stated on the datasheet
- Valid for 12 months from date of delivery
- Response to your inquiry within 24 hours
  
- We provide support in Chinese, English, French, German, Japanese and Spanish
- Extensive multi-media technical resources to help you
- We investigate all quality concerns to ensure our products perform to the highest standards

If the product does not perform as described on this datasheet, we will offer a refund or replacement. For full details of the Abpromise, please visit <https://www.abcam.com/abpromise> or contact our technical team.

### **Terms and conditions**

---

- Guarantee only valid for products bought direct from Abcam or one of our authorized distributors