

Product datasheet

Recombinant human CCL23 protein (Active) ab243242

1 Image

Description

<b>Product name</b>	Recombinant human CCL23 protein (Active)	
<b>Biological activity</b>	Fully biologically active when compared to standard. The biological activity determined by a chemotaxis bioassay using human T-lymphocytes is in a concentration of 10-50 ng/ml.	
<b>Purity</b>	> 97 % SDS-PAGE. >97% as determined by SDS-PAGE and HPLC.	
<b>Endotoxin level</b>	< 1.000 Eu/µg	
<b>Expression system</b>	Escherichia coli	
<b>Accession</b>	<a href="#">P55773</a>	
<b>Protein length</b>	Full length protein	
<b>Animal free</b>	No	
<b>Nature</b>	Recombinant	
<b>Species</b>	Human	
<b>Sequence</b>	RVTKDAETEFMMSKLPLENPVLLDRFHATSADCCISYTPR SIPCSLLESY FETNSECSKPGVIFLTKKGRRFCANPSDKQVQVCMRMLK LDTRIKTRKN	
<b>Predicted molecular weight</b>	11 kDa	
<b>Amino acids</b>	22 to 120	
<b>Additional sequence information</b>	Full-length mature chain lacking the signal peptide.	

Specifications

Our [Abpromise guarantee](#) covers the use of **ab243242** in the following tested applications.

The application notes include recommended starting dilutions; optimal dilutions/concentrations should be determined by the end user.

<b>Applications</b>	SDS-PAGE Functional Studies HPLC
<b>Form</b>	Lyophilized

Preparation and Storage

## Stability and Storage

Shipped at 4°C. Store at -20°C or -80°C. Avoid freeze / thaw cycle.

Constituent: PBS

0.2 µm filtered

This product is an active protein and may elicit a biological response in vivo, handle with caution.

## Reconstitution

Briefly centrifuge prior to opening to bring the contents to the bottom. Reconstitute in sterile distilled water or aqueous buffer containing 0.1 % BSA to a concentration of 0.1-1.0 mg/mL. Stock solutions should be apportioned into working aliquots and stored at -20 °C or below. Further dilutions should be made in appropriate buffered solutions.

## General Info

---

### Function

Shows chemotactic activity for monocytes, resting T-lymphocytes, and neutrophils, but not for activated lymphocytes. Inhibits proliferation of myeloid progenitor cells in colony formation assays. This protein can bind heparin. Binds CCR1. CCL23(19-99), CCL23(22-99), CCL23(27-99), CCL23(30-99) are more potent chemoattractants than the small-inducible cytokine A23.

### Tissue specificity

High levels in adult lung, liver, skeletal muscle and pancreas. Moderate levels in fetal liver, adult bone marrow and placenta. The short form is the major species and the longer form was detected only in very low abundance. CCL23(19-99), CCL23(22-99), CCL23(27-99), CCL23(30-99) are found in high levels in synovial fluids from rheumatoid patients.

### Sequence similarities

Belongs to the intercrine beta (chemokine CC) family.

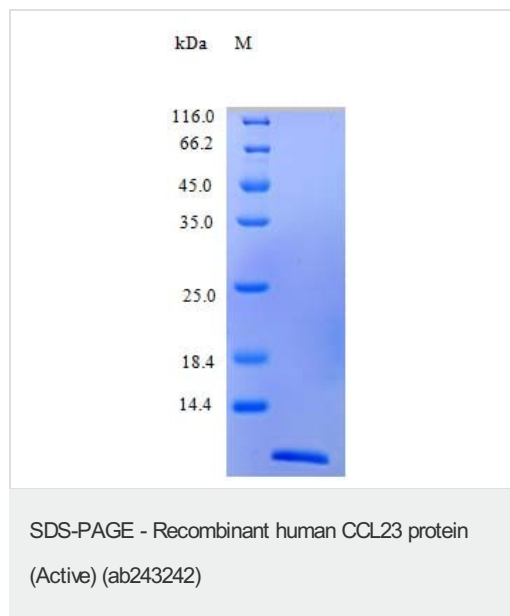
### Cellular localization

Secreted.

---

## Images

---



SDS Page analysis of ab243242

**Please note:** All products are "FOR RESEARCH USE ONLY. NOT FOR USE IN DIAGNOSTIC PROCEDURES"

## **Our Abpromise to you: Quality guaranteed and expert technical support**

---

- Replacement or refund for products not performing as stated on the datasheet
- Valid for 12 months from date of delivery
- Response to your inquiry within 24 hours
  
- We provide support in Chinese, English, French, German, Japanese and Spanish
- Extensive multi-media technical resources to help you
- We investigate all quality concerns to ensure our products perform to the highest standards

If the product does not perform as described on this datasheet, we will offer a refund or replacement. For full details of the Abpromise, please visit <https://www.abcam.com/abpromise> or contact our technical team.

## **Terms and conditions**

---

- Guarantee only valid for products bought direct from Abcam or one of our authorized distributors