

Product datasheet

Recombinant Human CCL25 protein (denatured)
ab202246

1 Image

Description

Product name	Recombinant Human CCL25 protein (denatured)	
Purity	> 90 % SDS-PAGE. ab202246 was purified by conventional chromatography techniques.	
Expression system	Escherichia coli	
Accession	O15444	
Protein length	Full length protein	
Animal free	No	
Nature	Recombinant	
Species	Human	
Sequence	MGSSHHHHHH SSGLVPRGSH MGSHMQGVFE DCCLAYHYPI GWAVLRRAWT YRIQEVSGSC NLPAAIFYLP KRHRKVCGNP KSREVQRAMK LLDARNKVFA KLHHNTQTFQ AGPHAVKKLS SGNSKLSSSK FSNPISSSKR NVSLLISANS GL	
Predicted molecular weight	17 kDa including tags	
Amino acids	24 to 150	
Tags	His tag N-Terminus	
Additional sequence information	This product is for the mature full length protein. The signal peptide is not included. NP_005615.	

Specifications

Our [Abpromise guarantee](#) covers the use of **ab202246** in the following tested applications.

The application notes include recommended starting dilutions; optimal dilutions/concentrations should be determined by the end user.

Applications	SDS-PAGE
Form	Liquid
Additional notes	This product was previously labelled as TECK
	This product was previously labelled as TECK

Preparation and Storage

Stability and Storage

Shipped at 4°C. Store at +4°C short term (1-2 weeks). Upon delivery aliquot. Store at -20°C or -80°C. Avoid freeze / thaw cycle.

pH: 8.00

Constituents: 10% Glycerol (glycerin, glycerine), 0.32% Tris HCl

General Info

Function

Potentially involved in T-cell development. Recombinant protein shows chemotactic activity on thymocytes, macrophages, THP-1 cells, and dendritic cells but is inactive on peripheral blood lymphocytes and neutrophils. Binds to CCR9. Isoform 2 is an antagonist of isoform 1.

Tissue specificity

Specifically expressed by thymic dendritic cells. High levels in thymus and small intestine.

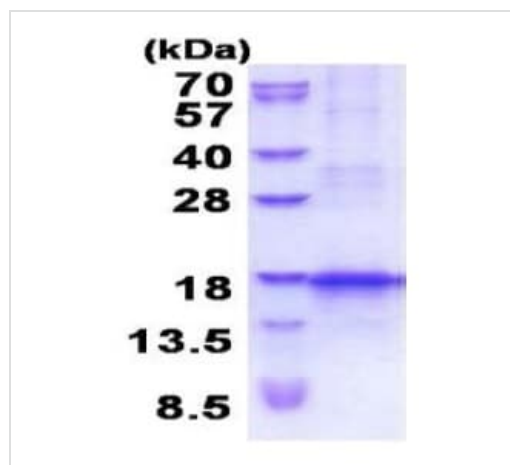
Sequence similarities

Belongs to the intercrine beta (chemokine CC) family.

Cellular localization

Secreted.

Images



15% SDS-PAGE analysis of ab202246 (3 µg).

SDS-PAGE - Recombinant Human CCL25 protein
(denatured) (ab202246)

Please note: All products are "FOR RESEARCH USE ONLY. NOT FOR USE IN DIAGNOSTIC PROCEDURES"

Our Abpromise to you: Quality guaranteed and expert technical support

- Replacement or refund for products not performing as stated on the datasheet
- Valid for 12 months from date of delivery
- Response to your inquiry within 24 hours
- We provide support in Chinese, English, French, German, Japanese and Spanish

- Extensive multi-media technical resources to help you
- We investigate all quality concerns to ensure our products perform to the highest standards

If the product does not perform as described on this datasheet, we will offer a refund or replacement. For full details of the Abpromise, please visit <https://www.abcam.com/abpromise> or contact our technical team.

Terms and conditions

- Guarantee only valid for products bought direct from Abcam or one of our authorized distributors