

Product datasheet

Recombinant Human CCT2 protein (Tagged) ab235076

1 Image

Description

Product name	Recombinant Human CCT2 protein (Tagged)
Purity	> 90 % SDS-PAGE.
Expression system	Escherichia coli
Accession	P78371-1
Protein length	Full length protein
Animal free	No
Nature	Recombinant
Species	Human
Sequence	<p>ASLSLAPVNIKAGADEERAETARLTSFIGAIAIGDLVKSTL GPKGMDKI LLSSGRDASLMVTNDGATILKNIGVDNPAKVLVDMRSRVQ DDEVGDGTTT VTLAAELLREAESLIAKKIHPQTIAGWREATKAAREALLS SAVDHGSD EVKFRQDLMNIAGTTLSSKLLTHHKDHFTKLAVEAVLRLK GSGNLEAHI IKKLGGLADSYLDEGFLLDKKIGVNPQKRIENAKILANTG MDTDKIKI FGSRVRVDSTAKVAEIEHAEKEKMKKVERILKHGINCFIN RQLINYPE QLFGAAGVMAIEHADFAGVERLALVTGGEIASTFDHPELV KLGSKLIEE VMIGEDKLIHFSGVALGEACTMLRGATQQILDEAERSLHD ALCVLAQTV KDSRTVYGGGCSEMLMAHAVTQLANRTPGKEAVAMESY AKALRMLPTIIA DNAGYDSADLVAQLRAAHSEGNTTAGLDMREGTIGDMAIL GITESFQVQR QVLLSAAEAAEVILRVDNIIKAAPRKRVPDHHPC</p>
Predicted molecular weight	73 kDa including tags
Amino acids	2 to 535
Tags	His tag N-Terminus

Additional sequence information Full length mature chain without initiator methionine. N-terminal 6xHis-SUMO-tagged.

Specifications

Our [Abpromise guarantee](#) covers the use of **ab235076** in the following tested applications.

The application notes include recommended starting dilutions; optimal dilutions/concentrations should be determined by the end user.

Applications	SDS-PAGE
Form	Liquid
Additional notes	This product was previously labelled as TCP1 beta

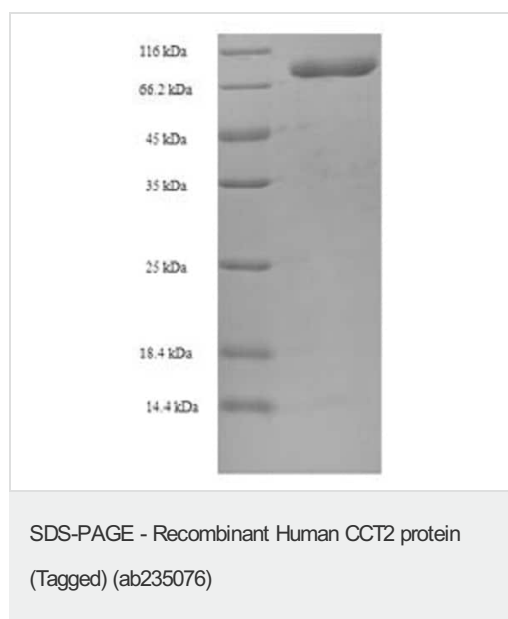
Preparation and Storage

Stability and Storage	Shipped at 4°C. Store at -20°C or -80°C. Avoid freeze / thaw cycle. Constituents: Tris buffer, 50% Glycerol (glycerin, glycerine)
------------------------------	--

General Info

Function	Molecular chaperone; assists the folding of proteins upon ATP hydrolysis. As part of the BBS/CCT complex may play a role in the assembly of BBSome, a complex involved in ciliogenesis regulating transports vesicles to the cilia. Known to play a role, in vitro, in the folding of actin and tubulin.
Sequence similarities	Belongs to the TCP-1 chaperonin family.
Cellular localization	Cytoplasm.

Images



ab235076 analyzed by (Tris-Glycine gel) discontinuous SDS-PAGE (reduced) with 5% enrichment gel and 15% separation gel.

Please note: All products are "FOR RESEARCH USE ONLY. NOT FOR USE IN DIAGNOSTIC PROCEDURES"

Our Abpromise to you: Quality guaranteed and expert technical support

- Replacement or refund for products not performing as stated on the datasheet
- Valid for 12 months from date of delivery
- Response to your inquiry within 24 hours

- We provide support in Chinese, English, French, German, Japanese and Spanish
- Extensive multi-media technical resources to help you
- We investigate all quality concerns to ensure our products perform to the highest standards

If the product does not perform as described on this datasheet, we will offer a refund or replacement. For full details of the Abpromise, please visit <https://www.abcam.com/abpromise> or contact our technical team.

Terms and conditions

- Guarantee only valid for products bought direct from Abcam or one of our authorized distributors