

Product datasheet

Recombinant Human CD18 protein ab114283

★★★★★ 1 Abreviews 1 Image

Overview

Product name	Recombinant Human CD18 protein
Protein length	Full length protein

Description

Nature	Recombinant
Source	Wheat germ
Amino Acid Sequence	
Accession	P05107
Species	Human

Sequence

```

MLGLRPPLLALVGLLSLGCVLSQECTKFKVSSCRECIE
SGPGCTWCQKLN
FTGPGDPDSIRCDTRPQLLMRGCAADDIMDPTSLAET
QEDHNGGQKQLSP
QKVTLYL R PGQAAAFNVTFRRAKGYPIDLYLMDLSYS
MLDDL RNVK KLG
GDLLRALNEITESGRIGFGSFVDKTVLPFVNTHPKLR
NPCPNKEKECQP
PFAFRHVLKLTNNSNQFQTEVGKQLISGNLDAPEGGL
DAMMQVAACPEEI
GWRNVTRLLVFATDDGFHFAGDGKLGAILTPNDGRCH
LEDNLYKRSNEFD
YPSVGQLAHKLAENNIQPIFAVTSRMVKTYEKLTEIIPKS
AVGELSESS
NVVHLIKNAYNKLSSRVFLDHNALPDTLKVTYDSFCSN
GVTHRNQPRGDC
DGVQINVPITFQVKVTATECIQEQS F VIRALGFTDIVTVQ
VLPQCECR CR
DQSRDRSLCHGKGFLECGICRCDTGYIGKNCECQTQG
RSSQELEGSCRKD
NNSIICSGLGDCVCGQCLCHTSDVPGKLIYGQYCECDTI
NCERYNGQVCG
GPGRGLCF CGKCRCHPGFEGSACQCERTTEGCLNP
RRVECSGRGRRCNV
CECHSGYQLPLCQECPGCPSPCGKYISCAECLKFEK
    
```

GPFGKNCSAACPGL
QLSNNPVKGRTCKERDSEGCWVAYTLEQQDGMDRYL
IVDESRECVAGPN
IAAVGGTVAGMLIGILLVWIKALIHLSDLREYRRFEKEK
LKSQWNND NPLFKSATTTVMNPKFAES

Molecular weight 111 kDa including tags
Amino acids 1 to 769

Specifications

Our [Abpromise guarantee](#) covers the use of **ab114283** in the following tested applications.

The application notes include recommended starting dilutions; optimal dilutions/concentrations should be determined by the end user.

Applications ELISA
SDS-PAGE
Western blot

Form Liquid

Additional notes Protein concentration is above or equal to 0.05 mg/ml.
This protein is best used within three months from the date of receipt.

Preparation and Storage

Stability and Storage Shipped on dry ice. Upon delivery aliquot and store at -80°C. Avoid freeze / thaw cycles.
pH: 8.00
Constituents: 0.79% Tris HCl, 0.3% Glutathione

General Info

Function Integrin alpha-L/beta-2 is a receptor for ICAM1, ICAM2, ICAM3 and ICAM4. Integrins alpha-M/beta-2 and alpha-X/beta-2 are receptors for the iC3b fragment of the third complement component and for fibrinogen. Integrin alpha-X/beta-2 recognizes the sequence G-P-R in fibrinogen alpha-chain. Integrin alpha-M/beta-2 recognizes P1 and P2 peptides of fibrinogen gamma chain. Integrin alpha-M/beta-2 is also a receptor for factor X. Integrin alpha-D/beta-2 is a receptor for ICAM3 and VCAM1.

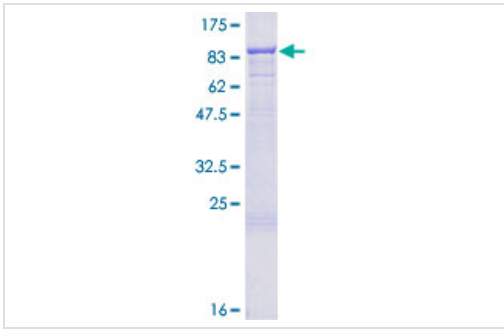
Involvement in disease Defects in ITGB2 are the cause of leukocyte adhesion deficiency type 1 (LAD1) [MIM:116920]. LAD1 patients have recurrent bacterial infections and their leukocytes are deficient in a wide range of adhesion-dependent functions.

Sequence similarities Belongs to the integrin beta chain family.
Contains 1 VWFA domain.

Post-translational modifications Both Ser-745 and Ser-756 become phosphorylated when T-cells are exposed to phorbol esters. Phosphorylation on Thr-758 (but not on Ser-756) allows interaction with 14-3-3 proteins.

Cellular localization Membrane.

Images



12.5% SDS-PAGE analysis of CD18 protein (ab114283). Stained with Coomassie Blue.

SDS-PAGE - Recombinant Human CD18 protein (ab114283)

Please note: All products are "FOR RESEARCH USE ONLY AND ARE NOT INTENDED FOR DIAGNOSTIC OR THERAPEUTIC USE"

Our Abpromise to you: Quality guaranteed and expert technical support

- Replacement or refund for products not performing as stated on the datasheet
- Valid for 12 months from date of delivery
- Response to your inquiry within 24 hours
- We provide support in Chinese, English, French, German, Japanese and Spanish
- Extensive multi-media technical resources to help you
- We investigate all quality concerns to ensure our products perform to the highest standards

If the product does not perform as described on this datasheet, we will offer a refund or replacement. For full details of the Abpromise, please visit <https://www.abcam.com/abpromise> or contact our technical team.

Terms and conditions

- Guarantee only valid for products bought direct from Abcam or one of our authorized distributors