

Product datasheet

Recombinant human CD226 protein (Active) ab219701

3 Images

Description

Product name	Recombinant human CD226 protein (Active)	
Biological activity	<p>Measured by its binding ability in a functional ELISA.</p> <p>Immobilized ab219701 at 2 µg/mL (100 µL/well) can bind Human CD155, Fc tag with a linear range of 3.3-51.2 ng/mL.</p>	
Purity	> 95 % SDS-PAGE.	
Endotoxin level	< 1.000 Eu/µg	
Expression system	HEK 293 cells	
Accession	Q15762	
Protein length	Protein fragment	
Animal free	No	
Nature	Recombinant	
Species	Human	
Sequence	<pre>EEVLWHTSVPFPAENMSLECVYPSMGILTQVEWFKIGTQQ DSIAIFSPTHG MVIRKPYAERVYFLNSTMASNNMTLFFRNASEDDVGYSC SLYTYPQGTW QKVIQVVQSDSFEAAVPSNSHMVSEPGKNVTLTCQPQMT WPVQAVRWEKI QPRQIDLLTYCNLVHGRNFTSKFPRQVSNCSHGRWSVMI PDVTVSDSG LYRCYLQASAGENETFVMRLTVAEGKTDN</pre>	
Predicted molecular weight	28 kDa including tags	
Amino acids	19 to 247	
Tags	His tag C-Terminus	
Additional sequence information	(NP_006557).	

Specifications

Our [Abpromise guarantee](#) covers the use of **ab219701** in the following tested applications.

The application notes include recommended starting dilutions; optimal dilutions/concentrations should be determined by the end user.

Applications Functional Studies

SDS-PAGE

Form Lyophilized

Preparation and Storage

Stability and Storage

Shipped at 4°C. Store at 4°C (stable for up to 12 months). Store at -20°C or -80°C. Avoid freeze / thaw cycle.

pH: 7.40

Constituent: 100% PBS

Lyophilized from 0.22 µm filtered solution.

Note: 5-10% trehalose is commonly used for freeze drying, and after reconstitution, the trehalose is mostly about 3-5%.

This product is an active protein and may elicit a biological response in vivo, handle with caution.

Reconstitution

Reconstitute with sterile deionized water to a concentration of 200 µg/ml.

General Info

Function

Receptor involved in intercellular adhesion, lymphocyte signaling, cytotoxicity and lymphokine secretion mediated by cytotoxic T-lymphocyte (CTL) and NK cell.

Tissue specificity

Expressed by peripheral blood T-lymphocytes.

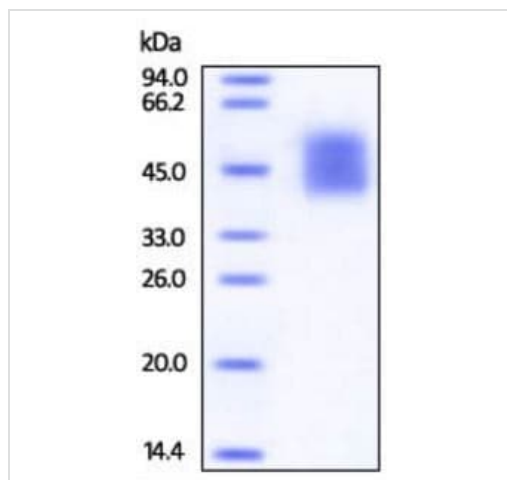
Sequence similarities

Contains 2 Ig-like C2-type (immunoglobulin-like) domains.

Cellular localization

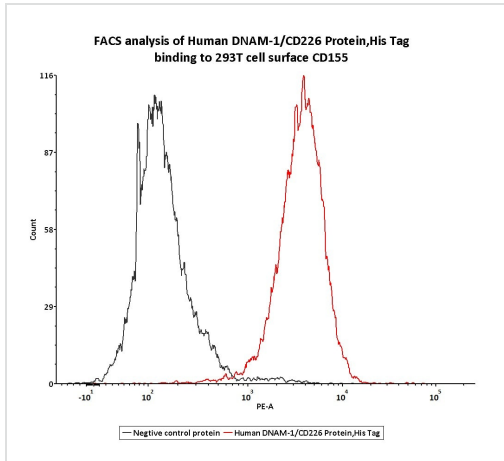
Membrane.

Images



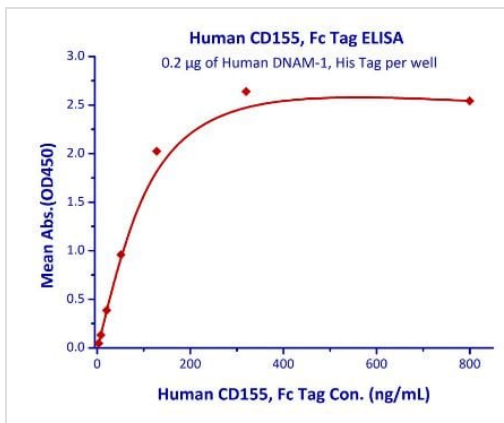
SDS-PAGE analysis of reduced ab219701 stained overnight with Coomassie Blue.

SDS-PAGE - Recombinant human CD226 protein
(Active) (ab219701)



Ab219701 at 3µg/ml can bind to 293T cell overexpressing human CD155 as determined by FACS assay.

Functional Studies - Recombinant human CD226 protein (Active) (ab219701)



Immobilized ab219701 at 2 µg/mL (100 µL/well) can bind Human CD155, Fc tag with a linear range of 3.3-51.2 ng/mL.

Functional Studies - Recombinant human CD226 protein (Active) (ab219701)

Please note: All products are "FOR RESEARCH USE ONLY. NOT FOR USE IN DIAGNOSTIC PROCEDURES"

Our Abpromise to you: Quality guaranteed and expert technical support

- Replacement or refund for products not performing as stated on the datasheet
- Valid for 12 months from date of delivery
- Response to your inquiry within 24 hours
- We provide support in Chinese, English, French, German, Japanese and Spanish
- Extensive multi-media technical resources to help you
- We investigate all quality concerns to ensure our products perform to the highest standards

If the product does not perform as described on this datasheet, we will offer a refund or replacement. For full details of the Abpromise, please visit <https://www.abcam.com/abpromise> or contact our technical team.

Terms and conditions

- Guarantee only valid for products bought direct from Abcam or one of our authorized distributors