

Product datasheet

Recombinant Human CD226 protein (Fc Chimera)
ab206028

3 Images

Description

| | | |
|--|--|--|
| Product name | Recombinant Human CD226 protein (Fc Chimera) | |
| Purity | > 95 % SDS-PAGE. | |
| Endotoxin level | < 1.000 Eu/µg | |
| Expression system | HEK 293 cells | |
| Accession | Q15762 | |
| Protein length | Protein fragment | |
| Animal free | No | |
| Nature | Recombinant | |
| Species | Human | |
| Sequence | EEVLWHTSVPF AENMSLECVYPSMGILTQVEWFKIGTQQ DSIAIFSP THG MVIRKPYAER VYFLNSTMASNNMTLFFRNA SEDDVGYSC SLYTYPQGTW QKVIQVVQSDSFEAAVPSNSHMSEPGKNVTLTCQPQMT WPVQAVRWEKI QPRQIDLLTYCNLVHGRNFTSKFPRQVSNCSHGRWSVMI PDVTVSDSGLYRCYLQASAGENETFVMRLTVAEGKTDN | |
| Predicted molecular weight | 53 kDa including tags | |
| Amino acids | 19 to 247 | |
| Additional sequence information | Fc Chimera is fused with a Human IgG1 Fc tag at the C-terminus. NP_006557. | |

Specifications

Our [Abpromise guarantee](#) covers the use of **ab206028** in the following tested applications.

The application notes include recommended starting dilutions; optimal dilutions/concentrations should be determined by the end user.

| | |
|---------------------|-------------|
| Applications | SDS-PAGE |
| Form | Lyophilized |

Preparation and Storage

Preparation and Storage

Stability and Storage

Shipped at 4°C. Store at -20°C or -80°C. Avoid freeze / thaw cycle.

pH: 7.4

Constituents: 0.61% Tris, 0.75% Glycine, Sodium chloride, L-Arginine

Lyophilized from 0.22 µm filtered solution.

5-10% trehalose is commonly used for freeze drying, and after reconstitution, the trehalose is mostly about 3-5%.

Reconstitution

Reconstitute with sterile deionized water to a concentration of 400 µg/ml.

General Info

Function

Receptor involved in intercellular adhesion, lymphocyte signaling, cytotoxicity and lymphokine secretion mediated by cytotoxic T-lymphocyte (CTL) and NK cell.

Tissue specificity

Expressed by peripheral blood T-lymphocytes.

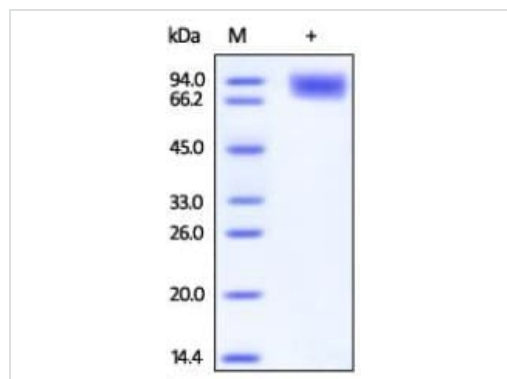
Sequence similarities

Contains 2 Ig-like C2-type (immunoglobulin-like) domains.

Cellular localization

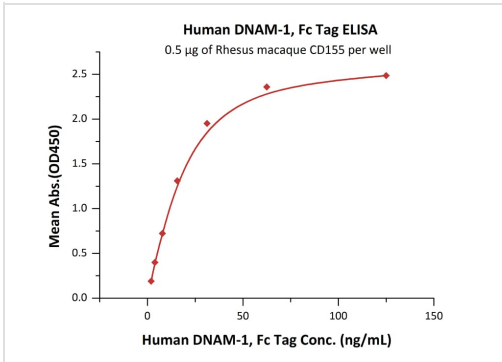
Membrane.

Images



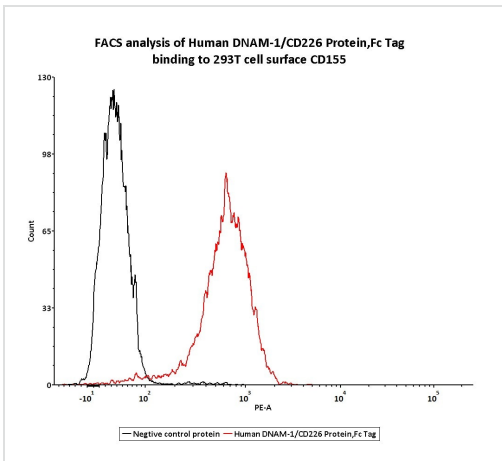
SDS-PAGE analysis of reduced ab206028, staining overnight with Coomassie Blue. DTT-reduced Protein migrates as 80-90 kDa in SDS-PAGE due to glycosylation.

SDS-PAGE - Recombinant Human CD226 protein
(Fc Chimera) (ab206028)



Immobilized Rhesus macaque CD155 at 5 µg/mL (100 µL/well) can bind ab206028 with a linear range of 2-31 ng/mL.

Functional Studies - Recombinant Human CD226 protein (Fc Chimera) (ab206028)



Ab206028 at 0.33µg/ml can bind 293T cells overexpressing human CD155.

Functional Studies - Recombinant Human CD226 protein (Fc Chimera) (ab206028)

Please note: All products are "FOR RESEARCH USE ONLY. NOT FOR USE IN DIAGNOSTIC PROCEDURES"

Our Abpromise to you: Quality guaranteed and expert technical support

- Replacement or refund for products not performing as stated on the datasheet
- Valid for 12 months from date of delivery
- Response to your inquiry within 24 hours
- We provide support in Chinese, English, French, German, Japanese and Spanish
- Extensive multi-media technical resources to help you
- We investigate all quality concerns to ensure our products perform to the highest standards

If the product does not perform as described on this datasheet, we will offer a refund or replacement. For full details of the Abpromise, please visit <https://www.abcam.com/abpromise> or contact our technical team.

Terms and conditions

- Guarantee only valid for products bought direct from Abcam or one of our authorized distributors