

Product datasheet

Recombinant human CD252 protein (Fc Chimera Active) ab206011

[3 Images](#)

Description

Product name	Recombinant human CD252 protein (Fc Chimera Active)	
Biological activity	Measured by its binding ability in a functional ELISA. The EC ₅₀ is typically 2.2-19.7 ng/mL.	
Purity	> 90 % SDS-PAGE.	
Endotoxin level	< 1.000 Eu/μg	
Expression system	HEK 293 cells	
Accession	P23510	
Protein length	Protein fragment	
Animal free	No	
Nature	Recombinant	
Species	Human	
Sequence	QVSHRYPRIQSIKVFTEYKKEKGFILTSQKEDEIMKVQ NNSVIINCDGF YLISLKGYFSQEVNISLHYQKDEEPLFQLKKVRSVNSLM VASLTYKDKVYLNVTDDNTSLDDFHVNGGEL ILIQNPGEFCVL	
Predicted molecular weight	42 kDa including tags	
Amino acids	51 to 183	
Additional sequence information	Fc Chimera is fused with a Human IgG1 Fc tag at the N-terminus. NP_003317	

Specifications

Our [Abpromise guarantee](#) covers the use of **ab206011** in the following tested applications.

The application notes include recommended starting dilutions; optimal dilutions/concentrations should be determined by the end user.

Applications	SDS-PAGE Functional Studies
Form	Lyophilised

Preparation and Storage

Stability and Storage

Shipped at 4°C. Store at -20°C or -80°C. Avoid freeze / thaw cycle.

pH: 7.50

Constituents: 0.61% Tris, 0.75% Glycine, 5% Trehalose, Sodium chloride, L-Arginine

This product is an active protein and may elicit a biological response in vivo, handle with caution.

Reconstitution

It is recommended to reconstitute the lyophilized protein in sterile deionized water to a final concentration of 400 µg/mL. Solubilize for 30 to 60 minutes at room temperature with occasional gentle mixing. Carrier protein (0.1% HSA or BSA) is strongly recommended for further dilution and long term storage.

General Info

Function

Cytokine that binds to TNFRSF4. Co-stimulates T-cell proliferation and cytokine production.

Involvement in disease

Genetic variations in TNFSF4 influence susceptibility to systemic lupus erythematosus (SLE) [MIM:152700]. SLE is a chronic, inflammatory and often febrile multisystemic disorder of connective tissue. It affects principally the skin, joints, kidneys and serosal membranes. It is thought to represent a failure of the regulatory mechanisms of the autoimmune system. Note=The upstream region of TNFSF4 contains a single risk haplotype for SLE, which is correlated with increased expression of both cell-surface TNFSF4 and TNFSF4 transcripts. Increased levels of TNFSF4 are thought to augment T cell-APC interaction and the functional consequences of T cell activation, thereby destabilizing peripheral tolerance.

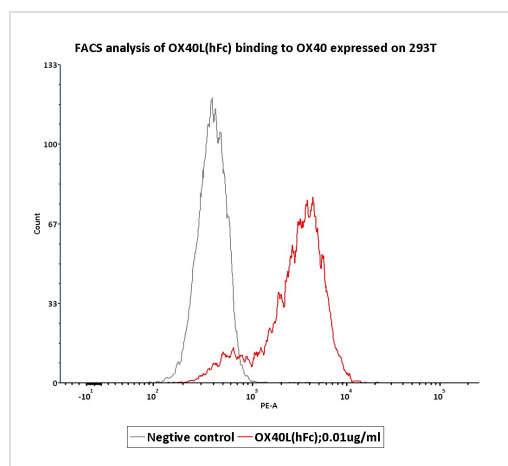
Sequence similarities

Belongs to the tumor necrosis factor family.

Cellular localization

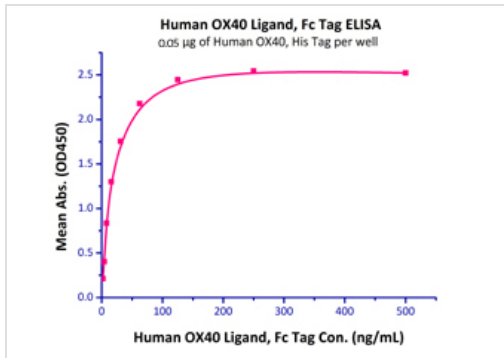
Membrane.

Images



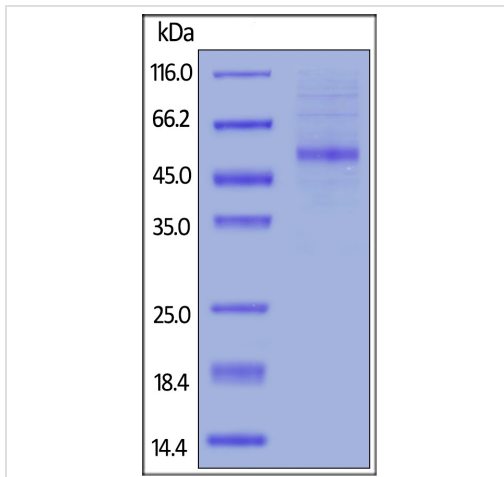
FACS assay shows that recombinant Human OX40 Ligand, Fc Tag can bind to 293T cell overexpressing human OX40. The concentration of OX40 Ligand used is 0.01 µg/ml.

Functional Studies - Recombinant human CD252 protein (Fc Chimera Active) (ab206011)



Immobilized Human OX40, His Tag at 0.5 µg/mL (100 µl/well) can bind Human OX40 Ligand, Fc Tag with a linear range of 2-15 ng/mL.

Functional Studies - Recombinant human CD252 protein (Fc Chimera Active) (ab206011)



SDS-PAGE analysis of reduced ab206011, staining overnight with Coomassie Blue. DTT-reduced Protein migrates as 53 kDa in SDS-PAGE due to glycosylation.

SDS-PAGE - Recombinant human CD252 protein (Fc Chimera Active) (ab206011)

Please note: All products are "FOR RESEARCH USE ONLY. NOT FOR USE IN DIAGNOSTIC PROCEDURES"

Our Abpromise to you: Quality guaranteed and expert technical support

- Replacement or refund for products not performing as stated on the datasheet
- Valid for 12 months from date of delivery
- Response to your inquiry within 24 hours
- We provide support in Chinese, English, French, German, Japanese and Spanish
- Extensive multi-media technical resources to help you
- We investigate all quality concerns to ensure our products perform to the highest standards

If the product does not perform as described on this datasheet, we will offer a refund or replacement. For full details of the Abpromise, please visit <https://www.abcam.com/abpromise> or contact our technical team.

Terms and conditions

- Guarantee only valid for products bought direct from Abcam or one of our authorized distributors