

Product datasheet

Recombinant human CD272/BTLA protein (Fc Chimera Active) ab219654

2 Images

Description

Product name	Recombinant human CD272/BTLA protein (Fc Chimera Active)	
Biological activity	Immobilized Human HVEM, His Tag at 5 µg/mL (100 µL/well) can bind ab219654 with a linear range of 0.02-0.625 µg/mL.	
Purity	> 92 % SDS-PAGE.	
Endotoxin level	< 1.000 Eu/µg	
Expression system	HEK 293 cells	
Accession	Q7Z6A9	
Protein length	Protein fragment	
Animal free	No	
Nature	Recombinant	
Species	Human	
Sequence	G KESCDVQLYIKRQSEHSILA GDPFELECPV KYCANRPHVT WCKLNGTTCV KLEDRQTSWK EEKNISFFIL HFEPVLPNDN GSYRCSANFQ SNLIESHSTT LYVTDVKSAS ERPSKDEMAS	
Predicted molecular weight	40 kDa including tags	
Amino acids	31 to 150	
Additional sequence information	Human CD272 fused with a Human IgG1 Fc tag at the C-terminus,	

Specifications

Our [Abpromise guarantee](#) covers the use of **ab219654** in the following tested applications.

The application notes include recommended starting dilutions; optimal dilutions/concentrations should be determined by the end user.

Applications	SDS-PAGE Functional Studies
Form	Lyophilized
Additional notes	This product was previously labelled as CD272

Preparation and Storage

Stability and Storage

Shipped at 4°C. Upon delivery aliquot. Store at -20°C long term. For long term storage it is recommended to add a carrier protein on reconstitution (0.1% HSA or BSA).

pH: 7.4

Constituents: 5% Trehalose, 0.75% Glycine, 0.61% Tris, Sodium chloride, L-Arginine

Lyophilized from 0.22 µm filtered solution.

5-10% trehalose is commonly used for freeze drying, and after reconstitution, the trehalose is mostly about 3-5%

This product is an active protein and may elicit a biological response in vivo, handle with caution.

Reconstitution

Reconstitute with sterile deionized water to a concentration of 400 µg/ml.

General Info

Function

Lymphocyte inhibitory receptor which inhibits lymphocytes during immune response.

Sequence similarities

Contains 1 Ig-like V-type (immunoglobulin-like) domain.

Post-translational modifications

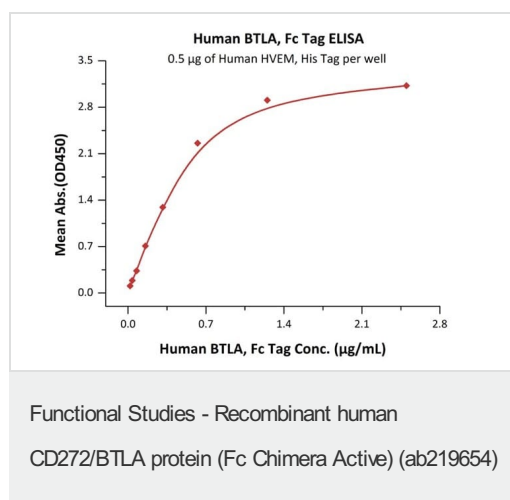
Phosphorylated on Tyr residues by TNFRSF14 and by antigen receptors cross-linking, both inducing association with PTPN6 and PTPN11.

N-glycosylated.

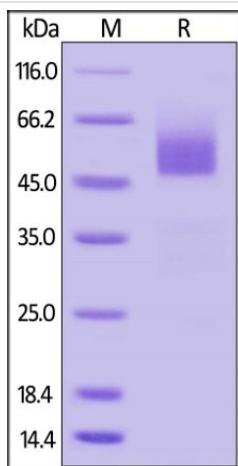
Cellular localization

Membrane.

Images



Immobilized Human HVEM, His Tag at 5 µg/mL (100 µL/well) can bind ab219654 with a linear range of 0.02 -0.625 µg/mL.



SDS-PAGE - Recombinant human CD272/BTLA protein (Fc Chimera Active) (ab219654)

SDS-PAGE under reducing (R) conditions using ab219654. The gel was stained overnight with Coomassie Blue. The purity of the protein is greater than 92%. The reduced protein migrates as 46-66 kDa in SDS-PAGE due to glycosylation

Please note: All products are "FOR RESEARCH USE ONLY. NOT FOR USE IN DIAGNOSTIC PROCEDURES"

Our Abpromise to you: Quality guaranteed and expert technical support

- Replacement or refund for products not performing as stated on the datasheet
- Valid for 12 months from date of delivery
- Response to your inquiry within 24 hours
- We provide support in Chinese, English, French, German, Japanese and Spanish
- Extensive multi-media technical resources to help you
- We investigate all quality concerns to ensure our products perform to the highest standards

If the product does not perform as described on this datasheet, we will offer a refund or replacement. For full details of the Abpromise, please visit <https://www.abcam.com/abpromise> or contact our technical team.

Terms and conditions

- Guarantee only valid for products bought direct from Abcam or one of our authorized distributors