

Product datasheet

Recombinant human CD39 protein (Active) ab271430

2 Images

Description

Product name	Recombinant human CD39 protein (Active)	
Biological activity	Specific activity ≥ 3000 pmol/min/ μ g. Colorimetric ATP hydrolysis assay.	
Purity	≥ 90 % SDS-PAGE.	
Expression system	HEK 293 cells	
Accession	P49961	
Protein length	Protein fragment	
Animal free	No	
Nature	Recombinant	
Species	Human	
Sequence	<p>MEDTKESNVK TFC SKNILAI LGFSSIIAVI ALLAVGLTQN KALPENVKYG MLDAGSSHT SLYYKWPAE KENDTGVVHQ VEECRVKGPG ISKFVQKVNE IGYLTDCME RAREVIPRSQ HQETPVYLGA TAGMRLLRME SEELADRVLD VVERSLSNYP FDFQGARIIT GQEEGAYGWI TINYLLGKFS QKTRWFSMP YETNNQETFG ALDLGGASTQ VTFVPQNQTI ESPDNALQFR LYGKDYNVYT HSFLCYGKDQ ALWQKLAKDI QVASNEILRD PCFHPGYKKV VNVSDLYKTP CTKRFEMTLP FQQFEIQGIG NYQQCHQSIL ELFNTSYCPY SQCAFNGIFL PPLQGDFGAF SAFYFVMKFL NLTSEKVSQE KVTEMMKKFC AQPWEEIKTS YAGVKEKYL S EYCFSGTYL SLLLQGYHFT ADSWEIHFI GKIQGSDAGW TLGYMLNLTN MIPAEQPLST PLSHSTYVFL MVLFSVLVFT VAIIGLLIFH KPSYFWKDMV</p>	
Predicted molecular weight	51 kDa including tags	
Molecular weight information	Protein runs at a higher MW than predicted on SDS-PAGE due to glycosylation.	
Amino acids	38 to 478	
Tags	His tag C-Terminus	
Additional sequence information	Genbank: NM_001776	

Specifications

Our [Abpromise guarantee](#) covers the use of **ab271430** in the following tested applications.

The application notes include recommended starting dilutions; optimal dilutions/concentrations should be determined by the end user.

Applications	Functional Studies SDS-PAGE
Form	Liquid

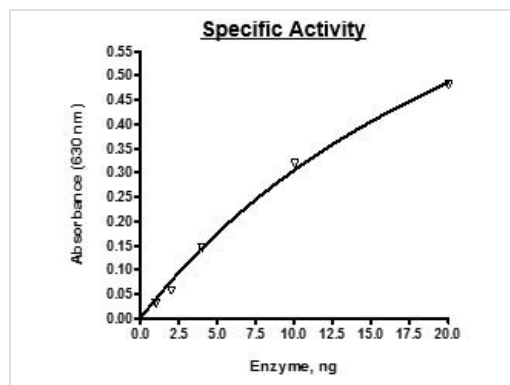
Preparation and Storage

Stability and Storage	Shipped on Dry Ice. Store at -80°C. Avoid freeze / thaw cycle. pH: 7.4 Constituents: 0.13% Sodium phosphate, 0.64% Sodium chloride, 0.02% Potassium chloride, 20% Glycerol (glycerin, glycerine) This product is an active protein and may elicit a biological response in vivo, handle with caution.
------------------------------	--

General Info

Function	In the nervous system, could hydrolyze ATP and other nucleotides to regulate purinergic neurotransmission. Could also be implicated in the prevention of platelet aggregation. Hydrolyzes ATP and ADP equally well.
Tissue specificity	Expressed primarily on activated lymphoid cells. Also expressed in endothelial tissues. The vascular isoform and the placental isoform II are present in both placenta and umbilical vein, whereas placental isoform I is present in placenta only.
Sequence similarities	Belongs to the GDA1/CD39 NTPase family.
Post-translational modifications	The N-terminus is blocked. Palmitoylated in the N-terminal part.
Cellular localization	Membrane.

Images



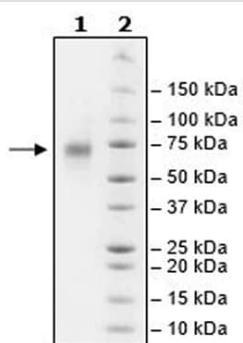
Functional analysis of ab271430.

Specific activity ≥ 3000 pmol/min/ μ g.

Colorimetric ATP hydrolysis assay.

Functional Studies - Recombinant Human CD39 protein (Tagged) (ab271430)

SDS-PAGE analysis of ab271430.



SDS-PAGE - Recombinant Human CD39 protein
(Tagged) (ab271430)

Please note: All products are "FOR RESEARCH USE ONLY. NOT FOR USE IN DIAGNOSTIC PROCEDURES"

Our Abpromise to you: Quality guaranteed and expert technical support

- Replacement or refund for products not performing as stated on the datasheet
- Valid for 12 months from date of delivery
- Response to your inquiry within 24 hours
- We provide support in Chinese, English, French, German, Japanese and Spanish
- Extensive multi-media technical resources to help you
- We investigate all quality concerns to ensure our products perform to the highest standards

If the product does not perform as described on this datasheet, we will offer a refund or replacement. For full details of the Abpromise, please visit <https://www.abcam.com/abpromise> or contact our technical team.

Terms and conditions

- Guarantee only valid for products bought direct from Abcam or one of our authorized distributors