

Product datasheet

Recombinant human CD40 protein (Active) (Biotin)  
 ab271432

2 Images

Description

<b>Product name</b>	Recombinant human CD40 protein (Active) (Biotin)	
<b>Biological activity</b>	Active in a CD40:CD40L binding assay.	
<b>Purity</b>	>= 90 % SDS-PAGE. Aggregation state <10%.	
<b>Endotoxin level</b>	< 1.000 Eu/µg	
<b>Expression system</b>	HEK 293 cells	
<b>Accession</b>	<a href="#">P25942</a>	
<b>Protein length</b>	Protein fragment	
<b>Animal free</b>	No	
<b>Nature</b>	Recombinant	
<b>Species</b>	Human	
<b>Sequence</b>	EPPTACREKQ YLINSQCCSL CQPGQKLVSD CTEFTETECL PCGESEFLDT WNRETHCHQH KYCDPNLGLR VQQKGTSETD TICTCEEGWH CTSEACESCV LHRSCSPGFG VKQIATGVSD TICEPCVGF FSNVSSAFEK CHPWTSCETK DLVVQQAGTN KTDVVC GPQD RLR	
<b>Predicted molecular weight</b>	48 kDa	
<b>Amino acids</b>	21 to 193	
<b>Tags</b>	Avi tag C-Terminus , Fc tag C-Terminus	
<b>Additional sequence information</b>	Fc portion of Human IgG1. Genbank: NM_001250	
<b>Conjugation</b>	Biotin	

Specifications

Our [Abpromise guarantee](#) covers the use of **ab271432** in the following tested applications.

The application notes include recommended starting dilutions; optimal dilutions/concentrations should be determined by the end user.

<b>Applications</b>	Functional Studies
	SDS-PAGE

<b>Form</b>	Liquid
<b>Additional notes</b>	Enzymatically biotin-labeled using Avi-tag™ technology

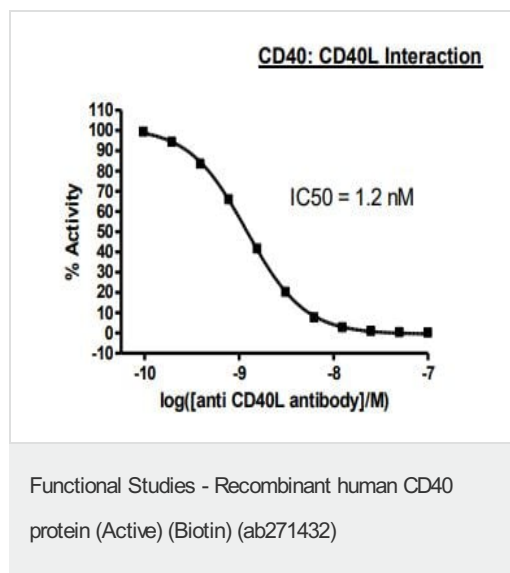
## Preparation and Storage

<b>Stability and Storage</b>	Shipped on Dry Ice. Store at -80°C. Avoid freeze / thaw cycle. Store In the Dark. pH: 7.40 Constituents: 0.13% Sodium phosphate, 0.64% Sodium chloride, 0.02% Potassium chloride, 20% Glycerol (glycerin, glycerine) This product is an active protein and may elicit a biological response in vivo, handle with caution.
------------------------------	--

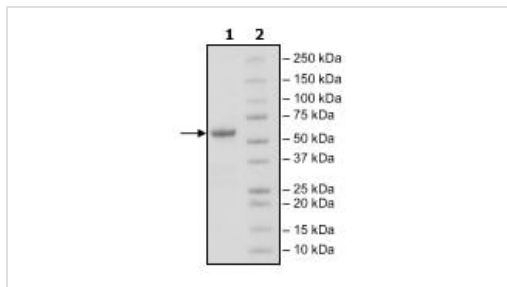
## General Info

<b>Function</b>	Receptor for TNFSF5/CD40LG.
<b>Tissue specificity</b>	B-cells and in primary carcinomas.
<b>Involvement in disease</b>	Defects in CD40 are the cause of hyper-IgM immunodeficiency syndrome type 3 (HIGM3) [MIM:606843]; also known as hyper-IgM syndrome 3. HIGM3 is an autosomal recessive disorder which includes an inability of B cells to undergo isotype switching, one of the final differentiation steps in the humoral immune system, an inability to mount an antibody-specific immune response, and a lack of germinal center formation.
<b>Sequence similarities</b>	Contains 4 TNFR-Cys repeats.
<b>Cellular localization</b>	Secreted and Cell membrane.

## Images



Functional analysis of ab271432 in a CD40:CD40L binding assay.



SDS-PAGE analysis of ab271432.

SDS-PAGE - Recombinant Human CD40 protein  
(Tagged) (Biotin) (ab271432)

**Please note:** All products are "FOR RESEARCH USE ONLY. NOT FOR USE IN DIAGNOSTIC PROCEDURES"

### Our Abpromise to you: Quality guaranteed and expert technical support

---

- Replacement or refund for products not performing as stated on the datasheet
- Valid for 12 months from date of delivery
- Response to your inquiry within 24 hours
- We provide support in Chinese, English, French, German, Japanese and Spanish
- Extensive multi-media technical resources to help you
- We investigate all quality concerns to ensure our products perform to the highest standards

If the product does not perform as described on this datasheet, we will offer a refund or replacement. For full details of the Abpromise, please visit <https://www.abcam.com/abpromise> or contact our technical team.

### Terms and conditions

---

- Guarantee only valid for products bought direct from Abcam or one of our authorized distributors