

Product datasheet

Recombinant Human CDKL1 protein ab167944

1 Image

Overview

Product name	Recombinant Human CDKL1 protein
Protein length	Full length protein

Description

Nature	Recombinant
Source	Baculovirus infected Sf9 cells

Amino Acid Sequence

Species	Human
----------------	-------

Sequence

MMEKYEKIGK IGEGSYGVVF KCRNRDTGQI
 VAIKKFLESE DDPVIKKIAL REIRMLKQLK
 HPNLVNLLEV FRRKRRLHLV FEYCDHTVLH
 ELDYRQGVV EHLVKSITWQ TLQAVNFCHK
 HNCIHRDVKP ENILTKHSV IKLCDFGFAR
 LLTGPSDYIT DYVATRKYRS PELLVGDTQY
 GPPVDVWAIG CVFAELLSGV PLWPGKSDVD
 QLYLIRKTLG DLIPRHQQVF STNQYFSGVK
 IPDPEDMEPL ELKFPNISYP ALGLLKGCLH
 MDPTQRLTCE QLLHHPYFEN IREIEDLAKE
 HNKPTRKTLR KSRKHHCFTS TSKLQYLPQL
 TGSSILPALD NKKYYCDTKK LNYRFPNI

Molecular weight	60 kDa including tags
Amino acids	1 to 358
Tags	proprietary tag N-Terminus

Specifications

Our [Abpromise guarantee](#) covers the use of **ab167944** in the following tested applications.

The application notes include recommended starting dilutions; optimal dilutions/concentrations should be determined by the end user.

Applications	SDS-PAGE
	Western blot

Purity	> 80 % Densitometry.
---------------	----------------------

Form Liquid

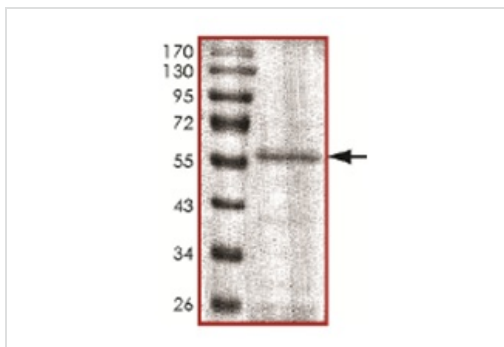
Preparation and Storage

Stability and Storage Shipped on dry ice. Upon delivery aliquot and store at -80°C. Avoid freeze / thaw cycles.
pH: 7.50
Constituents: 0.31% Glutathione, 0.002% PMSF, 0.004% DTT, 0.79% Tris HCl, 0.004% EDTA, 25% Glycerol, 0.29% Sodium chloride

General Info

Tissue specificity Highly expressed in kidney, and to a lower extent in ovary.
Sequence similarities Belongs to the protein kinase superfamily. CMGC Ser/Thr protein kinase family. CDC2/CDKX subfamily.
Contains 1 protein kinase domain.
Domain The [NKR]KIAxRE motif seems to be a cyclin-binding region.
Cellular localization Cytoplasm. Nucleus.

Images



SDS Page analysis of ab167944

SDS-PAGE - Recombinant Human CDKL1 protein
(ab167944)

Please note: All products are "FOR RESEARCH USE ONLY AND ARE NOT INTENDED FOR DIAGNOSTIC OR THERAPEUTIC USE"

Our Abpromise to you: Quality guaranteed and expert technical support

- Replacement or refund for products not performing as stated on the datasheet
- Valid for 12 months from date of delivery
- Response to your inquiry within 24 hours
- We provide support in Chinese, English, French, German, Japanese and Spanish
- Extensive multi-media technical resources to help you

- We investigate all quality concerns to ensure our products perform to the highest standards

If the product does not perform as described on this datasheet, we will offer a refund or replacement. For full details of the Abpromise, please visit <https://www.abcam.com/abpromise> or contact our technical team.

Terms and conditions

- Guarantee only valid for products bought direct from Abcam or one of our authorized distributors