

Product datasheet

Recombinant human CECR2 protein (Active) ab196136

[2 Images](#)

Description

Product name	Recombinant human CECR2 protein (Active)	
Purity	> 95 % SDS-PAGE.	
Expression system	Escherichia coli	
Accession	Q9BXF3	
Protein length	Protein fragment	
Animal free	No	
Nature	Recombinant	
Species	Human	
Sequence	MHHHHHHTKDLFELDDDFDTAMYKVLDVVKAHKDSWP FLEPVDESYAPNYY QIIKAPMDISSMEKKLNGGLYCTKEEFVNDMKTMRNC RKYNGESSEYTK MSDNLERCFHRAMMKHFPGED	
Predicted molecular weight	14 kDa including tags	
Amino acids	430 to 543	
Tags	His tag N-Terminus	

Specifications

Our [Abpromise guarantee](#) covers the use of **ab196136** in the following tested applications.

The application notes include recommended starting dilutions; optimal dilutions/concentrations should be determined by the end user.

Applications	SDS-PAGE
	Functional Studies
Form	Liquid

Preparation and Storage

Stability and Storage	Shipped on Dry Ice. Store at -80°C. Avoid freeze / thaw cycle.
	pH: 8.00
	Constituents: 0.64% Sodium chloride, 0.02% Potassium chloride, 0.04% Tween, 20% Glycerol, 0.48% Tris

This product is an active protein and may elicit a biological response in vivo, handle with caution.

General Info

Function

Part of the CERF (CECR2-containing-remodeling factor) complex, which facilitates the perturbation of chromatin structure in an ATP-dependent manner. May be involved through its interaction with LRPPRC in the integration of cytoskeletal network with vesicular trafficking, nucleocytoplasmic shuttling, transcription, chromosome remodeling and cytokinesis.

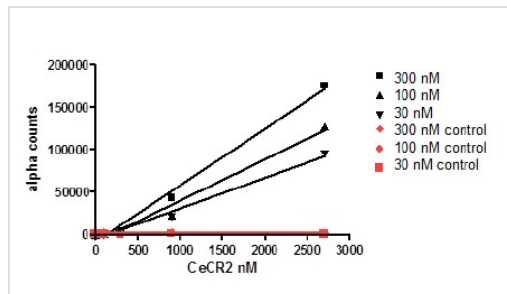
Tissue specificity

Highly expressed in skeletal muscle, thymus, placenta and lung. Expressed at lower level in brain, heart, colon, spleen, kidney.

Sequence similarities

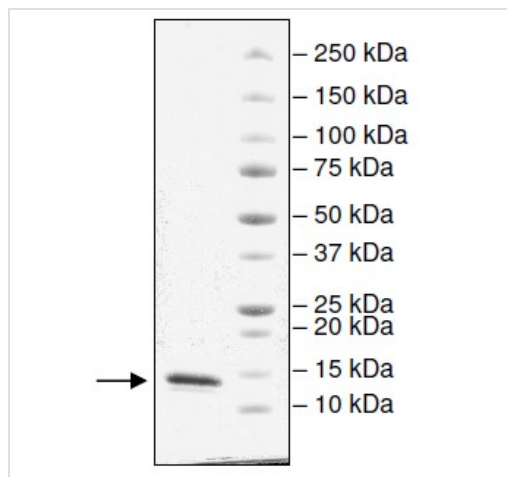
Contains 1 bromo domain.

Images



Example data obtained using ab196136.

Functional Studies - Recombinant human CECR2 protein (Active) (ab196136)



4-20% SDS-PAGE analysis of 3.2 µg ab196136 with Coomassie staining.

SDS-PAGE - Recombinant human CECR2 protein (Active) (ab196136)

Please note: All products are "FOR RESEARCH USE ONLY. NOT FOR USE IN DIAGNOSTIC PROCEDURES"

Our Abpromise to you: Quality guaranteed and expert technical support

- Replacement or refund for products not performing as stated on the datasheet
- Valid for 12 months from date of delivery
- Response to your inquiry within 24 hours

- We provide support in Chinese, English, French, German, Japanese and Spanish
- Extensive multi-media technical resources to help you
- We investigate all quality concerns to ensure our products perform to the highest standards

If the product does not perform as described on this datasheet, we will offer a refund or replacement. For full details of the Abpromise, please visit <https://www.abcam.com/abpromise> or contact our technical team.

Terms and conditions

- Guarantee only valid for products bought direct from Abcam or one of our authorized distributors