

Product datasheet

Recombinant Human CENPH protein (denatured)  
ab113134

1 Image

Description

<b>Product name</b>	Recombinant Human CENPH protein (denatured)	
<b>Purity</b>	> 90 % SDS-PAGE. ab113134 was denatured using detergent during a conventional chromatography purification process.	
<b>Expression system</b>	Escherichia coli	
<b>Accession</b>	<a href="#">Q9H3R5</a>	
<b>Protein length</b>	Protein fragment	
<b>Animal free</b>	No	
<b>Nature</b>	Recombinant	
<b>Species</b>	Human	
<b>Sequence</b>	<b>MGSSHHHHHHSSGLVPRGSHMLNKLIMKSQQESWD</b> <b>LEEKLLDIRKKRL</b> <b>QLKQASESKLLEIQTEKNKQKIDLDSEMSERIKIIRQNL</b> <b>QMEIK ITT</b> <b>VIQHVFNQLILGSKVNWAEDPALKEIVLQLEKNVDM</b>	
<b>Predicted molecular weight</b>	16 kDa including tags	
<b>Amino acids</b>	136 to 247	
<b>Tags</b>	His tag N-Terminus	
<b>Description</b>	Recombinant Human CENPH protein	

Specifications

Our [Abpromise guarantee](#) covers the use of **ab113134** in the following tested applications.

The application notes include recommended starting dilutions; optimal dilutions/concentrations should be determined by the end user.

**Applications** SDS-PAGE

**Form** Liquid

Preparation and Storage

## Stability and Storage

Shipped at 4°C. Store at +4°C short term (1-2 weeks). Upon delivery aliquot. Store at -20°C or -80°C. Avoid freeze / thaw cycle.

pH: 8.00

Constituents: 0.32% Tris HCl, 10% Glycerol

## General Info

---

### Function

Component of the CENPA-NAC (nucleosome-associated) complex, a complex that plays a central role in assembly of kinetochore proteins, mitotic progression and chromosome segregation. The CENPA-NAC complex recruits the CENPA-CAD (nucleosome distal) complex and may be involved in incorporation of newly synthesized CENPA into centromeres. Required for chromosome congression and efficiently align the chromosomes on a metaphase plate.

### Sequence similarities

Belongs to the centromere protein H family.

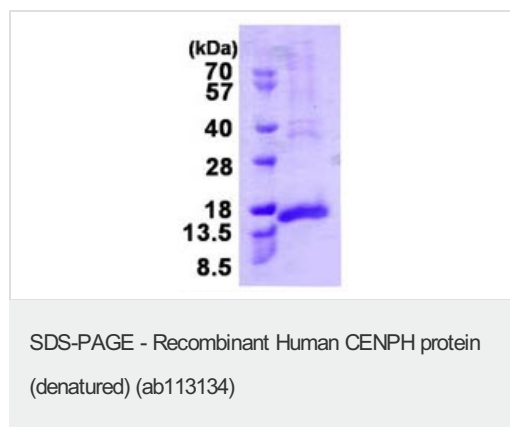
### Cellular localization

Nucleus. Chromosome > centromere > kinetochore. Associates with active centromere-kinetochore complexes throughout the cell cycle. Colocalizes with inner kinetochore plate proteins CENPA and CENPC1 during both interphase and metaphase.

---

## Images

---



15% SDS-PAGE analysis of 3 µg ab113134.

**Please note:** All products are "FOR RESEARCH USE ONLY. NOT FOR USE IN DIAGNOSTIC PROCEDURES"

## Our Abpromise to you: Quality guaranteed and expert technical support

---

- Replacement or refund for products not performing as stated on the datasheet
- Valid for 12 months from date of delivery
- Response to your inquiry within 24 hours
- We provide support in Chinese, English, French, German, Japanese and Spanish
- Extensive multi-media technical resources to help you
- We investigate all quality concerns to ensure our products perform to the highest standards

If the product does not perform as described on this datasheet, we will offer a refund or replacement. For full details of the Abpromise, please visit <https://www.abcam.com/abpromise> or contact our technical team.

## Terms and conditions

---

- Guarantee only valid for products bought direct from Abcam or one of our authorized distributors