

Product datasheet

Recombinant Human Ceramide glucosyltransferase protein ab152785

1 Image

Description

Product name	Recombinant Human Ceramide glucosyltransferase protein	
Expression system	Wheat germ	
Accession	Q16739	
Protein length	Protein fragment	
Animal free	No	
Nature	Recombinant	
Species	Human	
Sequence	TRLHLNKKATDKQPYSKLPGVSLKPLKGVDPNLINLET FELDYPKYE VLLCVQDHDDPAIDVCKKLLGKYPNVDARLFIGGKKVGIN PKINNLMPG	
Predicted molecular weight	37 kDa including tags	
Amino acids	33 to 131	

Specifications

Our [Abpromise guarantee](#) covers the use of **ab152785** in the following tested applications.

The application notes include recommended starting dilutions; optimal dilutions/concentrations should be determined by the end user.

Applications	ELISA Western blot SDS-PAGE
Form	Liquid
Additional notes	Protein concentration is above or equal to 0.05 mg/µl.

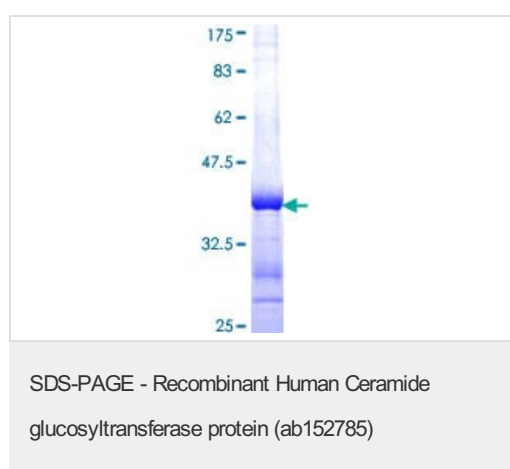
Preparation and Storage

Stability and Storage	Shipped on dry ice. Upon delivery aliquot and store at -80°C. Avoid freeze / thaw cycles. pH: 8.00 Constituents: 0.31% Glutathione, 0.79% Tris HCl
------------------------------	--

General Info

Function	Catalyzes the first glycosylation step in glycosphingolipid biosynthesis, the transfer of glucose to ceramide. May also serve as a "flippase".
Tissue specificity	Found in all tissues examined.
Pathway	Lipid metabolism; sphingolipid metabolism.
Sequence similarities	Belongs to the glycosyltransferase 2 family.
Cellular localization	Golgi apparatus membrane.

Images



12.5% SDS-PAGE showing ab152785 stained with Coomassie Blue.

Please note: All products are "FOR RESEARCH USE ONLY. NOT FOR USE IN DIAGNOSTIC PROCEDURES"

Our Abpromise to you: Quality guaranteed and expert technical support

- Replacement or refund for products not performing as stated on the datasheet
- Valid for 12 months from date of delivery
- Response to your inquiry within 24 hours

- We provide support in Chinese, English, French, German, Japanese and Spanish
- Extensive multi-media technical resources to help you
- We investigate all quality concerns to ensure our products perform to the highest standards

If the product does not perform as described on this datasheet, we will offer a refund or replacement. For full details of the Abpromise, please visit <https://www.abcam.com/abpromise> or contact our technical team.

Terms and conditions

- Guarantee only valid for products bought direct from Abcam or one of our authorized distributors