

Product datasheet

# Recombinant Human Ceramide synthase 1/LAG1 protein ab161119

1 Image

Overview

---

<b>Product name</b>	Recombinant Human Ceramide synthase 1/LAG1 protein
<b>Protein length</b>	Protein fragment

Description

---

<b>Nature</b>	Recombinant
<b>Source</b>	Wheat germ
<b>Amino Acid Sequence</b>	
<b>Species</b>	Human
<b>Sequence</b>	YVAFAAKVLGTGQVHELKDLREYDTAEASLQSKPSKAEK PLRNLVKDKRF
<b>Amino acids</b>	301 to 350
<b>Tags</b>	GST tag N-Terminus

Specifications

---

Our [Abpromise guarantee](#) covers the use of **ab161119** in the following tested applications. The application notes include recommended starting dilutions; optimal dilutions/concentrations should be determined by the end user.

<b>Applications</b>	ELISA Western blot
<b>Form</b>	Liquid
<b>Additional notes</b>	Protein concentration is above or equal to 0.05 mg/ml. This product was previously labelled as Ceramide synthase 1

Preparation and Storage

---

<b>Stability and Storage</b>	Shipped on dry ice. Upon delivery aliquot and store at -80°C. Avoid freeze / thaw cycles. pH: 8.00
------------------------------	---

Constituents: 0.31% Glutathione, 0.79% Tris HCl

## General Info

---

### Function

May be either a bona fide (dihydro)ceramide synthase or a modulator of its activity. When overexpressed in cells is involved in the production of sphingolipids containing mainly one fatty acid donor (N-linked stearyl- (C18) ceramide) in a fumonisin B1-independent manner.

### Sequence similarities

Contains 1 TLC (TRAM/LAG1/CLN8) domain.

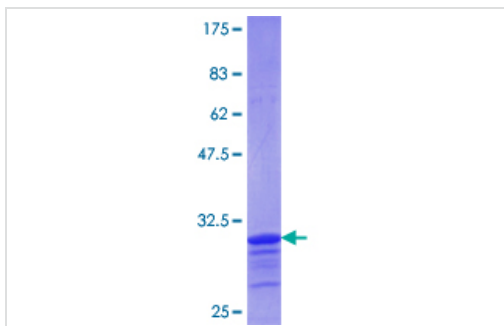
### Cellular localization

Endoplasmic reticulum membrane and Endoplasmic reticulum membrane. Golgi apparatus membrane. Isoform 1 may recycle from the Golgi to the endoplasmic reticulum.

---

## Images

---



ab161119 on a 12.5% SDS-PAGE stained with Coomassie Blue.

SDS-PAGE - Recombinant Human Ceramide synthase 1/LAG1 protein (ab161119)

**Please note:** All products are "FOR RESEARCH USE ONLY. NOT FOR USE IN DIAGNOSTIC PROCEDURES"

## Our Abpromise to you: Quality guaranteed and expert technical support

---

- Replacement or refund for products not performing as stated on the datasheet
- Valid for 12 months from date of delivery
- Response to your inquiry within 24 hours
- We provide support in Chinese, English, French, German, Japanese and Spanish
- Extensive multi-media technical resources to help you
- We investigate all quality concerns to ensure our products perform to the highest standards

If the product does not perform as described on this datasheet, we will offer a refund or replacement. For full details of the Abpromise, please visit <https://www.abcam.com/abpromise> or contact our technical team.

## Terms and conditions

---

- Guarantee only valid for products bought direct from Abcam or one of our authorized distributors