

Product datasheet

Recombinant Human CHRAC-17 protein (His tag)
 ab156724

1 Image

Description

Product name	Recombinant Human CHRAC-17 protein (His tag)
Purity	> 90 % SDS-PAGE. ab156724 is purified using conventional chromatography techniques (anion-exchange chromatography (DEAE sepharose resin) and gel-filtration chromatography (Sephacryl S-200) with 20mM Tris pH 7.5, 2mM EDTA).
Expression system	Escherichia coli
Accession	Q9NRF9
Protein length	Full length protein
Animal free	No
Nature	Recombinant
Species	Human
Sequence	<pre> MGSSHHHHHH SSGLVPRGSH MGSM AERPED LNL PNAVITR I I KEALPDGV NISKEARSAI SRAASVFLVY ATSCANNFAM KGKRKTLNAS DVLSAMEEME FQRFVTPLKE ALEAYRREQK GKKEASEQKK KDKDKKTDSE EQDKSRDEDN DEDEERLEEE EQNEEEVVDN </pre>
Predicted molecular weight	19 kDa including tags
Amino acids	1 to 147
Tags	His tag N-Terminus

Specifications

Our [Abpromise guarantee](#) covers the use of **ab156724** in the following tested applications.

The application notes include recommended starting dilutions; optimal dilutions/concentrations should be determined by the end user.

Applications	SDS-PAGE Mass Spectrometry
Mass spectrometry	MALDI-TOF
Form	Liquid

Additional notes

Protein previously known as DNA Polymerase epsilon.

Preparation and Storage**Stability and Storage**

Shipped at 4°C. Store at +4°C short term (1-2 weeks). Upon delivery aliquot. Store at -20°C or -80°C. Avoid freeze / thaw cycle.

pH: 8.00

Constituents: 0.02% DTT, 0.32% Tris HCl, 20% Glycerol (glycerin, glycerine), 1.17% Sodium chloride

General Info**Function**

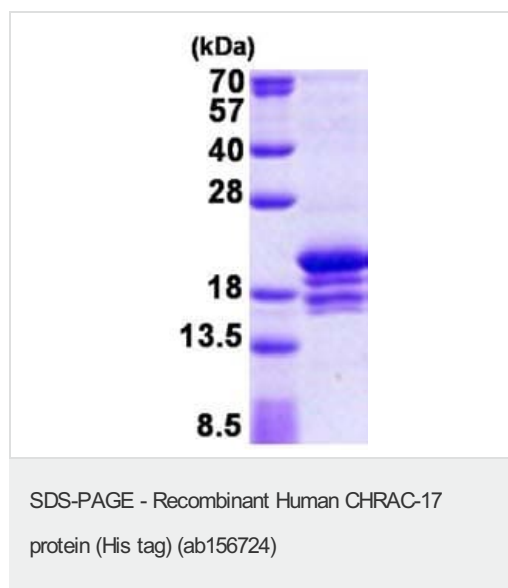
Forms a complex with DNA polymerase epsilon subunit CHRAC1 and binds naked DNA, which is then incorporated into chromatin, aided by the nucleosome-remodeling activity of ISWI/SNF2H and ACF1.

Tissue specificity

Expressed in all tissues tested, including, heart, brain, placenta, lung, liver, skeletal muscle, kidney and pancreas.

Cellular localization

Nucleus.

Images

15% SDS-PAGE analysis of ab156724 (3 µg).

Please note: All products are "FOR RESEARCH USE ONLY. NOT FOR USE IN DIAGNOSTIC PROCEDURES"

Our Abpromise to you: Quality guaranteed and expert technical support

- Replacement or refund for products not performing as stated on the datasheet
- Valid for 12 months from date of delivery
- Response to your inquiry within 24 hours

- We provide support in Chinese, English, French, German, Japanese and Spanish
- Extensive multi-media technical resources to help you
- We investigate all quality concerns to ensure our products perform to the highest standards

If the product does not perform as described on this datasheet, we will offer a refund or replacement. For full details of the Abpromise, please visit <https://www.abcam.com/abpromise> or contact our technical team.

Terms and conditions

- Guarantee only valid for products bought direct from Abcam or one of our authorized distributors