

Product datasheet

Recombinant Human Claudin 3 protein ab114332

1 Image

Description

Product name	Recombinant Human Claudin 3 protein	
Expression system	Wheat germ	
Accession	O15551	
Protein length	Full length protein	
Animal free	No	
Nature	Recombinant	
Species	Human	
Sequence	MSMGLEITGTALAVLGWLGTVCCALPMWRVSAFIGSNIITS QNIWEGLW MNCVVQSTGQMCKVYDSSLALPQDLQAARALIVAILLA AFGLLVALVG AQCTNCVQDDTAKAKITIVAGVLFLLAALLTLVPVSW SANT IIRDFYNPV VPEAQKREMGAGLYVGWAAAALQLLGGALLCCSCPPRE KKYTATKVVYSA PRSTGPGASLGTGYDRKDYV	
Predicted molecular weight	50 kDa including tags	
Amino acids	1 to 220	

Specifications

Our [Abpromise guarantee](#) covers the use of **ab114332** in the following tested applications.

The application notes include recommended starting dilutions; optimal dilutions/concentrations should be determined by the end user.

Applications	Western blot
	ELISA
	SDS-PAGE
Form	Liquid

Preparation and Storage

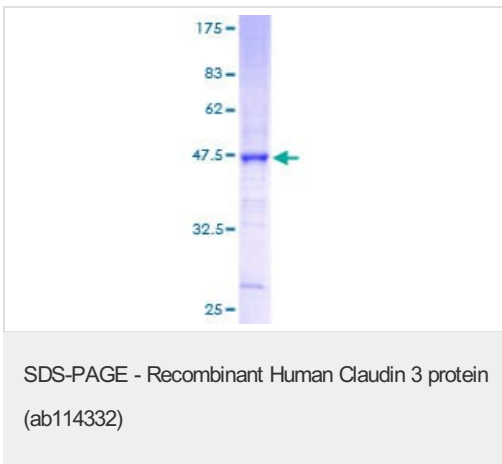
Stability and Storage	Shipped on dry ice. Upon delivery aliquot and store at -80°C. Avoid freeze / thaw cycles. pH: 8.00
------------------------------	---

Constituents: 0.3% Glutathione, 0.79% Tris HCl

General Info

Function	Plays a major role in tight junction-specific obliteration of the intercellular space, through calcium-independent cell-adhesion activity.
Involvement in disease	Note=CLDN3 is located in the Williams-Beuren syndrome (WBS) critical region. WBS results from a hemizygous deletion of several genes on chromosome 7q11.23, thought to arise as a consequence of unequal crossing over between highly homologous low-copy repeat sequences flanking the deleted region.
Sequence similarities	Belongs to the claudin family.
Cellular localization	Cell junction > tight junction. Cell membrane.

Images



ab114332 analysed on a 12.5% SDS-PAGE gel stained with Coomassie Blue.

Please note: All products are "FOR RESEARCH USE ONLY. NOT FOR USE IN DIAGNOSTIC PROCEDURES"

Our Abpromise to you: Quality guaranteed and expert technical support

- Replacement or refund for products not performing as stated on the datasheet
- Valid for 12 months from date of delivery
- Response to your inquiry within 24 hours
- We provide support in Chinese, English, French, German, Japanese and Spanish
- Extensive multi-media technical resources to help you
- We investigate all quality concerns to ensure our products perform to the highest standards

If the product does not perform as described on this datasheet, we will offer a refund or replacement. For full details of the Abpromise, please visit <https://www.abcam.com/abpromise> or contact our technical team.

Terms and conditions

- Guarantee only valid for products bought direct from Abcam or one of our authorized distributors