

Product datasheet

Recombinant Human Claudin 5 protein ab152754

1 Image

Overview

<b>Product name</b>	Recombinant Human Claudin 5 protein
<b>Protein length</b>	Full length protein

Description

<b>Nature</b>	Recombinant
<b>Source</b>	Wheat germ
<b>Amino Acid Sequence</b>	
<b>Accession</b>	<a href="#">O00501</a>
<b>Species</b>	Human
<b>Sequence</b>	<p>MGSAALEILGLVLCLVGGGLILACGLPMWQVTAFLD            HNIVTAQTTWKGL            WMSCVVQSTGHMQCKVYDSVLALSTEVQAARALTVS            AVLLAFVALFVTLA            GAQCTTCVAPGPAKARVALTGGVLYLFCGLLALVPLC            WFANVVREFYDP            SVPVSQKYELGAALYIGWAATALLMVGGLCCGAWV            CTGRPDLSFPVKY SAPRRPTATGDYDKKNYV</p>
<b>Molecular weight</b>	50 kDa including tags
<b>Amino acids</b>	1 to 218

Specifications

Our [Abpromise guarantee](#) covers the use of **ab152754** in the following tested applications. The application notes include recommended starting dilutions; optimal dilutions/concentrations should be determined by the end user.

<b>Applications</b>	<p>Western blot</p> <p>SDS-PAGE</p> <p>ELISA</p>
<b>Form</b>	Liquid
<b>Additional notes</b>	Protein concentration is above or equal to 0.05 µg/µl.

Preparation and Storage

## Preparation and Storage

---

### Stability and Storage

Shipped on dry ice. Upon delivery aliquot and store at -80°C. Avoid freeze / thaw cycles.

pH: 8.00

Constituents: 0.31% Glutathione, 0.79% Tris HCl

## General Info

---

### Function

Plays a major role in tight junction-specific obliteration of the intercellular space.

### Sequence similarities

Belongs to the claudin family.

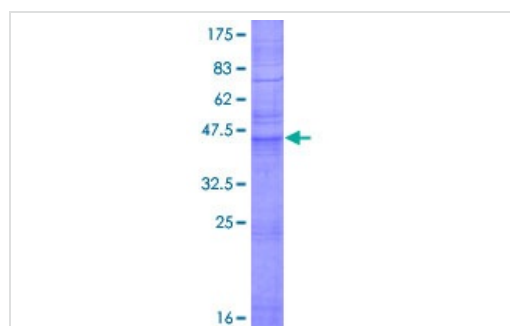
### Cellular localization

Cell junction > tight junction. Cell membrane.

---

## Images

---



12.5% SDS-PAGE analysis of ab152754 stained with Coomassie Blue.

SDS-PAGE - Recombinant Human Claudin 5 protein  
(ab152754)

**Please note:** All products are "FOR RESEARCH USE ONLY. NOT FOR USE IN DIAGNOSTIC PROCEDURES"

## Our Abpromise to you: Quality guaranteed and expert technical support

---

- Replacement or refund for products not performing as stated on the datasheet
- Valid for 12 months from date of delivery
- Response to your inquiry within 24 hours
- We provide support in Chinese, English, French, German, Japanese and Spanish
- Extensive multi-media technical resources to help you
- We investigate all quality concerns to ensure our products perform to the highest standards

If the product does not perform as described on this datasheet, we will offer a refund or replacement. For full details of the Abpromise, please visit <https://www.abcam.com/abpromise> or contact our technical team.

## Terms and conditions

---

- Guarantee only valid for products bought direct from Abcam or one of our authorized distributors