

Product datasheet

Recombinant Human CLCN6 protein ab158136

1 Image

Overview

Product name	Recombinant Human CLCN6 protein
Protein length	Full length protein

Description

Nature	Recombinant
Source	Wheat germ
Amino Acid Sequence	
Species	Human

Sequence	<p>MAGCRGSLCCCCRWCCCCGERETRTPEELTILGETQ EEDEILPRKDYES LDYDRCINDPYLEVLETMDNKKGRRYEAVKWMVVFAL GVCTGLVGLFVDF FVRLFTQLKFGVVQTSVEECSQKGCLALSLELLGFNL TFVFLASLLVLI EPVAAGSGIPEVKCYLNGVKVPGVRLRLLCKVLGVL FSVAGGLFVGKE GPMIHSGSVVGAGLPQFQSISLRKIQFNFPYFRSDRDK RDFVSAGAAAGV AAAFGAPIGGTLFSLEEGSSFWNQGLTWKVLFCMSMA TFTLNFFRSGIQF GSWGFSQLPGLLNFGFEFKCSDSDKKCHLWTAMDLG FFVVMGVIGLLGAT FNCLNKRLAKYRMRNVHPKPKLVRVLESLLVSLVTTVV VVASMVLGECR QMSSSSQIGNDSFQLQVTEVDNSSIKTFFCPNDTYND MATLFFNPQESAI LQLFHQDGTFSVTLALFFVLYFLLACWYGISVPSGLF VPSLLCGAAGF RLVANVLKSYIGLGHYSGTFALIGAAFLGGVVRMTISL TVILIESTNE ITYGLPIMVTLMVAKWTGDFFNKGMDIHVGLRGVPLLE WETEVEMDKLR ASDIMEPNLTYVYPHTRIQSLVSILRTTVHHAFPVVTENR GNEKEFMKGN</p>
-----------------	---

QLISNNKFKKSSILTRAGEQRKRSQSMKSYPSSELRN
MCDEHIASEEP
EKEDLLQQMLERRYTPYNLYPDQSPSEDWTMEERF
RPLTFHGLILRSQL
VTLLVRGVCYSESQSSASQPRLSYAEMAEDYPRYPDI
HDLDTLLNPRMI
VDVTPYMNPSPFTVSPNTHVSQVFNLFRMTGLRHLPV
VNAVGEVGIITR HNLTYEFLQARLRQHYQTI

Amino acids 1 to 869
Tags GST tag N-Terminus

Specifications

Our [Abpromise guarantee](#) covers the use of **ab158136** in the following tested applications.

The application notes include recommended starting dilutions; optimal dilutions/concentrations should be determined by the end user.

Applications Western blot
ELISA
Form Liquid
Additional notes Protein concentration is above or equal to 0.05 mg/ml.

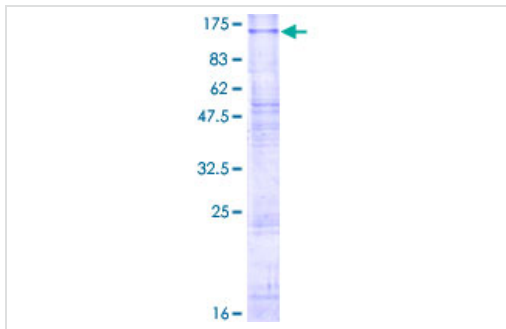
Preparation and Storage

Stability and Storage Shipped on dry ice. Upon delivery aliquot and store at -80°C. Avoid freeze / thaw cycles.
pH: 8.00
Constituents: 0.31% Glutathione, 0.79% Tris HCl

General Info

Function Chloride transport protein, initially identified as voltage-gated chloride channel. The presence of the conserved gating glutamate residues suggests that it functions as antiporter.
Tissue specificity Testis, ovary, small intestine, brain and skeletal muscle. Low level expression in aortic and coronary vascular smooth muscle cells, and aortic endothelial cells. Isoform 3 is only detected in kidney.
Sequence similarities Belongs to the chloride channel (TC 2.A.49) family. CIC-6/CLCN6 subfamily. Contains 2 CBS domains.
Post-translational modifications N-glycosylated on several asparagine residues.
Cellular localization Endosome membrane. Detected in detergent-resistant lipid rafts.

Images



ab158136 on a 12.5% SDS-PAGE stained with Coomassie Blue.

SDS-PAGE - Recombinant Human CLCN6 protein
(ab158136)

Please note: All products are "FOR RESEARCH USE ONLY. NOT FOR USE IN DIAGNOSTIC PROCEDURES"

Our Abpromise to you: Quality guaranteed and expert technical support

- Replacement or refund for products not performing as stated on the datasheet
- Valid for 12 months from date of delivery
- Response to your inquiry within 24 hours
- We provide support in Chinese, English, French, German, Japanese and Spanish
- Extensive multi-media technical resources to help you
- We investigate all quality concerns to ensure our products perform to the highest standards

If the product does not perform as described on this datasheet, we will offer a refund or replacement. For full details of the Abpromise, please visit <https://www.abcam.com/abpromise> or contact our technical team.

Terms and conditions

- Guarantee only valid for products bought direct from Abcam or one of our authorized distributors