

Product datasheet

Recombinant Human CLEC10A protein (Fc Chimera)
ab219892

1 Image

Description

Product name	Recombinant Human CLEC10A protein (Fc Chimera)	
Purity	> 92 % SDS-PAGE.	
Endotoxin level	< 1.000 Eu/µg	
Expression system	HEK 293 cells	
Accession	Q8IUN9	
Protein length	Protein fragment	
Animal free	No	
Nature	Recombinant	
Species	Human	
Sequence	<p>QNSKFQRDLVTLRDTFSNFTSNTVAEIQALTSQGSSLE ETIASLKAEVEG FKQERQAGVSELQEHTTQKAHLGHCPHCPSVCVPVH SEMLLRVQQLVQDL KKLTCQVATLNNASTEGTC CPVNWVEHQDSCYWFSGMSWAEAEKY CQLKNAHLVVINSREEQNFVQKYLGSAYTWMGLSDPE GAWKWVDGTDYAT GFQNWKPGQPDDWQGHGLGGGEDCAHFHPDGRWN DDVCQRPHYHWCEAGL GQTSQESH</p>	
Predicted molecular weight	56 kDa including tags	
Amino acids	61 to 316	
Additional sequence information	Fused with human IgG1 Fc tag at the N-terminus (AAH39011).	

Specifications

Our [Abpromise guarantee](#) covers the use of **ab219892** in the following tested applications.

The application notes include recommended starting dilutions; optimal dilutions/concentrations should be determined by the end user.

Applications	SDS-PAGE
Form	Lyophilised

Preparation and Storage

Stability and Storage

Shipped at 4°C. Store at 4°C (stable for up to 12 months). Store at -20°C or -80°C. Avoid freeze / thaw cycle.

pH: 7.50

Constituents: 0.61% Tris, 0.75% Glycine, L-Arginine, Sodium chloride

Lyophilized from 0.22 µm filtered solution.

5-10% trehalose is commonly used for freeze drying, and after reconstitution, the trehalose is mostly about 3-5%

Reconstitution

Reconstitute the lyophilized product in sterile deionized water to a final concentration of 1 mg/ml. Solubilize for 30 to 60 minutes at room temperature with occasional gentle mixing. Carrier protein (0.1% HSA or BSA) is strongly recommended for further dilution and long term storage. After reconstitution, store under sterile conditions for 3 months (-70oC).

General Info

Function

Probable role in regulating adaptive and innate immune responses. Binds in a calcium-dependent manner to terminal galactose and N-acetylgalactosamine units, linked to serine or threonine. These sugar moieties are known as Tn-Ag and are expressed in a variety of carcinoma cells.

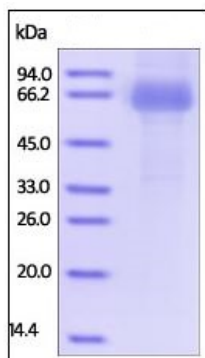
Sequence similarities

Contains 1 C-type lectin domain.

Cellular localization

Membrane.

Images



SDS-PAGE - Recombinant Human CLEC10A protein (Fc Chimera) (ab219892)

SDS-PAGE analysis of DTT-reduced ab219892 stained overnight with Coomassie Blue.

DTT-reduced Protein migrates as 60-75 kDa in SDS-PAGE due to glycosylation.

Please note: All products are "FOR RESEARCH USE ONLY. NOT FOR USE IN DIAGNOSTIC PROCEDURES"

Our Abpromise to you: Quality guaranteed and expert technical support

- Replacement or refund for products not performing as stated on the datasheet
- Valid for 12 months from date of delivery

- Response to your inquiry within 24 hours
- We provide support in Chinese, English, French, German, Japanese and Spanish
- Extensive multi-media technical resources to help you
- We investigate all quality concerns to ensure our products perform to the highest standards

If the product does not perform as described on this datasheet, we will offer a refund or replacement. For full details of the Abpromise, please visit <https://www.abcam.com/abpromise> or contact our technical team.

Terms and conditions

- Guarantee only valid for products bought direct from Abcam or one of our authorized distributors