

Product datasheet

Recombinant Human CLECL1 protein ab165721

1 Image

Description

Product name	Recombinant Human CLECL1 protein	
Expression system	Wheat germ	
Protein length	Protein fragment	
Animal free	No	
Nature	Recombinant	
Species	Human	
Sequence	DVVYADIKTVRTSPLELAFPLQRSVSFNFSTVHKSCPAKD WKVHKGKCYW IAETKKSWNKSQNDCAINNSYLMVIQDITAMVRFNI	
Amino acids	82 to 167	
Tags	GST tag N-Terminus	

Specifications

Our [Abpromise guarantee](#) covers the use of **ab165721** in the following tested applications. The application notes include recommended starting dilutions; optimal dilutions/concentrations should be determined by the end user.

Applications	ELISA
	Western blot
Form	Liquid
Additional notes	

Preparation and Storage

Stability and Storage	Shipped on dry ice. Upon delivery aliquot and store at -80°C. Avoid freeze / thaw cycles. pH: 8.00 Constituents: 0.31% Glutathione, 0.79% Tris HCl
------------------------------	--

General Info

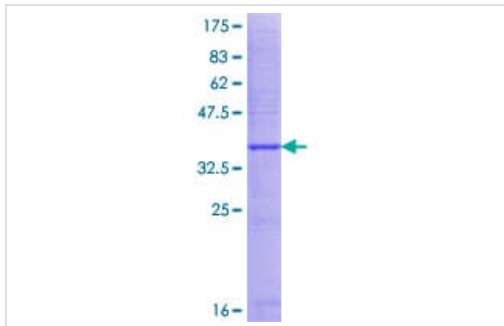
Relevance

CLECL1 is a type II transmembrane, C-type lectin-like protein expressed on dendritic cells (DCs) and B cells. It interacts with subsets of T cells as a costimulatory molecule that enhances interleukin-4 (IL4) production.

Cellular localization

Cell membrane; Single-pass type II membrane protein.

Images



ab165721 on a 12.5% SDS-PAGE stained with Coomassie Blue.

SDS-PAGE - Recombinant Human CLECL1 protein
(ab165721)

Please note: All products are "FOR RESEARCH USE ONLY. NOT FOR USE IN DIAGNOSTIC PROCEDURES"

Our Abpromise to you: Quality guaranteed and expert technical support

- Replacement or refund for products not performing as stated on the datasheet
- Valid for 12 months from date of delivery
- Response to your inquiry within 24 hours

- We provide support in Chinese, English, French, German, Japanese and Spanish
- Extensive multi-media technical resources to help you
- We investigate all quality concerns to ensure our products perform to the highest standards

If the product does not perform as described on this datasheet, we will offer a refund or replacement. For full details of the Abpromise, please visit <https://www.abcam.com/abpromise> or contact our technical team.

Terms and conditions

- Guarantee only valid for products bought direct from Abcam or one of our authorized distributors