

Product datasheet

Recombinant Human COL6A5 protein ab166058

1 Image

Overview

<b>Product name</b>	Recombinant Human COL6A5 protein
<b>Protein length</b>	Full length protein

Description

<b>Nature</b>	Recombinant
<b>Source</b>	Wheat germ
<b>Amino Acid Sequence</b>	
<b>Species</b>	Human

<b>Sequence</b>	MDVVFLIDNSRNIKDEFKAVKALVSSVIDNFNIASDPLI SDSGDRIALL SYSPWESSRRKMGTVKTEFDFFITYDNQLLMKNHIQTSF QQLNGEATIGRA LLWTTENLFPETPYLRKHKVIFVVSAGENYERKEFVKM MALRAKCQGYVI FVISLGSTRKDDMEELASYPLDQHILQLGRIHKPDLNYIA KFLKPFLYSV RRGFNQYPPMLEDACRLINLGGENIQNDGFQFVTELQ EDFLGGNGFIGQ ELNSGRES PFVKTEDNGSDYLVYLPSQMFEPQKLMIN YEKDQKSAEIASL TSGHENYGRKEEPDHTYEPGDVSLQEYMDVAFLIDA SQRVGSDEFKEVK AFITSVLDYFHIAPTPLTSTLGDRVAVLSYSPPGYMPNT EECPVYLEFDL VTYNSIHQMKHHLQDSQQLNQDVFIGHALQWTIDNVFV GTPNLRKNKVIF VISAGETNSLDKDVLRNVSLRAKCQGYISIFVFSFGPKH NDKELEELASHP LDHHLVQLGRTHKPDWNYIIFVKPFVHLIRRAINKYPTE DMKATCVNMT SPNPENGGTENTVLW
-----------------	---

<b>Amino acids</b>	1 to 565
<b>Tags</b>	GST tag N-Terminus

## Specifications

---

Our [Abpromise guarantee](#) covers the use of **ab166058** in the following tested applications.

The application notes include recommended starting dilutions; optimal dilutions/concentrations should be determined by the end user.

<b>Applications</b>	ELISA Western blot
<b>Form</b>	Liquid
<b>Additional notes</b>	Protein concentration is above or equal to 0.05 mg/ml.

## Preparation and Storage

---

<b>Stability and Storage</b>	Shipped on dry ice. Upon delivery aliquot and store at -80°C. Avoid freeze / thaw cycles. pH: 8.00 Constituents: 0.31% Glutathione, 0.79% Tris HCl
------------------------------	--

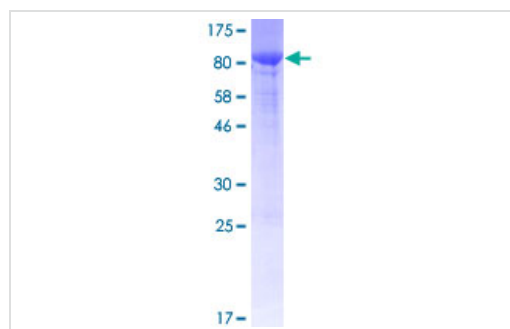
## General Info

---

<b>Function</b>	Collagen VI acts as a cell-binding protein.
<b>Tissue specificity</b>	Expressed in skin, followed by lung, small intestine, colon and testis. In skin, it is expressed in the epidermis with strongest staining in suprabasal viable layers. In ATOD patients, it is absent in the most differentiated upper spinous and granular layers (at protein level).
<b>Involvement in disease</b>	Note=Patients affected by atopic dermatitis display an abnormal distribution of COL29A1 mRNA and protein in skin suggesting that COL29A1 may be involved in the pathogenesis of the disease.
<b>Sequence similarities</b>	Belongs to the type VI collagen family. Contains 10 VWFA domains.
<b>Post-translational modifications</b>	Prolines at the third position of the tripeptide repeating unit (G-X-Y) are hydroxylated in some or all of the chains.
<b>Cellular localization</b>	Secreted > extracellular space > extracellular matrix. Deposited in the extracellular matrix of skeletal muscle.

## Images

---



ab166058 on a 12.5% SDS-PAGE stained with Coomassie Blue.

SDS-PAGE - Recombinant Human COL6A5 protein  
(ab166058)

**Please note:** All products are "FOR RESEARCH USE ONLY AND ARE NOT INTENDED FOR DIAGNOSTIC OR THERAPEUTIC USE"

### **Our Abpromise to you: Quality guaranteed and expert technical support**

---

- Replacement or refund for products not performing as stated on the datasheet
- Valid for 12 months from date of delivery
- Response to your inquiry within 24 hours
  
- We provide support in Chinese, English, French, German, Japanese and Spanish
- Extensive multi-media technical resources to help you
- We investigate all quality concerns to ensure our products perform to the highest standards

If the product does not perform as described on this datasheet, we will offer a refund or replacement. For full details of the Abpromise, please visit <https://www.abcam.com/abpromise> or contact our technical team.

### **Terms and conditions**

---

- Guarantee only valid for products bought direct from Abcam or one of our authorized distributors