

## Product datasheet

# Recombinant Human COLEC11 protein ab163951

1 Image

### Overview

<b>Product name</b>	Recombinant Human COLEC11 protein
<b>Protein length</b>	Full length protein

### Description

<b>Nature</b>	Recombinant
<b>Source</b>	Wheat germ
<b>Amino Acid Sequence</b>	
<b>Species</b>	Human
<b>Sequence</b>	<p>MRGNLALVGVLISLAFLLPSGHPQPAGDDACSVQIL            VPGLKGDAGEKG            DKGAPGRPGRVGTGEKGDMDKQKGSVGRHGKI            GPIGSKGEKGDSDI            GPPGPNGEPLPCECSQLRKAIGEMDNQVSQLTSEL            KFIKNAVAGVRETE            SKYLLVKEEKRYADAQLSCQGRGGTLSMPKDEAANG            LMAAYLAQAGLAR            VFIGINDLEKEGAFVYSDHSPMRTFNKWRSGEPNNAY            DEEDCVEMVASGG WNDVACHTTMYFMCEFDKENM</p>
<b>Amino acids</b>	1 to 271
<b>Tags</b>	GST tag N-Terminus

### Specifications

Our [Abpromise guarantee](#) covers the use of **ab163951** in the following tested applications.

The application notes include recommended starting dilutions; optimal dilutions/concentrations should be determined by the end user.

<b>Applications</b>	Western blot ELISA
<b>Form</b>	Liquid
<b>Additional notes</b>	Protein concentration is above or equal to 0.05 mg/ml.

### Preparation and Storage

## Stability and Storage

Shipped on dry ice. Upon delivery aliquot and store at -80°C. Avoid freeze / thaw cycles.

pH: 8.00

Constituents: 0.31% Glutathione, 0.79% Tris HCl

## General Info

---

### Function

Lectin that binds to various sugars including fucose and mannose. Has a higher affinity for fucose compared to mannose. Does not bind to glucose, N-acetylglucosamine and N-acetylgalactosamine. Also binds lipopolysaccharides (LPS). Involved in fundamental development serving as a guidance cue for neural crest cell migration.

### Tissue specificity

Ubiquitous.

### Involvement in disease

Defects in COLEC11 are the cause of 3MC syndrome type 2 (3MC2) [MIM:265050]. 3MC2 is an a disorder characterized by facial dysmorphism that includes hypertelorism, blepharophimosis, blepharoptosis and highly archedDE eyebrows, cleft lip and/or palate, craniosynostosis, learning disability and genital, limb and vesicorenal anomalies. The term 3MC syndrome includes Carnevale, Mingarelli, Malpuech, and Michels syndromes.

### Sequence similarities

Belongs to the COLEC10/COLEC11 family.

Contains 1 C-type lectin domain.

Contains 1 collagen-like domain.

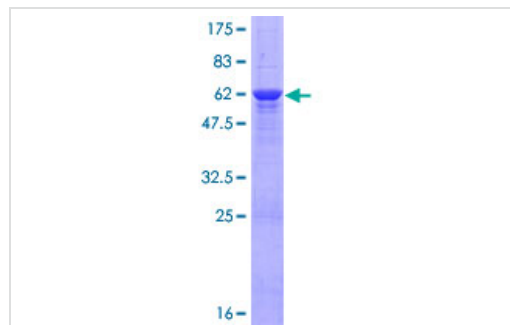
### Cellular localization

Secreted.

---

## Images

---



SDS-PAGE - Recombinant Human COLEC11 protein (ab163951)

ab163951 on a 12.5% SDS-PAGE stained with Coomassie Blue.

**Please note:** All products are "FOR RESEARCH USE ONLY AND ARE NOT INTENDED FOR DIAGNOSTIC OR THERAPEUTIC USE"

## Our Promise to you: Quality guaranteed and expert technical support

---

- Replacement or refund for products not performing as stated on the datasheet
- Valid for 12 months from date of delivery
- Response to your inquiry within 24 hours
- We provide support in Chinese, English, French, German, Japanese and Spanish

- Extensive multi-media technical resources to help you
- We investigate all quality concerns to ensure our products perform to the highest standards

If the product does not perform as described on this datasheet, we will offer a refund or replacement. For full details of the Abpromise, please visit <https://www.abcam.com/abpromise> or contact our technical team.

### **Terms and conditions**

---

- Guarantee only valid for products bought direct from Abcam or one of our authorized distributors