

Product datasheet

Recombinant Human COLQ protein ab159980

1 Image

Overview

Product name	Recombinant Human COLQ protein
Protein length	Protein fragment

Description

Nature	Recombinant
Source	Wheat germ
Amino Acid Sequence	
Species	Human
Sequence	PIQLTPFYPVDYADQHGTCGDGLLQPGEECDDGNSD VGDDCIRCHRAYC GDGHRHEGVEDCDGSDFGYLTCE TYLPGSYGDLQCT QCYDSTPCRYFT
Amino acids	356 to 455
Tags	GST tag N-Terminus

Specifications

Our [Abpromise guarantee](#) covers the use of **ab159980** in the following tested applications.

The application notes include recommended starting dilutions; optimal dilutions/concentrations should be determined by the end user.

Applications	Western blot ELISA
Form	Liquid
Additional notes	Protein concentration is above or equal to 0.05 mg/ml.

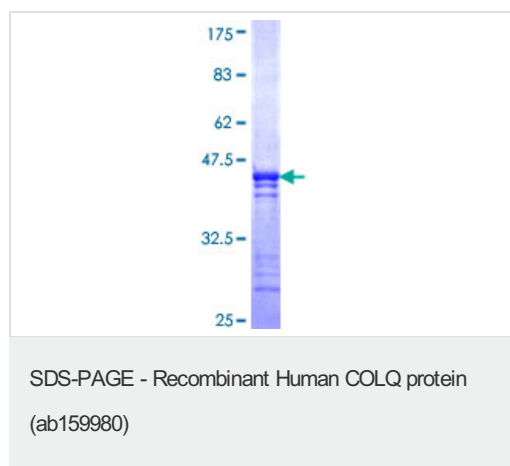
Preparation and Storage

Stability and Storage	Shipped on dry ice. Upon delivery aliquot and store at -80°C. Avoid freeze / thaw cycles. pH: 8.00 Constituents: 0.31% Glutathione, 0.79% Tris HCl
------------------------------	--

General Info

Function	Anchors the catalytic subunits of asymmetric AChE to the synaptic basal lamina.
Tissue specificity	Found at the end plate of skeletal muscle.
Involvement in disease	Defects in COLQ are the cause of congenital myasthenic syndrome Engel type (CMSE) [MIM:603034]; also known as end-plate acetylcholinesterase deficiency or congenital myasthenic syndrome type IC (CMS-IC). CMSE is a rare autosomal recessive congenital myasthenic syndrome characterized by onset during childhood, generalized weakness, abnormal fatigability on exertion, refractoriness to acetylcholinesterase drugs, decremental electromyographic response and morphological abnormalities of the neuromuscular junctions.
Sequence similarities	Belongs to the COLQ family. Contains 2 collagen-like domains.
Domain	The proline-rich attachment domain (PRAD) binds the AChE catalytic subunits.
Post-translational modifications	The triple-helical tail is stabilized by disulfide bonds at each end.
Cellular localization	Cell junction > synapse.

Images



ab159980 on a 12.5% SDS-PAGE stained with Coomassie Blue.

Please note: All products are "FOR RESEARCH USE ONLY AND ARE NOT INTENDED FOR DIAGNOSTIC OR THERAPEUTIC USE"

Our Abpromise to you: Quality guaranteed and expert technical support

- Replacement or refund for products not performing as stated on the datasheet
- Valid for 12 months from date of delivery
- Response to your inquiry within 24 hours
- We provide support in Chinese, English, French, German, Japanese and Spanish
- Extensive multi-media technical resources to help you
- We investigate all quality concerns to ensure our products perform to the highest standards

If the product does not perform as described on this datasheet, we will offer a refund or replacement. For full details of the Abpromise, please visit <https://www.abcam.com/abpromise> or contact our technical team.

Terms and conditions

- Guarantee only valid for products bought direct from Abcam or one of our authorized distributors