

Product datasheet

# Recombinant Human COX2 / Cyclooxygenase 2 protein ab159280

[1 Image](#)

Overview

<b>Product name</b>	Recombinant Human COX2 / Cyclooxygenase 2 protein
<b>Protein length</b>	Full length protein

Description

<b>Nature</b>	Recombinant
<b>Source</b>	Wheat germ
<b>Amino Acid Sequence</b>	
<b>Species</b>	Human

<b>Sequence</b>	<p>MLARALLLCAVLALSHTANPCCSHPCQNRGVCMSVG          FDQYKCDCTRTRGFY          GENCSTPEFLTRIKLFLKPTPNTVHYLTHFKGFWNVVN          NIPFLRNAIMS          YVLTSRSHLIDSPPTYNADYGYKSWEAFSNLSYYTRAL          PPVPDDCPTPLG          VKGKKQLPDSNEIVEKLLLRKFIPDPQGSNMMFAFFA          QHFTHQFFKTDH          KRGAFTNGLGHGVDLNHIYGETLARQRKLRLFKD GK          MKYQIIDGEMYP          TVKDTQAEMYPQVPEHLRFVAVGQEVFGLVPLMMY          ATWLREHNRVCD          VLKQEHPEWGDQLFQTSRLILIGETIKMIEDYVQHLSG          YHFKLKFDPE          LLFNKQFQYQNRIAAEFNTLYHWHP LLPDTFQIHDQKYN          YQQFIYNSIL          LEHGITQFVESFTRQIAGRVAGGRNVPPAVQKVSQASI          DQSRQMKYQSFN          EYRKRFMLKPYESFEELTGEKEMSAELEALYGDIDAVE          LYPALLVEKPRP          DAIFGETMVEVGAPFSLKGLMGNVICSPAYWKPSTFG          GEVGFQIINTASI          QSLICNNVKGCPFTSFSVPDPELIKTVTINASSSRSGLD          DINPTVLLKER STEL</p>
-----------------	---

<b>Amino acids</b>	1 to 604
<b>Tags</b>	proprietary tag N-Terminus

## Specifications

Our [Abpromise guarantee](#) covers the use of **ab159280** in the following tested applications.

The application notes include recommended starting dilutions; optimal dilutions/concentrations should be determined by the end user.

<b>Applications</b>	Western blot ELISA
<b>Form</b>	Liquid
<b>Additional notes</b>	Protein concentration is above or equal to 0.05 mg/ml.

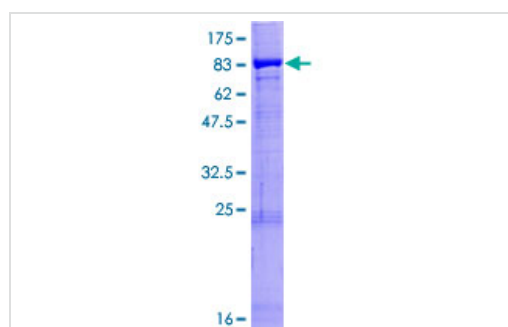
## Preparation and Storage

<b>Stability and Storage</b>	Shipped on dry ice. Upon delivery aliquot and store at -80°C. Avoid freeze / thaw cycles. pH: 8.00 Constituents: 0.31% Glutathione, 0.79% Tris HCl
------------------------------	--

## General Info

<b>Function</b>	Mediates the formation of prostaglandins from arachidonate. May have a role as a major mediator of inflammation and/or a role for prostanoid signaling in activity-dependent plasticity.
<b>Pathway</b>	Lipid metabolism; prostaglandin biosynthesis.
<b>Sequence similarities</b>	Belongs to the prostaglandin G/H synthase family. Contains 1 EGF-like domain.
<b>Post-translational modifications</b>	S-nitrosylation by NOS2 (iNOS) activates enzyme activity. S-nitrosylation may take place on different Cys residues in addition to Cys-561.
<b>Cellular localization</b>	Microsome membrane. Endoplasmic reticulum membrane.

## Images



ab159280 on a 12.5% SDS-PAGE stained with Coomassie Blue.

SDS-PAGE - Recombinant Human COX2 /  
Cyclooxygenase 2 protein (ab159280)

**Please note:** All products are "FOR RESEARCH USE ONLY AND ARE NOT INTENDED FOR DIAGNOSTIC OR THERAPEUTIC USE"

### **Our Abpromise to you: Quality guaranteed and expert technical support**

---

- Replacement or refund for products not performing as stated on the datasheet
- Valid for 12 months from date of delivery
- Response to your inquiry within 24 hours
  
- We provide support in Chinese, English, French, German, Japanese and Spanish
- Extensive multi-media technical resources to help you
- We investigate all quality concerns to ensure our products perform to the highest standards

If the product does not perform as described on this datasheet, we will offer a refund or replacement. For full details of the Abpromise, please visit <https://www.abcam.com/abpromise> or contact our technical team.

### **Terms and conditions**

---

- Guarantee only valid for products bought direct from Abcam or one of our authorized distributors