

Product datasheet

Recombinant Human COX4I2 protein ab164643

1 Image

Overview

Product name	Recombinant Human COX4I2 protein
Protein length	Full length protein

Description

Nature	Recombinant
Source	Wheat germ
Amino Acid Sequence	
Species	Human
Sequence	MLPRAAWSLVLRKGGGRRGMHSSEGTRGGGKMS PYTNCYAQRYPMPPE EPFCTELNAEEQALKEKEKGSWTQLTHAEKVALYRLQ FNETFAEMNRRSN EWKTVMGCVFFFIGFAALVMWQRVYVFPKPITLTDE RKAQQLQRMLDM KVNVPVQGLASRWDYEKKQWKK
Amino acids	1 to 171
Tags	proprietary tag N-Terminus

Specifications

Our [Abpromise guarantee](#) covers the use of **ab164643** in the following tested applications. The application notes include recommended starting dilutions; optimal dilutions/concentrations should be determined by the end user.

Applications	Western blot ELISA
Form	Liquid
Additional notes	Protein concentration is above or equal to 0.05 mg/ml.

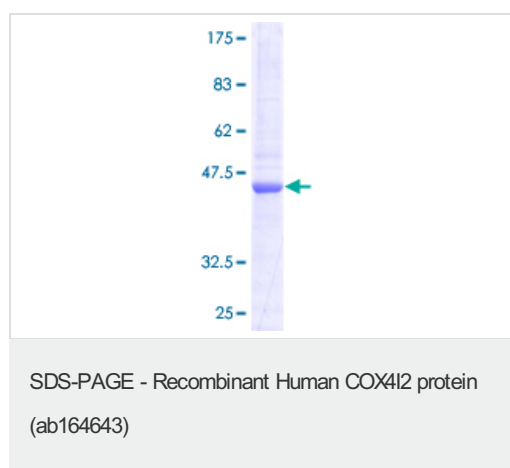
Preparation and Storage

Stability and Storage	Shipped on dry ice. Upon delivery aliquot and store at -80°C. Avoid freeze / thaw cycles. pH: 8.00 Constituents: 0.31% Glutathione, 0.79% Tris HCl
------------------------------	--

General Info

Function	This protein is one of the nuclear-coded polypeptide chains of cytochrome c oxidase, the terminal oxidase in mitochondrial electron transport.
Tissue specificity	Highly expressed in lung.
Involvement in disease	Defects in COX4I2 are the cause of exocrine pancreatic insufficiency dyserythropoietic anemia and calvarial hyperostosis (EPIDACH) [MIM:612714]. Patients present with pancreatic insufficiency, intestinal malabsorption, failure to thrive, and anemia soon after birth.
Sequence similarities	Belongs to the cytochrome c oxidase IV family.
Cellular localization	Mitochondrion inner membrane.

Images



ab164643 on a 12.5% SDS-PAGE stained with Coomassie Blue.

Please note: All products are "FOR RESEARCH USE ONLY AND ARE NOT INTENDED FOR DIAGNOSTIC OR THERAPEUTIC USE"

Our Abpromise to you: Quality guaranteed and expert technical support

- Replacement or refund for products not performing as stated on the datasheet
- Valid for 12 months from date of delivery
- Response to your inquiry within 24 hours

- We provide support in Chinese, English, French, German, Japanese and Spanish
- Extensive multi-media technical resources to help you
- We investigate all quality concerns to ensure our products perform to the highest standards

If the product does not perform as described on this datasheet, we will offer a refund or replacement. For full details of the Abpromise, please visit <https://www.abcam.com/abpromise> or contact our technical team.

Terms and conditions

- Guarantee only valid for products bought direct from Abcam or one of our authorized distributors