

## Product datasheet

# Recombinant Human COX4I2 protein ab164645

1 Image

### Overview

<b>Product name</b>	Recombinant Human COX4I2 protein
<b>Protein length</b>	Protein fragment

### Description

<b>Nature</b>	Recombinant
<b>Source</b>	Wheat germ
<b>Amino Acid Sequence</b>	
<b>Species</b>	Human
<b>Sequence</b>	MHSSEGTTTRGGGKMSPYTNCYAQRYYPMPEEPFCTE LNAEEQALKEKEKG SWTQLTHAEKVALYRLQFNETFAEMNRRSNEWKT
<b>Amino acids</b>	21 to 104
<b>Tags</b>	proprietary tag N-Terminus

### Specifications

Our [Abpromise guarantee](#) covers the use of **ab164645** in the following tested applications.

The application notes include recommended starting dilutions; optimal dilutions/concentrations should be determined by the end user.

<b>Applications</b>	ELISA Western blot
<b>Form</b>	Liquid
<b>Additional notes</b>	Protein concentration is above or equal to 0.05 mg/ml.

### Preparation and Storage

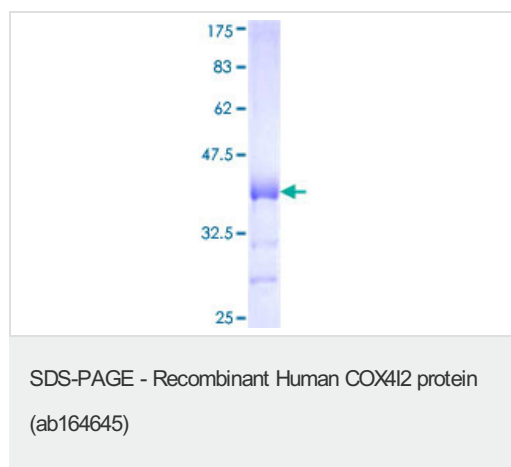
<b>Stability and Storage</b>	Shipped on dry ice. Upon delivery aliquot and store at -80°C. Avoid freeze / thaw cycles. pH: 8.00 Constituents: 0.31% Glutathione, 0.79% Tris HCl
------------------------------	--

### General Info

## General info

<b>Function</b>	This protein is one of the nuclear-coded polypeptide chains of cytochrome c oxidase, the terminal oxidase in mitochondrial electron transport.
<b>Tissue specificity</b>	Highly expressed in lung.
<b>Involvement in disease</b>	Defects in COX4I2 are the cause of exocrine pancreatic insufficiency dyserythropoietic anemia and calvarial hyperostosis (EPIDACH) [MIM:612714]. Patients present with pancreatic insufficiency, intestinal malabsorption, failure to thrive, and anemia soon after birth.
<b>Sequence similarities</b>	Belongs to the cytochrome c oxidase IV family.
<b>Cellular localization</b>	Mitochondrion inner membrane.

## Images



ab164645 on a 12.5% SDS-PAGE stained with Coomassie Blue.

**Please note:** All products are "FOR RESEARCH USE ONLY AND ARE NOT INTENDED FOR DIAGNOSTIC OR THERAPEUTIC USE"

## Our Abpromise to you: Quality guaranteed and expert technical support

- Replacement or refund for products not performing as stated on the datasheet
- Valid for 12 months from date of delivery
- Response to your inquiry within 24 hours
- We provide support in Chinese, English, French, German, Japanese and Spanish
- Extensive multi-media technical resources to help you
- We investigate all quality concerns to ensure our products perform to the highest standards

If the product does not perform as described on this datasheet, we will offer a refund or replacement. For full details of the Abpromise, please visit <https://www.abcam.com/abpromise> or contact our technical team.

## Terms and conditions

- Guarantee only valid for products bought direct from Abcam or one of our authorized distributors