

Product datasheet

Recombinant Human CPTP protein ab187436

1 Image

Description

Product name	Recombinant Human CPTP protein	
Purity	> 90 % SDS-PAGE. ab187436 was purified using conventional chromatography techniques.	
Expression system	Escherichia coli	
Accession	NP_001025056	
Protein length	Full length protein	
Animal free	No	
Nature	Recombinant	
Species	Human	
Sequence	MGSSHHHHHH SSGLVPRGSH MGSMDDSETG FNLKVVLVSF KQCLDEKEEV LLDPYASWK GLVRFLNSLG TIFSISKDV VSKLRIMERL RGGPQSEHYR SLQAMVAHEL SNRLVDLERR SHHPESGCRT VLRLHRALHW LQLFLEGLRT SPEDARTSAL CADSYNASLA AYHPWVRRRA VTVAFCTLPT REVFLEAMNV GPPEQAVQML GEALPFIQRV YNVSQKLYAE HSLLDLP	
Predicted molecular weight	27 kDa including tags	
Amino acids	1 to 214	
Tags	His tag N-Terminus	
Additional sequence information	NP_001025056.1.	

Specifications

Our [Abpromise guarantee](#) covers the use of **ab187436** in the following tested applications.

The application notes include recommended starting dilutions; optimal dilutions/concentrations should be determined by the end user.

Applications	SDS-PAGE Mass Spectrometry
Mass spectrometry	MALDI-TOF
Form	Liquid
Additional notes	Previously labelled as GLTPD1.

Preparation and Storage

Stability and Storage

Shipped at 4°C. Store at +4°C short term (1-2 weeks). Upon delivery aliquot. Store at -20°C or -80°C. Avoid freeze / thaw cycle.

pH: 7.40

Constituents: 49% PBS, 50% Glycerol (glycerin, glycerine), 0.02% DTT

General Info

Function

Mediates the intracellular transfer of ceramide-1-phosphate between organelle membranes and the cell membrane. Required for normal structure of the Golgi stacks. Can bind phosphoceramides with a variety of aliphatic chains, but has a preference for lipids with saturated C16:0 or monounsaturated C18:1 aliphatic chains, and is inefficient with phosphoceramides containing lignoceryl (C24:0). Plays a role in the regulation of the cellular levels of ceramide-1-phosphate, and thereby contributes to the regulation of phospholipase PLA2G4A activity and the release of arachidonic acid. Has no activity with galactosylceramide, lactosylceramide, sphingomyelin, phosphatidylcholine, phosphatidic acid and ceramide.

Tissue specificity

Ubiquitous. Detected in heart, brain, placenta, lung, liver, skeletal muscle, kidney, pancreas, spleen, thymus, prostate, testis, ovary, small intestine, colon and peripheral blood leukocytes.

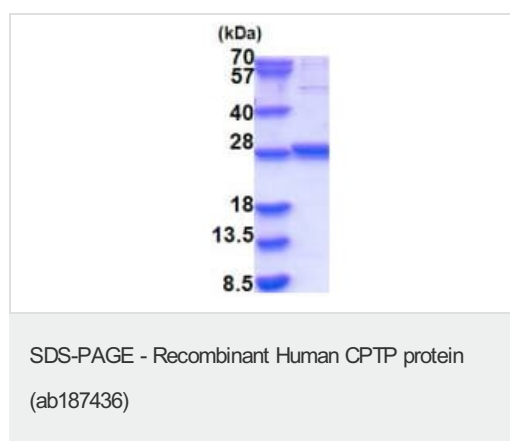
Sequence similarities

Belongs to the GLTP family.

Cellular localization

Cytoplasm > cytosol. Golgi apparatus > trans-Golgi network membrane. Cell membrane. Endosome membrane. Nucleus outer membrane.

Images



15% SDS-PAGE analysis of ab187436 (3µg).

Please note: All products are "FOR RESEARCH USE ONLY. NOT FOR USE IN DIAGNOSTIC PROCEDURES"

Our Promise to you: Quality guaranteed and expert technical support

- Replacement or refund for products not performing as stated on the datasheet
- Valid for 12 months from date of delivery

- Response to your inquiry within 24 hours
- We provide support in Chinese, English, French, German, Japanese and Spanish
- Extensive multi-media technical resources to help you
- We investigate all quality concerns to ensure our products perform to the highest standards

If the product does not perform as described on this datasheet, we will offer a refund or replacement. For full details of the Abpromise, please visit <https://www.abcam.com/abpromise> or contact our technical team.

Terms and conditions

- Guarantee only valid for products bought direct from Abcam or one of our authorized distributors