

Product datasheet

Recombinant Human Creatine kinase B type protein (His tag) ab217816

1 Image

Description

<b>Product name</b>	Recombinant Human Creatine kinase B type protein (His tag)	
<b>Purity</b>	> 95 % SDS-PAGE.	
<b>Endotoxin level</b>	< 1.000 Eu/μg	
<b>Expression system</b>	Escherichia coli	
<b>Accession</b>	<a href="#">P12277</a>	
<b>Protein length</b>	Full length protein	
<b>Animal free</b>	No	
<b>Nature</b>	Recombinant	
<b>Species</b>	Human	
<b>Sequence</b>	<p>PFSNSHNALKLRFPAEDEFDLSAHNNHMAKVLTPELYA  ELRAKSTPSGF  TLDDVIQTGVDNPGHPYIMTVGCVAGDEESYEVFKDLFDPI  IEDRHGGYK  PSDEHKTDLNPDNLQGGDDLDPNYVLSRVRTGRSIRGF  CLPPHCSRGER  RAIEKLAVEALSSLDGDLAGRYYALKSMTEAEQQQLIDDH  FLFDKPVSPL  LLASGMARDWPDARGIWHNDNKTFVWVNEEDHLRVISM  QKGGNMKEVFT  RFCTGLTQIETLFKSKDYEFMWNPHLGYILTCPSNLGTGLR  AGVHIKLPN  LGKHEKFSEVLKRLRLQKRGTGGVDAAVGGVFDVSNAD  RLGFSEVELVQ  MVVDGVKLLIEMEQRLEQQQAIDDLMPAQK</p>	
<b>Predicted molecular weight</b>	44 kDa including tags	
<b>Amino acids</b>	2 to 381	
<b>Tags</b>	His tag N-Terminus	
<b>Additional sequence information</b>	The predicted N-terminus is Met (AAH19259).	

Specifications

## Specifications

---

Our [Abpromise guarantee](#) covers the use of **ab217816** in the following tested applications.

The application notes include recommended starting dilutions; optimal dilutions/concentrations should be determined by the end user.

**Applications** SDS-PAGE

**Form** Lyophilized

## Preparation and Storage

---

**Stability and Storage** Shipped at 4°C. Store at -20°C or -80°C. Avoid freeze / thaw cycle. For long term storage it is recommended to add a carrier protein on reconstitution (0.1% HSA or BSA).

pH: 7.40

Constituents: 95% PBS, 5% Trehalose

Lyophilised from 0.22 µm filtered solution.

**Reconstitution** Reconstitute with sterile deionized water to a concentration of 300 µg/ml.

## General Info

---

**Function** Reversibly catalyzes the transfer of phosphate between ATP and various phosphogens (e.g. creatine phosphate). Creatine kinase isoenzymes play a central role in energy transduction in tissues with large, fluctuating energy demands, such as skeletal muscle, heart, brain and spermatozoa.

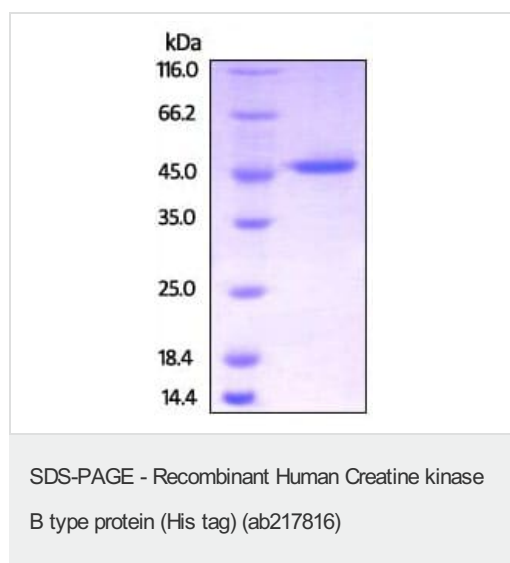
**Sequence similarities** Belongs to the ATP:guanido phosphotransferase family.  
Contains 1 phosphagen kinase C-terminal domain.  
Contains 1 phosphagen kinase N-terminal domain.

**Cellular localization** Cytoplasm.

---

## Images

---



SDS-PAGE analysis of DTT-reduced ab217816 followed by staining overnight with Coomassie Blue.

DTT-reduced protein migrates as 45 kDa in SDS-PAGE.

## **Our Abpromise to you: Quality guaranteed and expert technical support**

---

- Replacement or refund for products not performing as stated on the datasheet
- Valid for 12 months from date of delivery
- Response to your inquiry within 24 hours
  
- We provide support in Chinese, English, French, German, Japanese and Spanish
- Extensive multi-media technical resources to help you
- We investigate all quality concerns to ensure our products perform to the highest standards

If the product does not perform as described on this datasheet, we will offer a refund or replacement. For full details of the Abpromise, please visit <https://www.abcam.com/abpromise> or contact our technical team.

## **Terms and conditions**

---

- Guarantee only valid for products bought direct from Abcam or one of our authorized distributors