

Product datasheet

Recombinant Human CRIF1 protein ab113863

1 Image

Description

Product name	Recombinant Human CRIF1 protein
Purity	> 90 % SDS-PAGE. ab113863 was purified by using conventional chromatography techniques.
Expression system	Escherichia coli
Accession	Q8TAE8
Protein length	Protein fragment
Animal free	No
Nature	Recombinant
Species	Human
Sequence	MGSSHHHHHSSGLVPRGSHMPRWQLGPRYAAKQFAR YGAASGVVPGSLW PSPEQLRELEAEEREWYPSLATMQESLRVKQLAEEQKRR EREQHIAECMA KMPQMNVNWQQQRENWEKAQADKERRARLQAEAQELL GYQVDPRSARFQ ELLQDLEKKERKRLKEEKQKRKKEARAAALAAVAQDPA ASGAPSS
Predicted molecular weight	23 kDa including tags
Amino acids	48 to 222
Tags	His tag N-Terminus

Specifications

Our [Abpromise guarantee](#) covers the use of **ab113863** in the following tested applications.

The application notes include recommended starting dilutions; optimal dilutions/concentrations should be determined by the end user.

Applications	SDS-PAGE Mass Spectrometry
Mass spectrometry	MALDI-TOF
Form	Liquid
Additional notes	Previously labelled as GADD45GIP1.

Preparation and Storage

Stability and Storage

Shipped at 4°C. Store at +4°C short term (1-2 weeks). Upon delivery aliquot. Store at -20°C or -80°C. Avoid freeze / thaw cycle.

pH: 8.00

Constituents: 0.03% DTT, 0.32% Tris HCl, 40% Glycerol (glycerin, glycerine), 1.17% Sodium chloride

General Info

Function

Acts as a negative regulator of G1 to S cell cycle phase progression by inhibiting cyclin-dependent kinases. Inhibitory effects are additive with GADD45 proteins but occurs also in the absence of GADD45 proteins. Acts as a repressor of the orphan nuclear receptor NR4A1 by inhibiting AB domain-mediated transcriptional activity. May be involved in the hormone-mediated regulation of NR4A1 transcriptional activity.

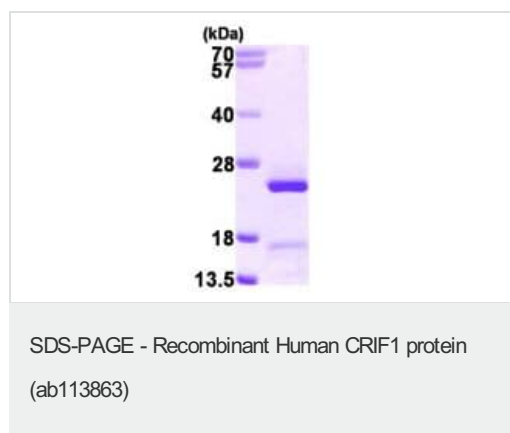
Tissue specificity

Widely expressed. Highly expressed in the thyroid gland, heart, lymph nodes, trachea and adrenal tissues. Expressed at lower level in liver skeletal muscle, kidney, pancreas, testis, ovary and stomach. Barely detectable in adrenal adenoma and papillary thyroid cancer.

Cellular localization

Nucleus.

Images



ab113863 at 3 µg analysed by 15% SDS-PAGE.

Please note: All products are "FOR RESEARCH USE ONLY. NOT FOR USE IN DIAGNOSTIC PROCEDURES"

Our Abpromise to you: Quality guaranteed and expert technical support

- Replacement or refund for products not performing as stated on the datasheet
- Valid for 12 months from date of delivery
- Response to your inquiry within 24 hours
- We provide support in Chinese, English, French, German, Japanese and Spanish
- Extensive multi-media technical resources to help you
- We investigate all quality concerns to ensure our products perform to the highest standards

If the product does not perform as described on this datasheet, we will offer a refund or replacement. For full details of the Abpromise, please visit <https://www.abcam.com/abpromise> or contact our technical team.

Terms and conditions

- Guarantee only valid for products bought direct from Abcam or one of our authorized distributors