

## Product datasheet

# Recombinant Human CrkL protein ab116208

1 Image

### Description

<b>Product name</b>	Recombinant Human CrkL protein
<b>Purity</b>	> 90 % SDS-PAGE. ab116208 was purified using conventional chromatography techniques.
<b>Expression system</b>	Escherichia coli
<b>Accession</b>	<a href="#">P46109</a>
<b>Protein length</b>	Full length protein
<b>Animal free</b>	No
<b>Nature</b>	Recombinant
<b>Species</b>	Human
<b>Sequence</b>	<p><b>MGSSHHHHHSSGLVPRGSHMSSARFDSSDRSAWYM</b>  <b>GPVSRQEAQTRLQG</b>  <b>QRHGMFLVRDSSTCPGDYVLSVSENSRVSHYIINSLPNRR</b>  <b>FKIGDQEFDH</b>  <b>LPALLEFYKIHLYDTTTTLIEPAPRYSPPMGSVSAPNLPTAE</b>  <b>DNLEYVRT</b>  <b>LYDFPGNDAEDLPFKKGEILVIIKPEEQWWSARNKDGRV</b>  <b>GMIPVPYVEK</b>  <b>LVRSSPHGKHGNRNSNSYGIPEPAHAYAQPQTTTLPVAVS</b>  <b>GSPGAAITPL</b>  <b>PSTQNGPVFAKAIQKRVPcAYDKTALALEVGDmKVTRMNI</b>  <b>NGQWEGEVN GRKGLFPFTHVKIFDPQNPdENE</b></p>
<b>Predicted molecular weight</b>	36 kDa including tags
<b>Amino acids</b>	1 to 303
<b>Tags</b>	His tag N-Terminus

### Specifications

Our [Abpromise guarantee](#) covers the use of **ab116208** in the following tested applications.

The application notes include recommended starting dilutions; optimal dilutions/concentrations should be determined by the end user.

<b>Applications</b>	SDS-PAGE Mass Spectrometry
<b>Mass spectrometry</b>	MALDI-TOF

**Form** Liquid

## Preparation and Storage

**Stability and Storage** Shipped at 4°C. Store at +4°C short term (1-2 weeks). Upon delivery aliquot. Store at -20°C or -80°C. Avoid freeze / thaw cycle.

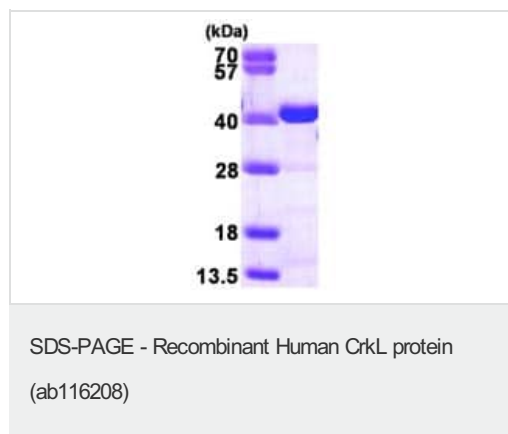
pH: 8.00  
Constituents: 0.03% DTT, 0.32% Tris HCl, 10% Glycerol (glycerin, glycerine), 0.58% Sodium chloride

## General Info

**Function** May mediate the transduction of intracellular signals.

**Sequence similarities** Belongs to the CRK family.  
Contains 1 SH2 domain.  
Contains 2 SH3 domains.

## Images



15% SDS-PAGE analysis of 3 µg ab116208.

**Please note:** All products are "FOR RESEARCH USE ONLY. NOT FOR USE IN DIAGNOSTIC PROCEDURES"

## Our Abpromise to you: Quality guaranteed and expert technical support

- Replacement or refund for products not performing as stated on the datasheet
- Valid for 12 months from date of delivery
- Response to your inquiry within 24 hours
- We provide support in Chinese, English, French, German, Japanese and Spanish
- Extensive multi-media technical resources to help you
- We investigate all quality concerns to ensure our products perform to the highest standards

If the product does not perform as described on this datasheet, we will offer a refund or replacement. For full details of the Abpromise, please visit <https://www.abcam.com/abpromise> or contact our technical team.

## Terms and conditions

---

- Guarantee only valid for products bought direct from Abcam or one of our authorized distributors