

Product datasheet

Recombinant Human CRMP3 protein ab132425

1 Image

Description

Product name	Recombinant Human CRMP3 protein
Expression system	Wheat germ
Accession	O14531
Protein length	Full length protein
Animal free	No
Nature	Recombinant
Species	Human
Sequence	<pre> MSFQGKKSIPRITSDRLLIRGGRVNDQSFYADVHVEDGLI KQIGENLI VPGGIKTIDAHGLMVLPGGVDVHTRLQMPVLGMTPADDF CQGTKAALAGG TTMILDHVFPDGTGVSLLAAEQWRERADSAACCDYSLHV DITRWHESIKE ELEALVKEKGVNSFLVFMAYKDRCQCSDSQMYEIFSIRD L GALAQVHAE NGDIMEEQKRLLELGITGPEGHVLSHPVEEAEAVYRAV TIAKQANCPL YVTKVMSKGAADAIAQAKRRGVVVFGEPIASLGTGSHY WSKNWAKAAA FVTSPVNPDPPTADHLTCLLSSGDLQVTGSAHCTFTTAQ KAVGKDNFAL IPEGTNGIEERMSMVWEKCVASGKMDENEFVAVTSTNAA KIFNFYPRKGR VAVGSDADLVWNPKATKIISAKTHNLNVEYNIFEGVECRG APAVVISQG RVALEDGKMFVTPGAGRFVPRKTFPDFVYKRIKARNRLAE IHGVPRLYD GPVHEVMVPAKPGSGAPARASCPGKISVPPVRNLHQSG FSLSGSQADDHIARRTAQKIMAPPGGRSNITSLS </pre>
Predicted molecular weight	88 kDa including tags
Amino acids	1 to 572

Specifications

Our [Abpromise guarantee](#) covers the use of **ab132425** in the following tested applications.

The application notes include recommended starting dilutions; optimal dilutions/concentrations should be determined by the end user.

Applications	ELISA Western blot SDS-PAGE
Form	Liquid

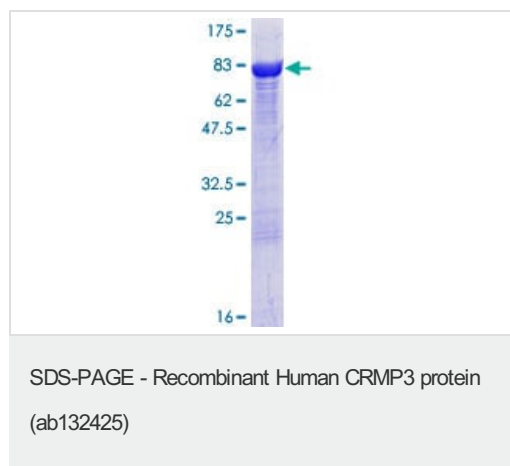
Preparation and Storage

Stability and Storage	Shipped on dry ice. Upon delivery aliquot and store at -80°C. Avoid freeze / thaw cycles. pH: 8.00 Constituents: 0.31% Glutathione, 0.79% Tris HCl
------------------------------	--

General Info

Function	Necessary for signaling by class 3 semaphorins and subsequent remodeling of the cytoskeleton. Plays a role in axon guidance, neuronal growth cone collapse and cell migration.
Sequence similarities	Belongs to the DHOase family. Hydantoinase/dihydropyrimidinase subfamily.
Post-translational modifications	Phosphorylated upon DNA damage, probably by ATM or ATR.
Cellular localization	Cytoplasm.

Images



12.5% SDS-PAGE analysis of ab132425 stained with Coomassie Blue.

Please note: All products are "FOR RESEARCH USE ONLY. NOT FOR USE IN DIAGNOSTIC PROCEDURES"

Our Abpromise to you: Quality guaranteed and expert technical support

- Replacement or refund for products not performing as stated on the datasheet
- Valid for 12 months from date of delivery

- Response to your inquiry within 24 hours
- We provide support in Chinese, English, French, German, Japanese and Spanish
- Extensive multi-media technical resources to help you
- We investigate all quality concerns to ensure our products perform to the highest standards

If the product does not perform as described on this datasheet, we will offer a refund or replacement. For full details of the Abpromise, please visit <https://www.abcam.com/abpromise> or contact our technical team.

Terms and conditions

- Guarantee only valid for products bought direct from Abcam or one of our authorized distributors