

Product datasheet

Recombinant Human CRTAM protein ab163368

1 Image

Overview

Product name	Recombinant Human CRTAM protein
Protein length	Full length protein

Description

Nature	Recombinant
Source	Wheat germ
Amino Acid Sequence	
Species	Human
Sequence	<p>MWWRVLSLLAWFPLQEASLTNHTETITVEEGQTLTLK CVTSLRKNSLQW LTPSGFTIFLNEYVPLKNSKYQLLHHSANQLSITVPNVTL QDEGVYKCLH YSDSVSTKEVKVMLATPFKPILEASVIRKQNGEEHVVL MCSTMRSKPPP QITWLLGNSMEVSGGTLHEFETDGKKCNTTSTLIIHTYG KNSTVDCIIRH RGLQGRKLVAPFRFEDLVTDEETASDALERNLSSQD PQQPTSTVSVTED SSTSEIDKEEKEQTTQDPDLTTEANPQYLGLARKKSGI LLLTLVSFLIFI LFIVQLFIMKLRKTHVWKKENEVSEHTLESYRSRSNNE ETSSEEKNGQ SSHPMRCMNYTKLYSEGKTKRKENVQHSKLEEKHIQV PESV</p>
Amino acids	1 to 393
Tags	proprietary tag N-Terminus

Specifications

Our [Abpromise guarantee](#) covers the use of **ab163368** in the following tested applications.

The application notes include recommended starting dilutions; optimal dilutions/concentrations should be determined by the end user.

Applications	Western blot
---------------------	--------------

	ELISA
Form	Liquid
Additional notes	Protein concentration is above or equal to 0.05 mg/ml.

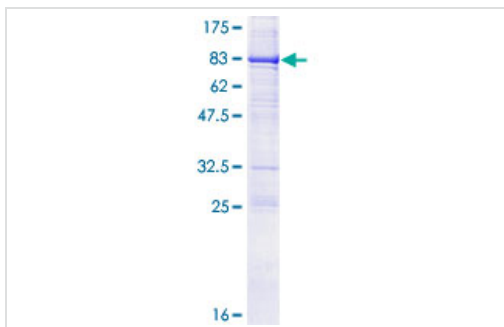
Preparation and Storage

Stability and Storage	Shipped on dry ice. Upon delivery aliquot and store at -80°C. Avoid freeze / thaw cycles. pH: 8.00 Constituents: 0.31% Glutathione, 0.79% Tris HCl
------------------------------	--

General Info

Function	Interaction with CADM1 promotes natural killer (NK) cell cytotoxicity and interferon-gamma (IFN-gamma) secretion by CD8+ cells in vitro as well as NK cell-mediated rejection of tumors expressing CADM3 in vivo.
Tissue specificity	In the immune system, expression is restricted to activated class-I MHC-restricted cells, including NKT and CD8 cells. Strongly expressed in spleen, thymus, small intestine, peripheral blood leukocyte, and in Purkinje neurons in cerebellum. Expressed at much lower levels in testis, ovary, colon, lung and lymphoid tissues.
Sequence similarities	Belongs to the nectin family. Contains 1 Ig-like C2-type (immunoglobulin-like) domain. Contains 1 Ig-like V-type (immunoglobulin-like) domain.
Cellular localization	Membrane.

Images



ab163368 on a 12.5% SDS-PAGE stained with Coomassie Blue.

SDS-PAGE - Recombinant Human CRTAM protein
(ab163368)

Please note: All products are "FOR RESEARCH USE ONLY AND ARE NOT INTENDED FOR DIAGNOSTIC OR THERAPEUTIC USE"

Our Abpromise to you: Quality guaranteed and expert technical support

- Replacement or refund for products not performing as stated on the datasheet

- Valid for 12 months from date of delivery
- Response to your inquiry within 24 hours

- We provide support in Chinese, English, French, German, Japanese and Spanish
- Extensive multi-media technical resources to help you
- We investigate all quality concerns to ensure our products perform to the highest standards

If the product does not perform as described on this datasheet, we will offer a refund or replacement. For full details of the Abpromise, please visit <https://www.abcam.com/abpromise> or contact our technical team.

Terms and conditions

- Guarantee only valid for products bought direct from Abcam or one of our authorized distributors