

## Product datasheet

# Recombinant Human CRYBB3 protein ab158206

1 Image

### Overview

<b>Product name</b>	Recombinant Human CRYBB3 protein
<b>Protein length</b>	Protein fragment

### Description

<b>Nature</b>	Recombinant
<b>Source</b>	Wheat germ
<b>Amino Acid Sequence</b>	
<b>Species</b>	Human
<b>Sequence</b>	PHHKLHLFENPAFSGRKMEVDDDVPSLWAHGFQDR VASVRAINGTWVGY EFGYRGRQYVFERGEYRHWNEWNASQPQLQSVRRIR RDQKWHKRGRFPSS
<b>Amino acids</b>	112 to 211
<b>Tags</b>	proprietary tag N-Terminus

### Specifications

Our [Abpromise guarantee](#) covers the use of **ab158206** in the following tested applications.

The application notes include recommended starting dilutions; optimal dilutions/concentrations should be determined by the end user.

<b>Applications</b>	ELISA Western blot
<b>Form</b>	Liquid
<b>Additional notes</b>	Protein concentration is above or equal to 0.05 mg/ml.

### Preparation and Storage

<b>Stability and Storage</b>	Shipped on dry ice. Upon delivery aliquot and store at -80°C. Avoid freeze / thaw cycles. pH: 8.00 Constituents: 0.31% Glutathione, 0.79% Tris HCl
------------------------------	--

## General Info

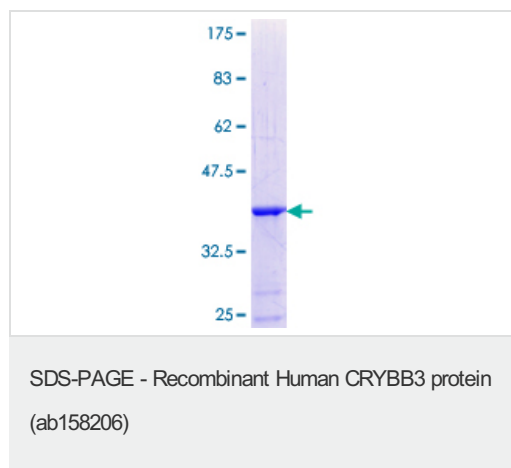
---

<b>Function</b>	Crystallins are the dominant structural components of the vertebrate eye lens.
<b>Involvement in disease</b>	Defects in CRYBB3 are the cause of cataract congenital nuclear autosomal recessive type 2 (CATCN2) [MIM:609741]. A congenital cataract affecting the central nucleus of the eye. Nuclear cataracts are often not highly visually significant. The density of the opacities varies greatly from fine dots to a dense, white and chalk-like, central cataract. The condition is usually bilateral. Nuclear cataracts are often combined with opacified cortical fibers encircling the nuclear opacity, which are referred to as cortical riders.
<b>Sequence similarities</b>	Belongs to the beta/gamma-crystallin family. Contains 4 beta/gamma crystallin 'Greek key' domains.
<b>Domain</b>	Has a two-domain beta-structure, folded into four very similar Greek key motifs.

---

## Images

---



ab158206 on a 12.5% SDS-PAGE stained with Coomassie Blue.

**Please note:** All products are "FOR RESEARCH USE ONLY AND ARE NOT INTENDED FOR DIAGNOSTIC OR THERAPEUTIC USE"

## Our Abpromise to you: Quality guaranteed and expert technical support

---

- Replacement or refund for products not performing as stated on the datasheet
- Valid for 12 months from date of delivery
- Response to your inquiry within 24 hours
- We provide support in Chinese, English, French, German, Japanese and Spanish
- Extensive multi-media technical resources to help you
- We investigate all quality concerns to ensure our products perform to the highest standards

If the product does not perform as described on this datasheet, we will offer a refund or replacement. For full details of the Abpromise, please visit <https://www.abcam.com/abpromise> or contact our technical team.

## Terms and conditions

---

- Guarantee only valid for products bought direct from Abcam or one of our authorized distributors